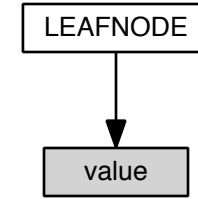
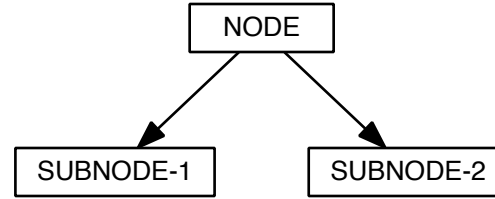
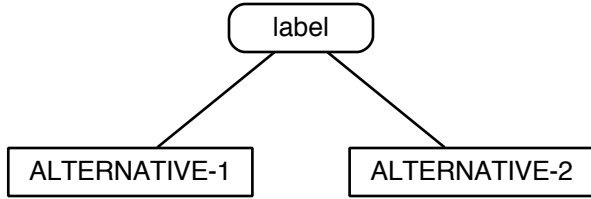
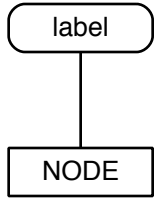


M2C Modula-2 Compiler & Translator

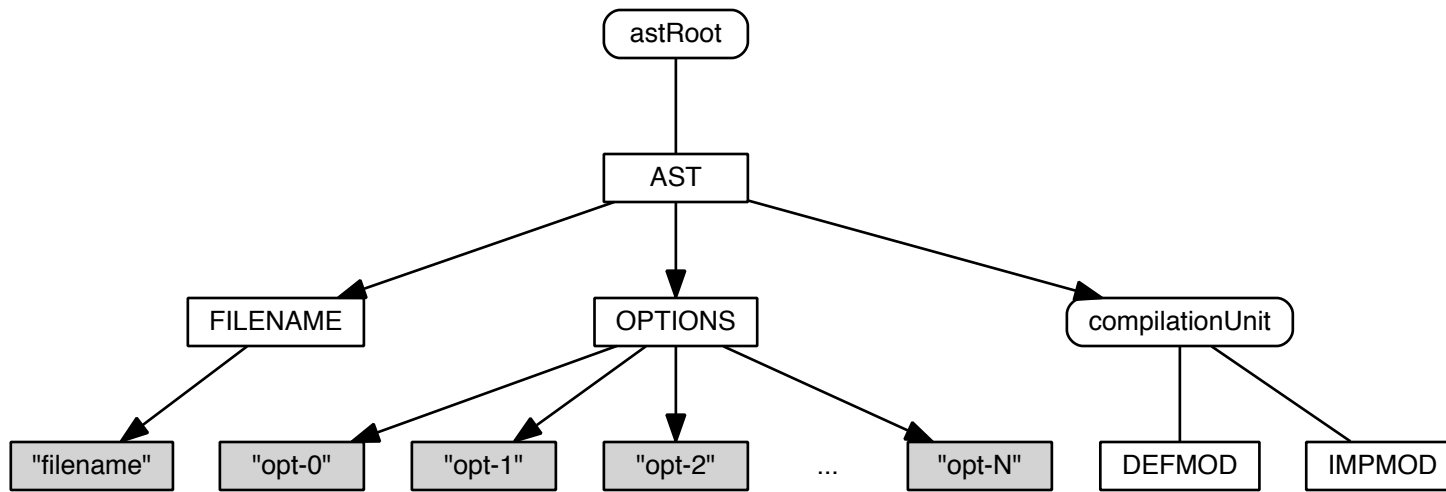
## Abstract Syntax Tree Node Diagrams

Version 1.04 -- January 12, 2016

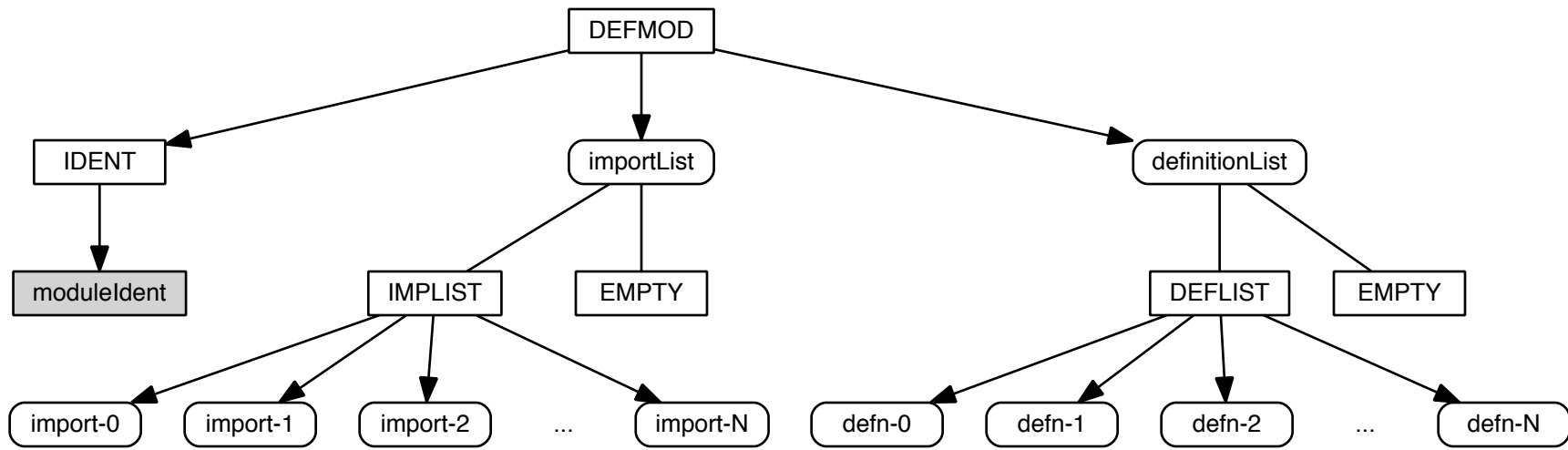
# Legend



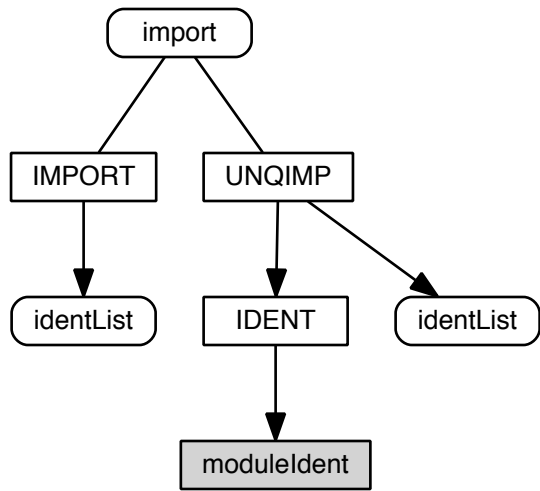
# AST Root Node



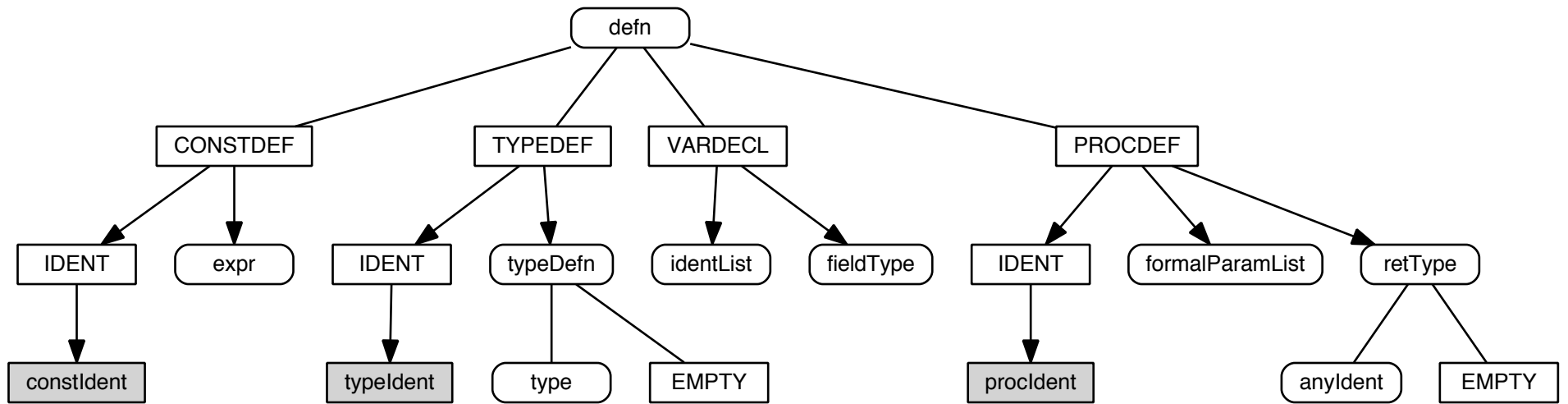
# Definition Module Node



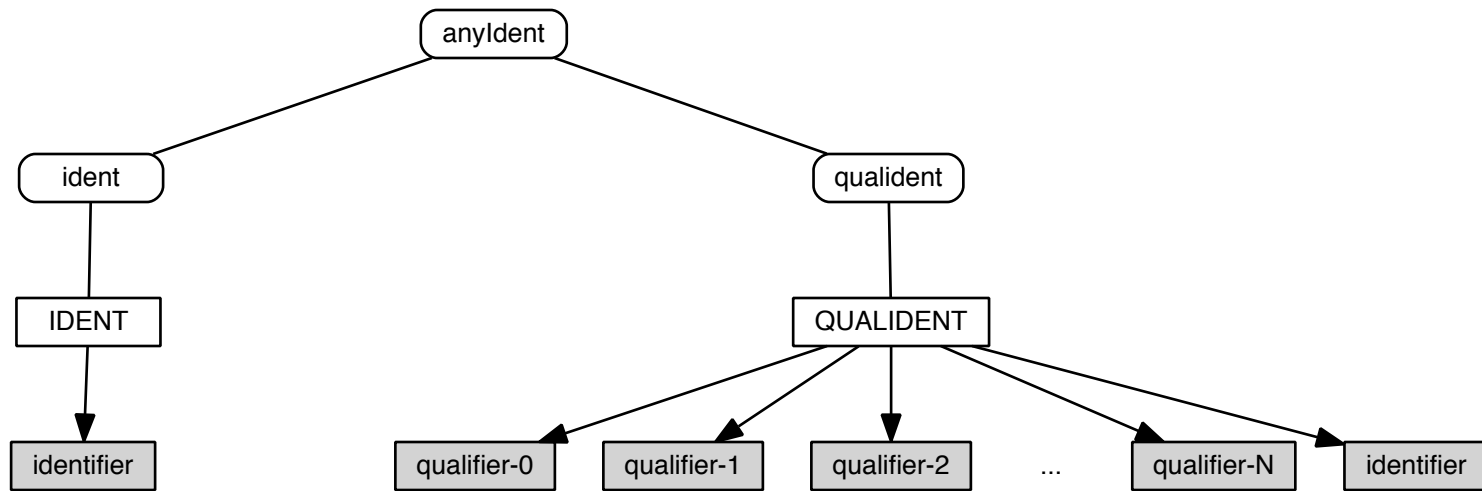
## Import Nodes



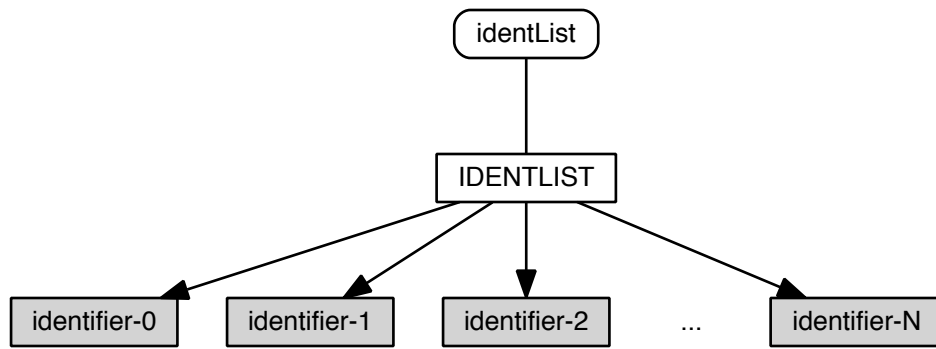
# Definition Nodes



## Identifier and Qualified Identifier Nodes

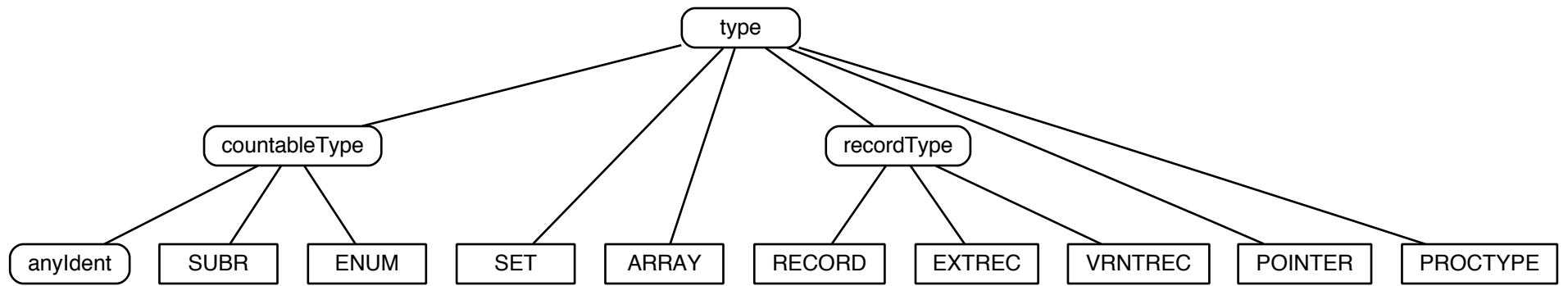


## Identifier List Node

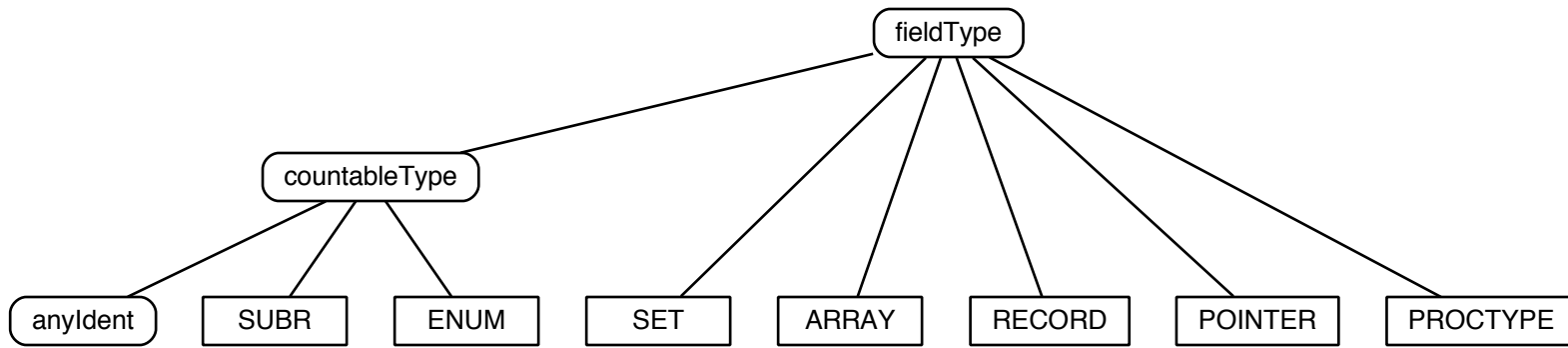




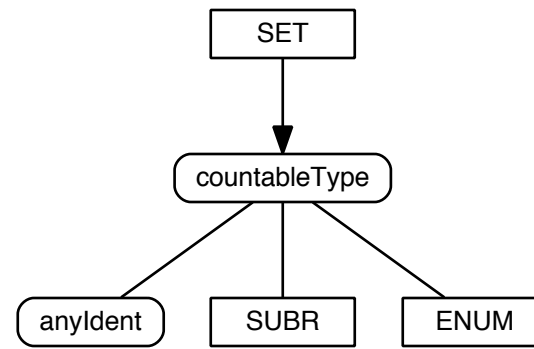
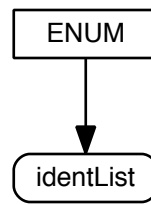
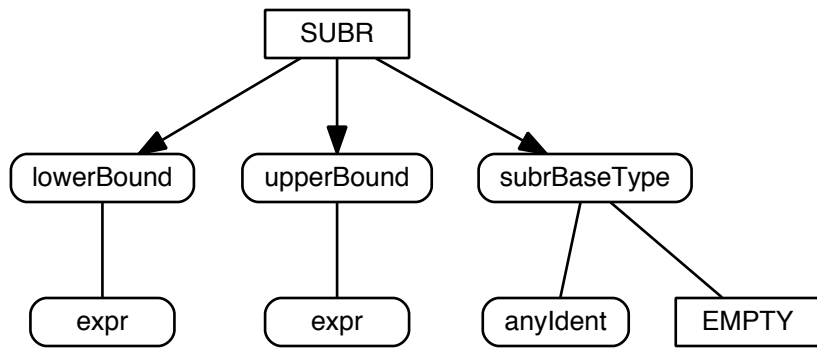
## Type Nodes



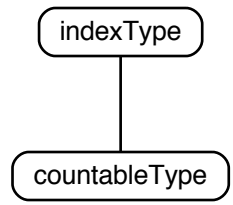
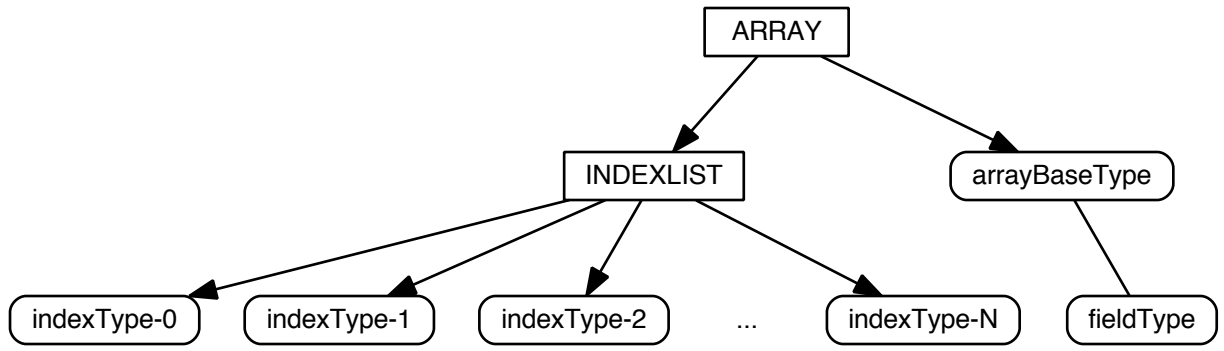
## Field Type Nodes



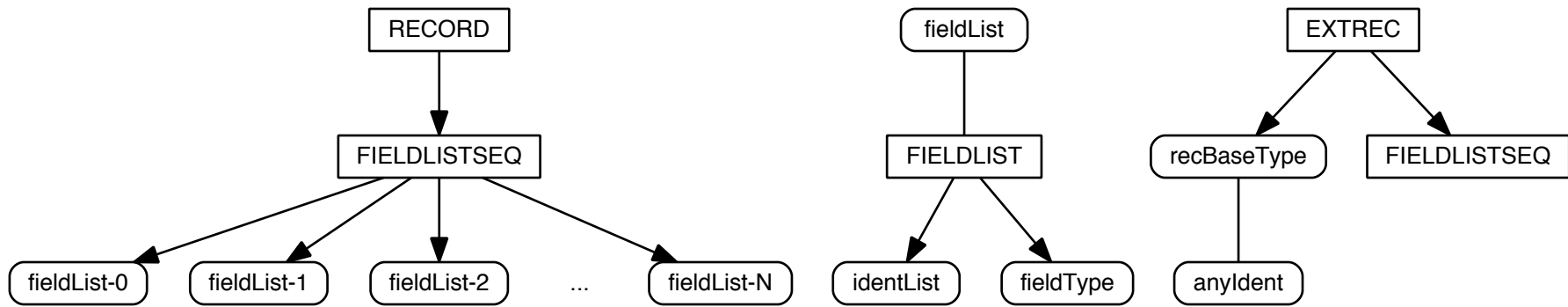
# Subrange, Enumeration and Set Type Nodes



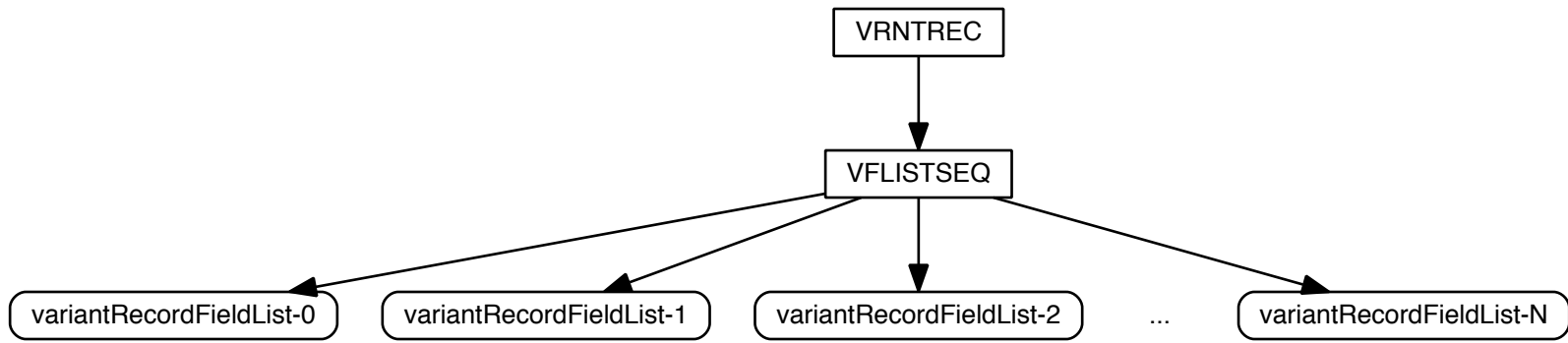
# Array Type Node



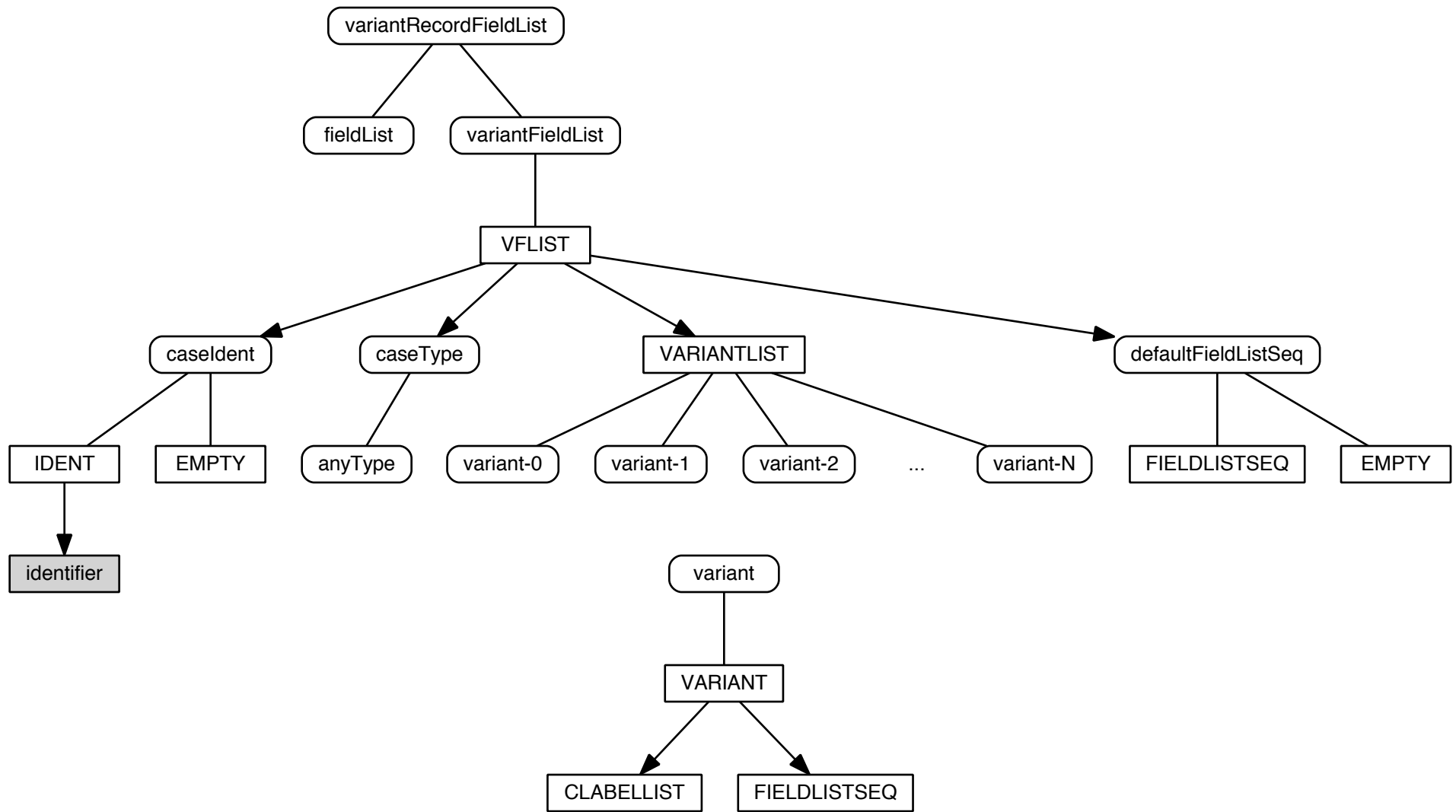
# Simple and Extensible Record Type Nodes



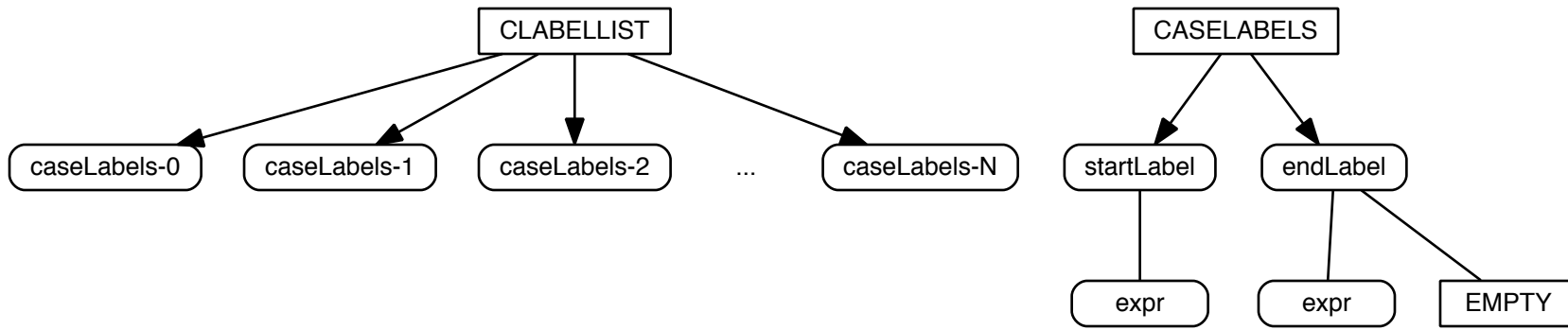
# Variant Record Type Node



# Variant Record Field List Node

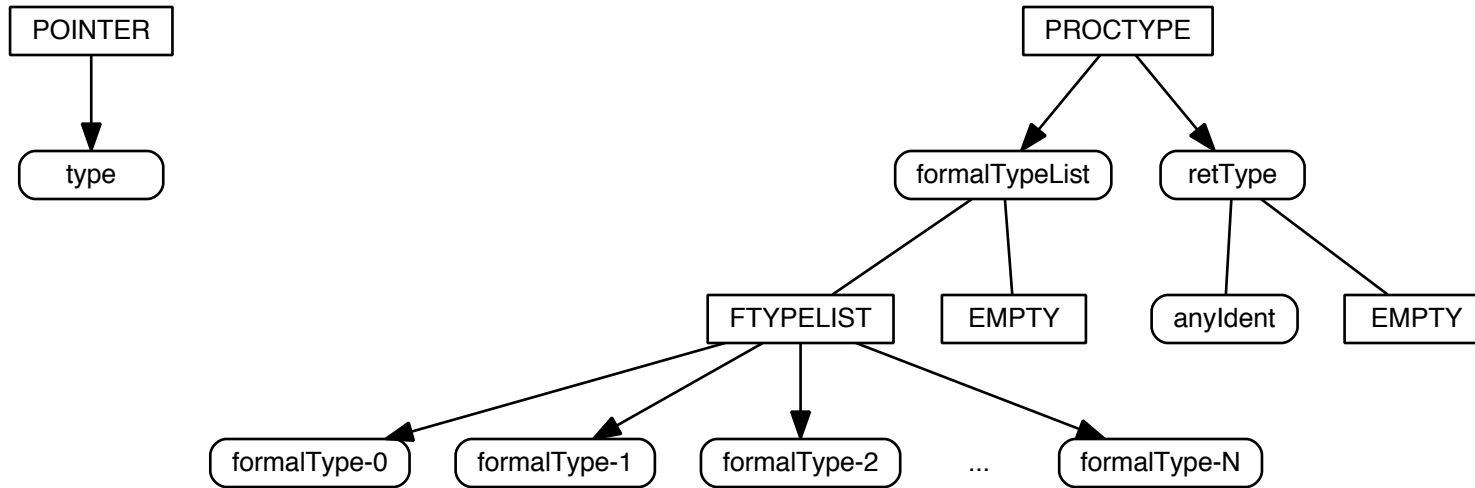


# Case Label List Node

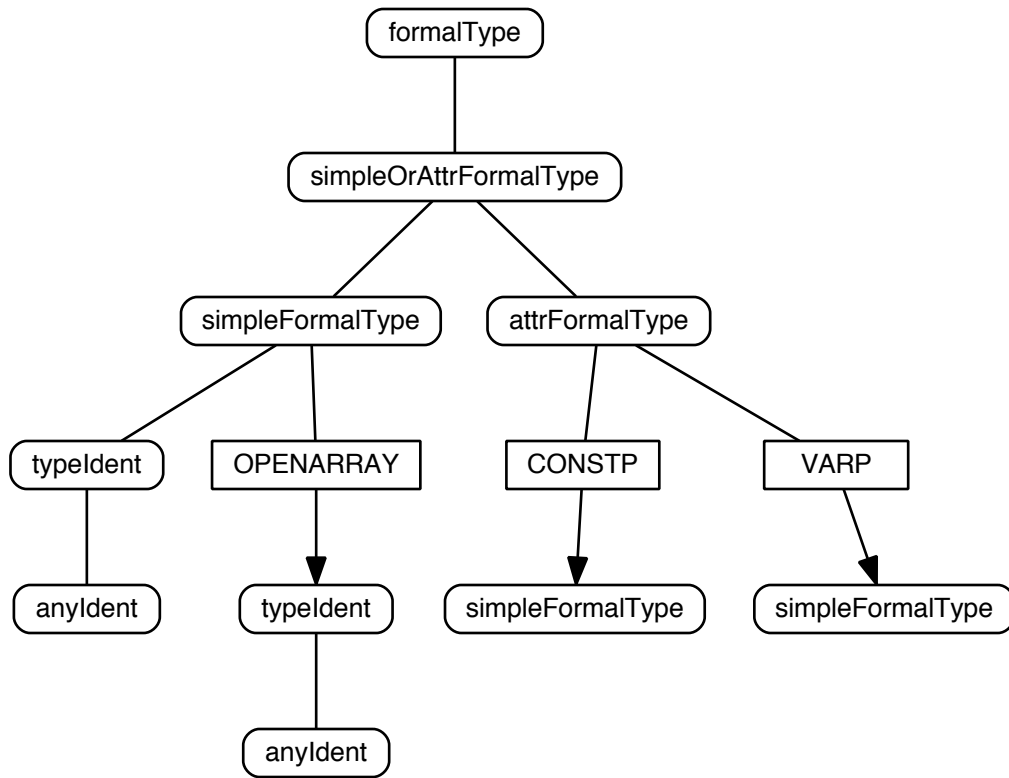




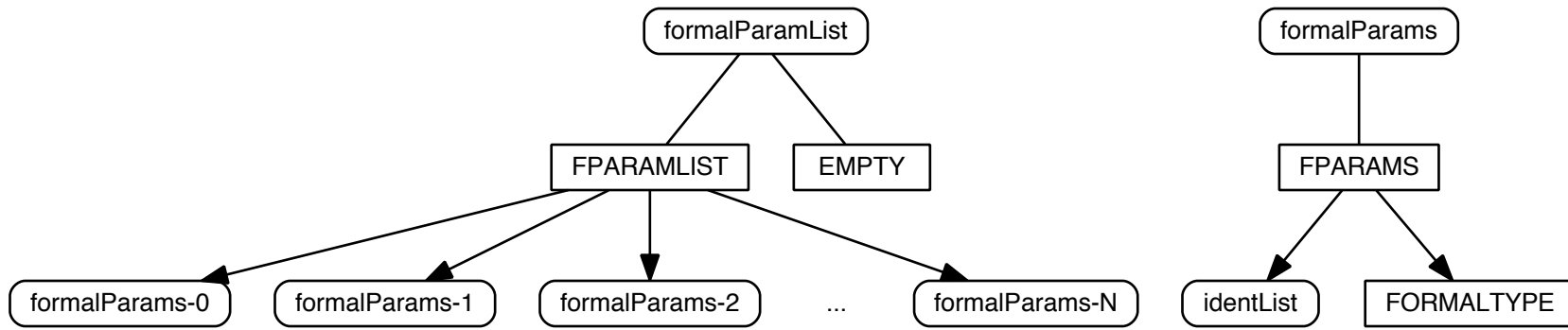
# Pointer and Procedure Type Nodes



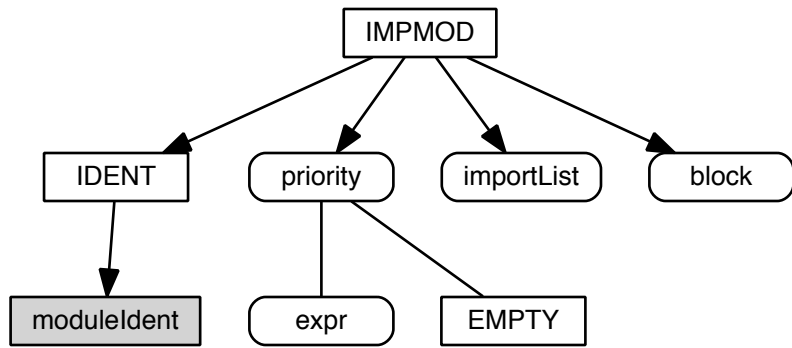
# Formal Type Node



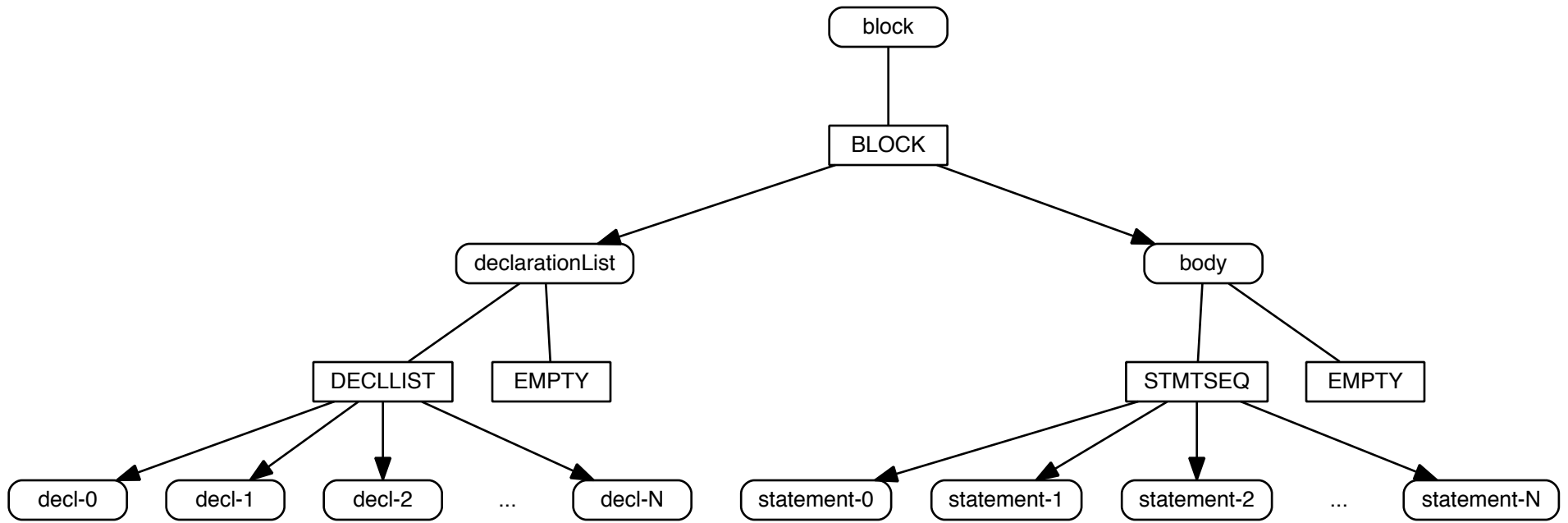
# Formal Parameter List Node



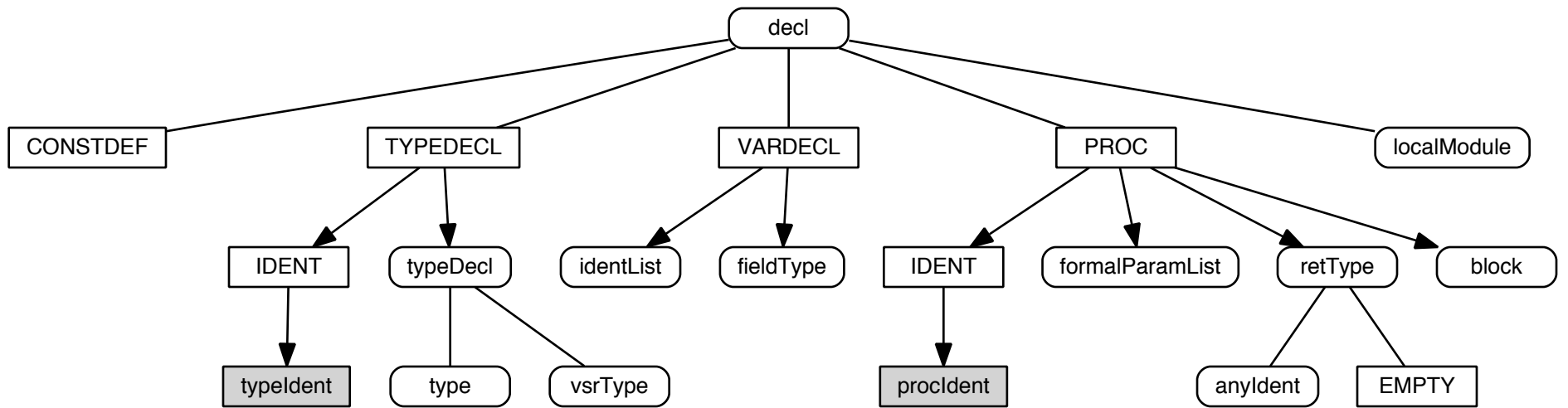
## Program or Implementation Module Node



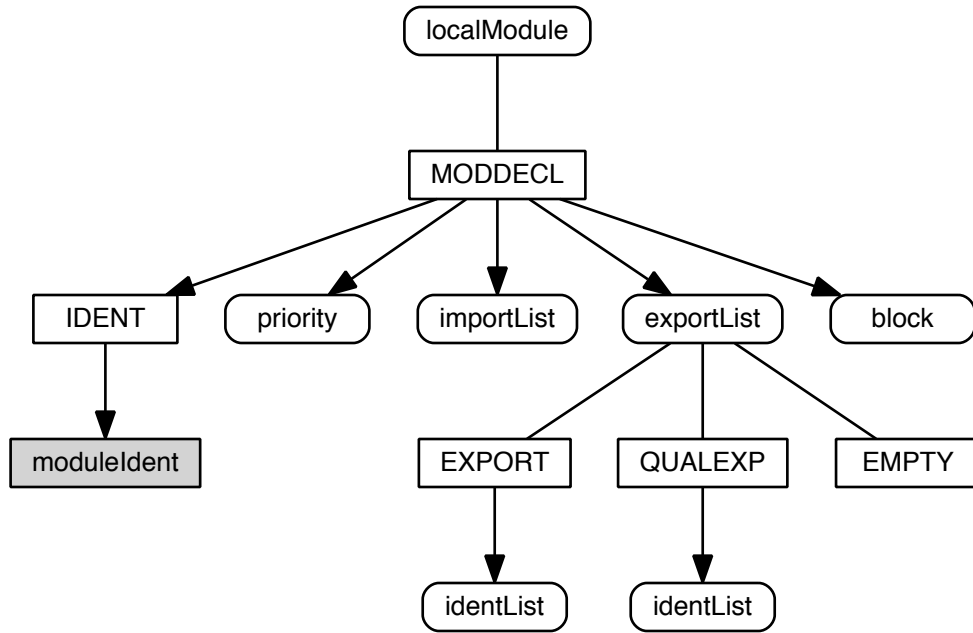
# Block Node



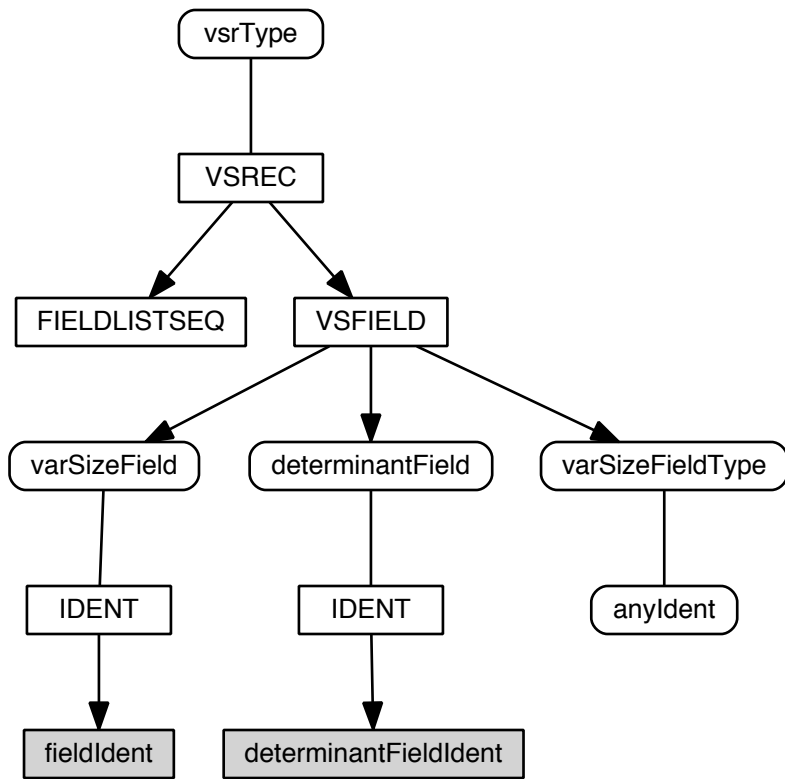
# Declaration Nodes



# Local Module Declaration Node

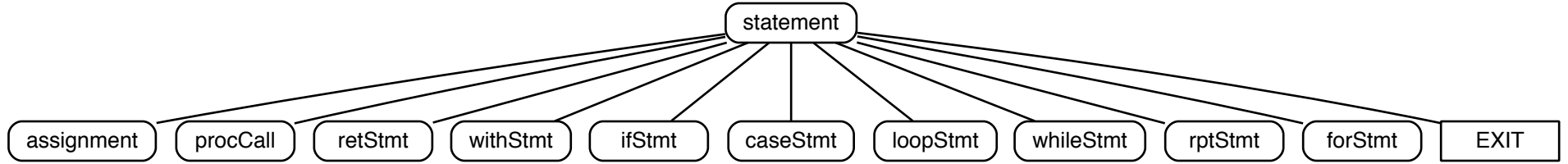


# Variable Size Record Type Declaration Node

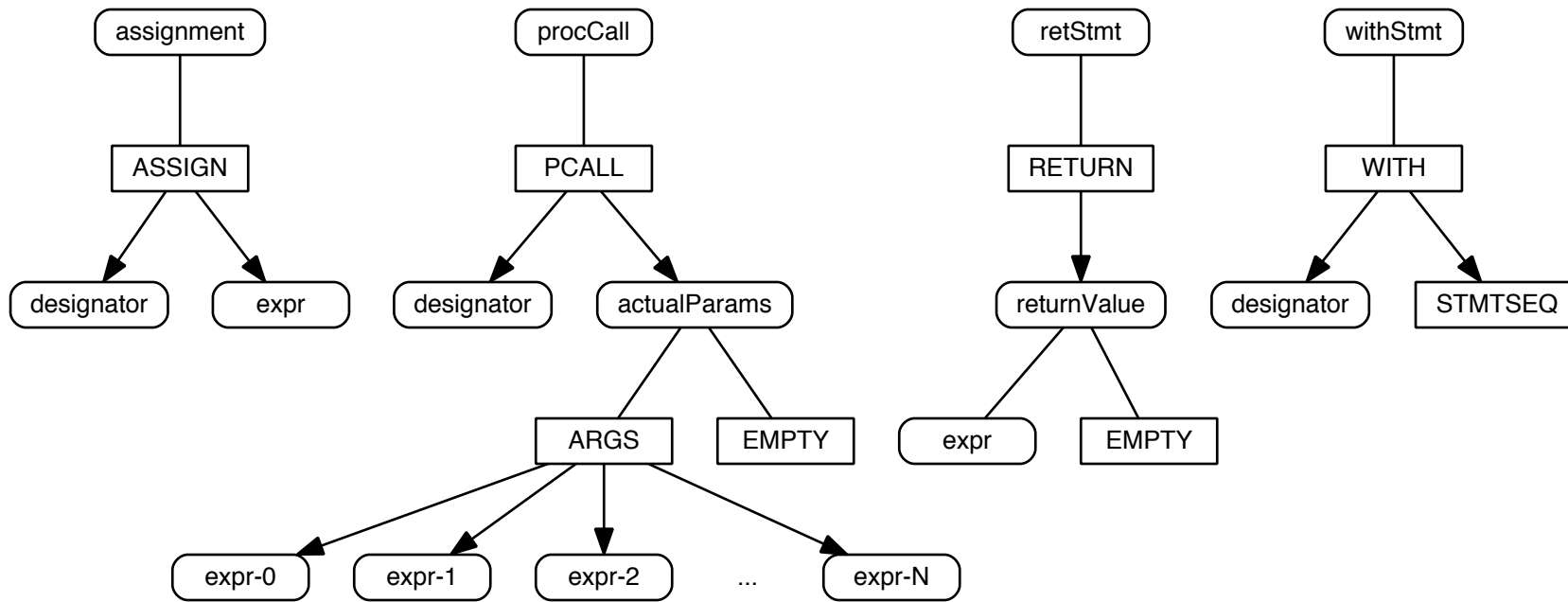




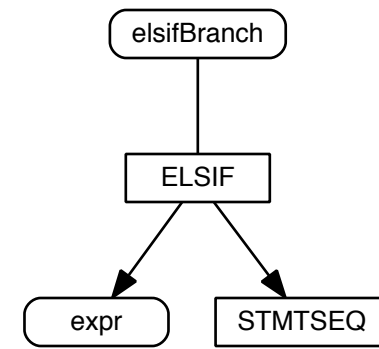
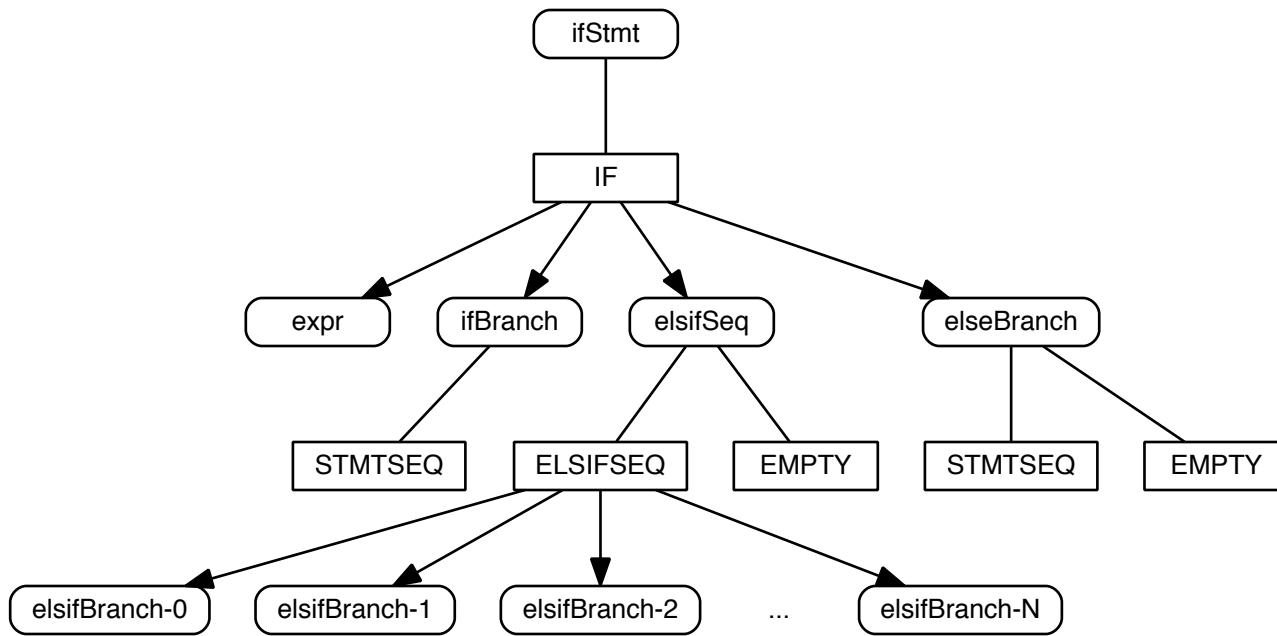
# Statement Nodes



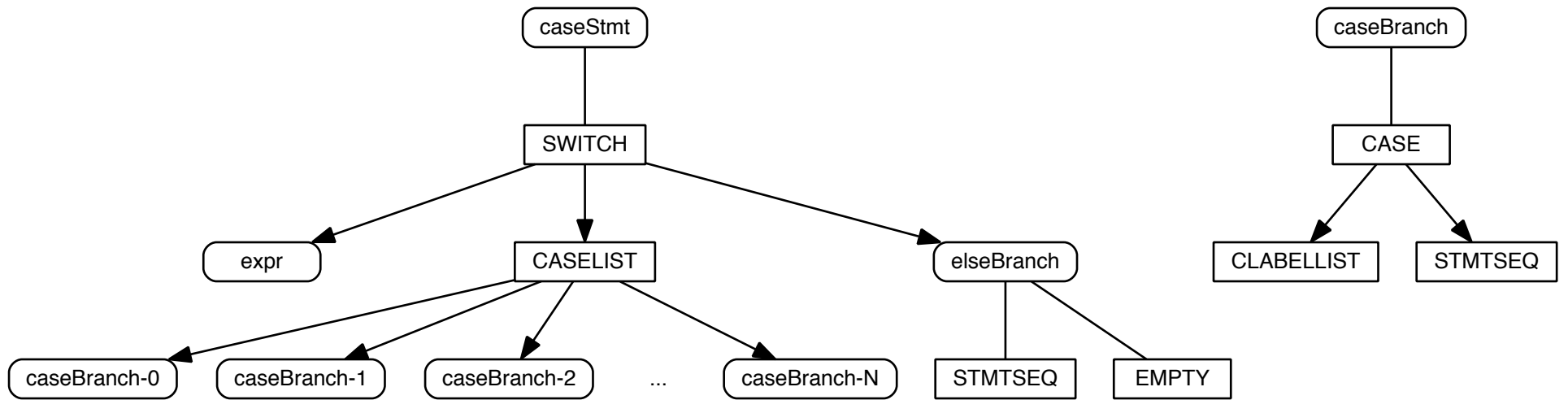
# Assignment, Procedure Call, Return and With Statement Nodes



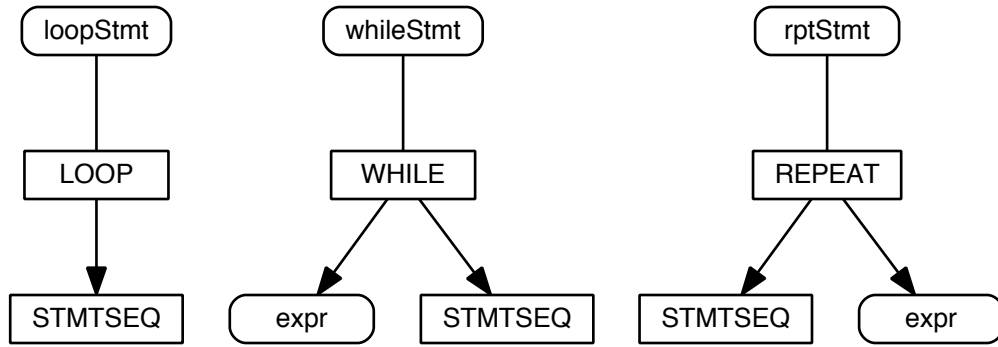
# If Statement Node



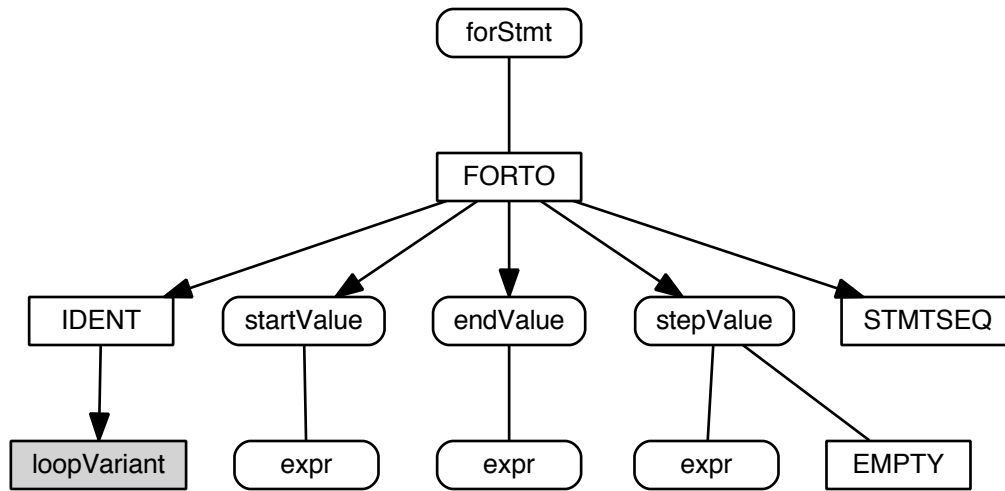
# Case Statement Node



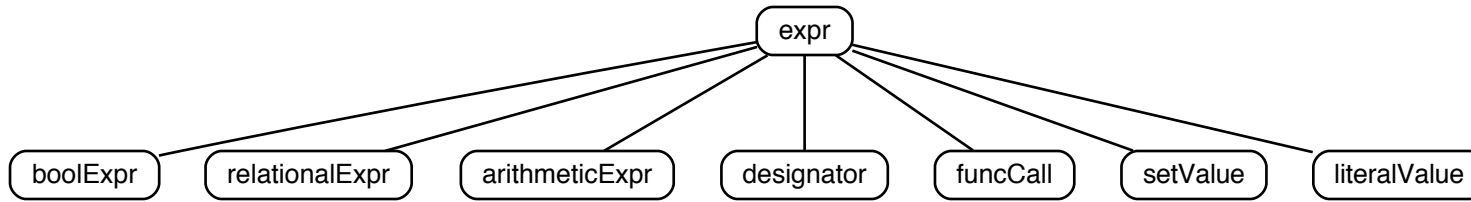
# Loop, While and Repeat Statement Nodes



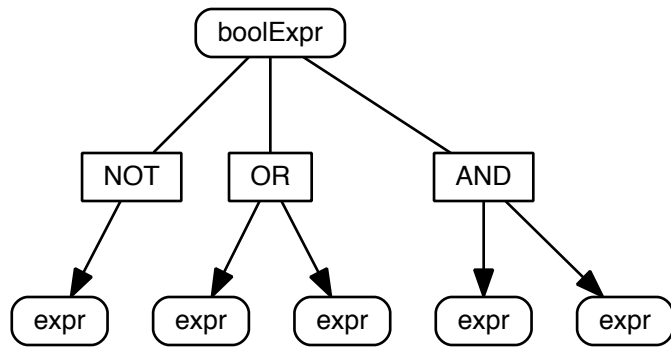
# For Statement Node



## Expression Nodes

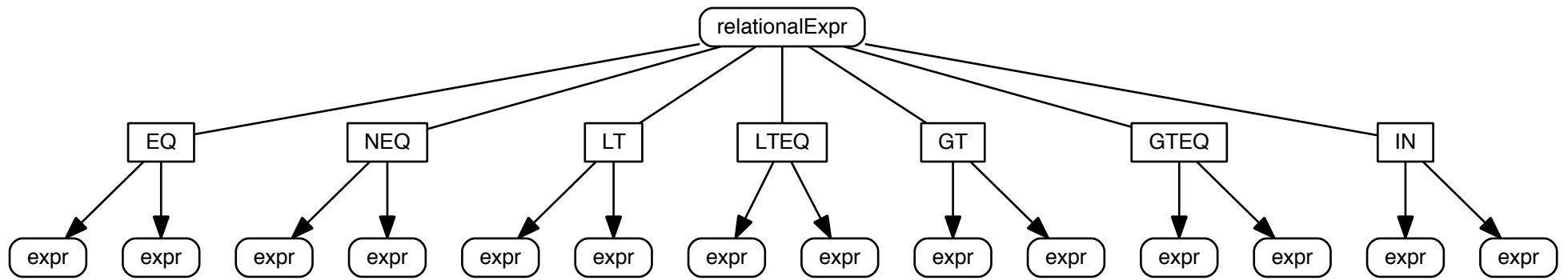


## Boolean Operation Expression Nodes

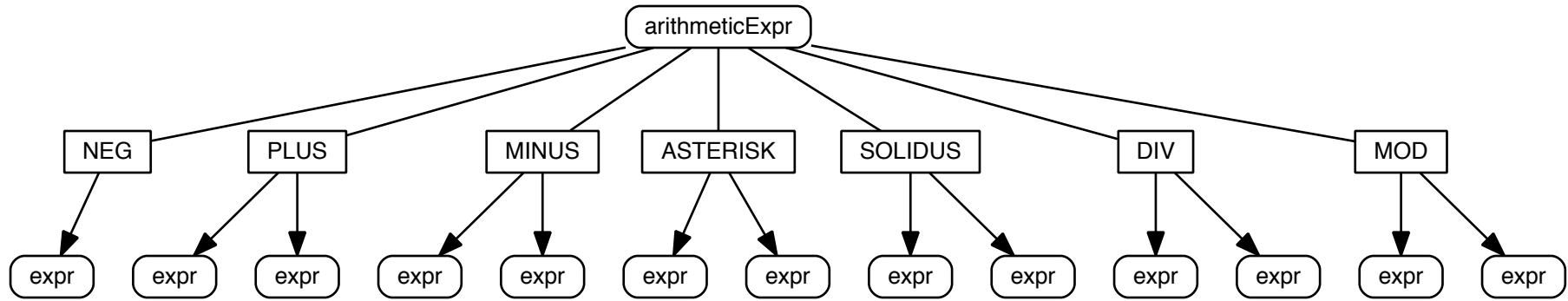




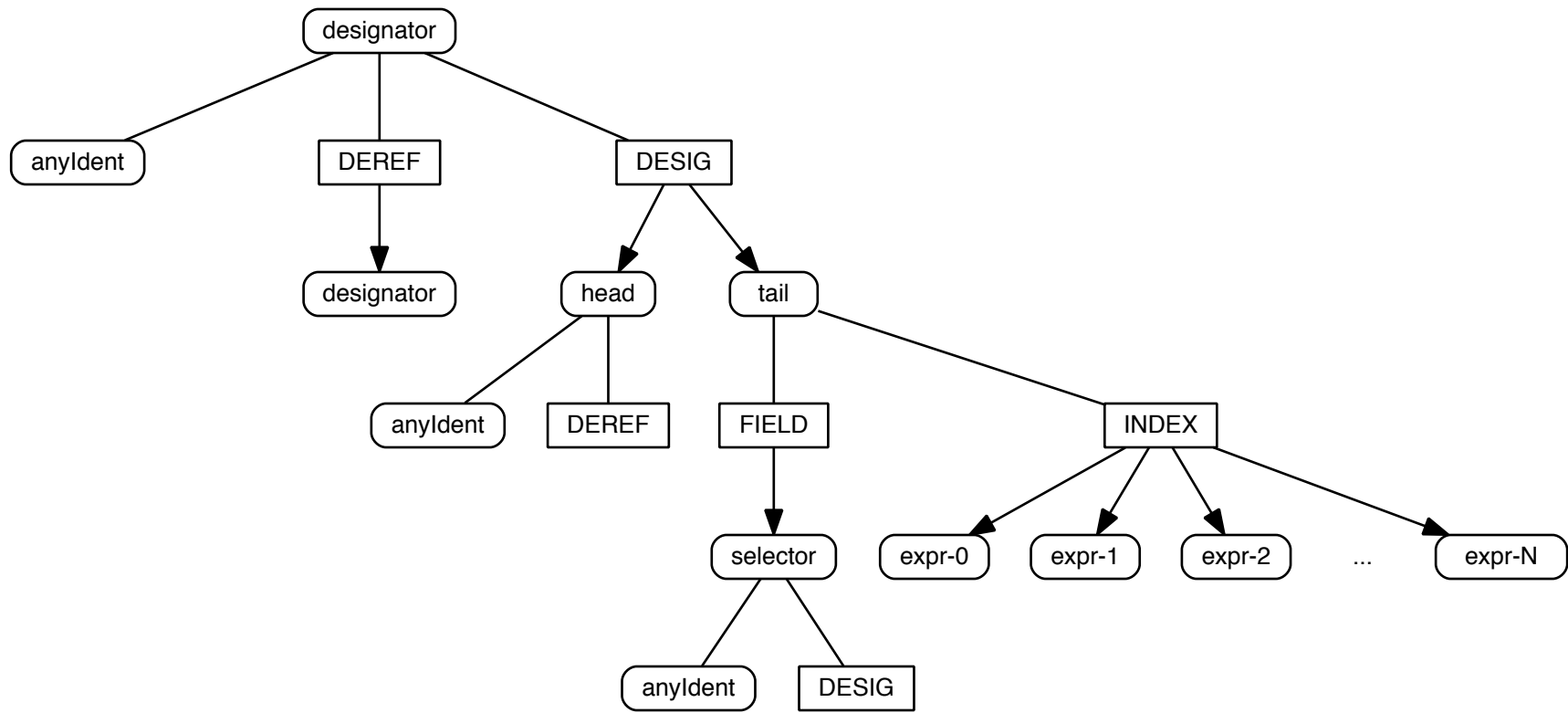
# Relational Operation Expression Nodes



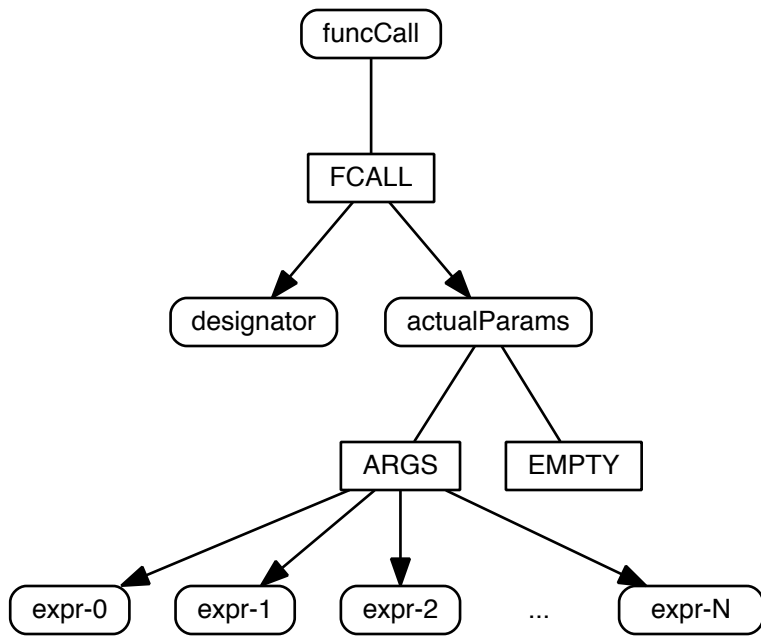
# Arithmetic Operation Expression Nodes



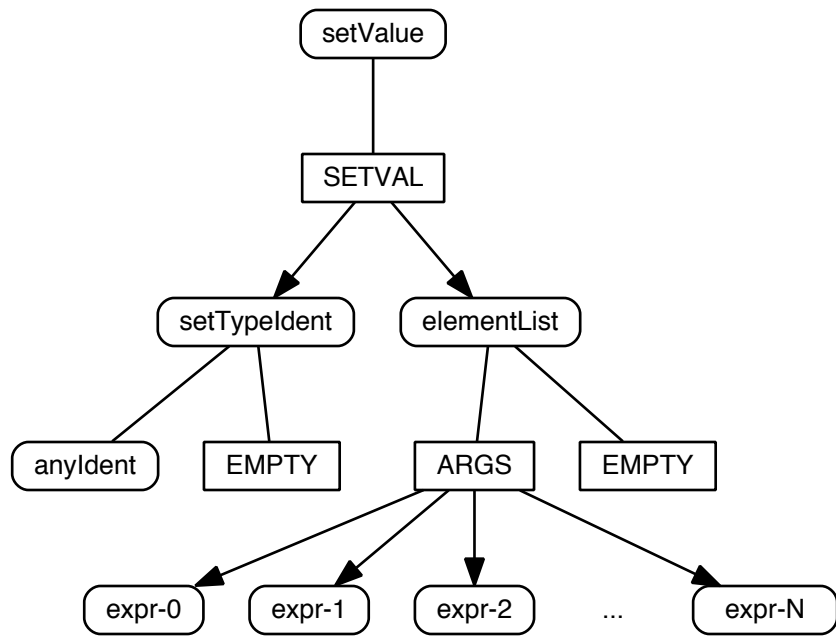
# Designator Nodes



# Function Call Node



## Set Value Node



## Literal Value Nodes

