

YuniControl

Universal remote control

Jaroslav Páral

Available controls



Chlazení silového bloku

Ventilátor topení

Osvětlení interiéru

Přepínání transparentů

ŠKODA 15 Tr 17/6M e.č. 3516

Signalizace: 'ZASTAVÍME'

Klakson

Osvětlení kabiny

Stěrače

Světla: potkávací, dálková, obrysová

Blinkry: levý, pravý, výstražný

Mlhová světla

Dveře 1,2,3

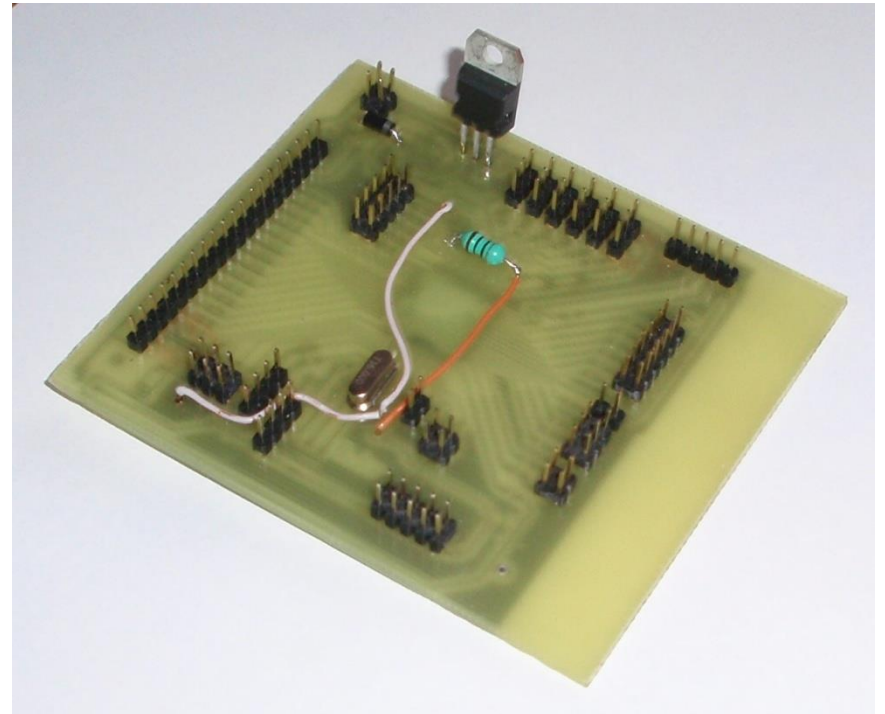
Řízení: plyn, brzda, zatáčení

Dveře řidič



OWN
CONTROL

First generation



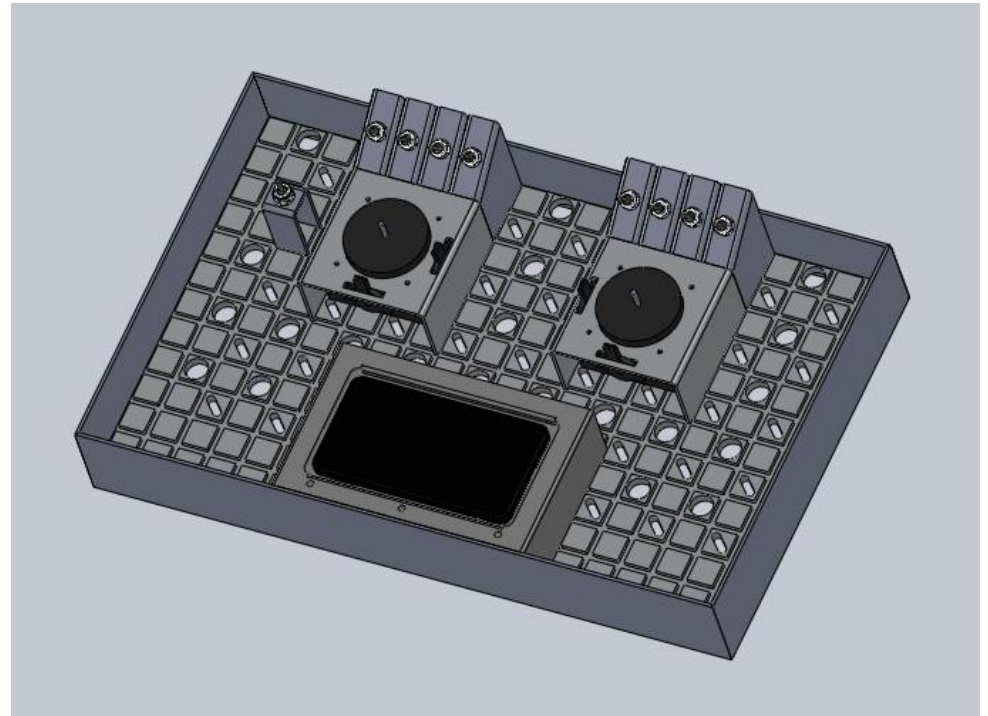
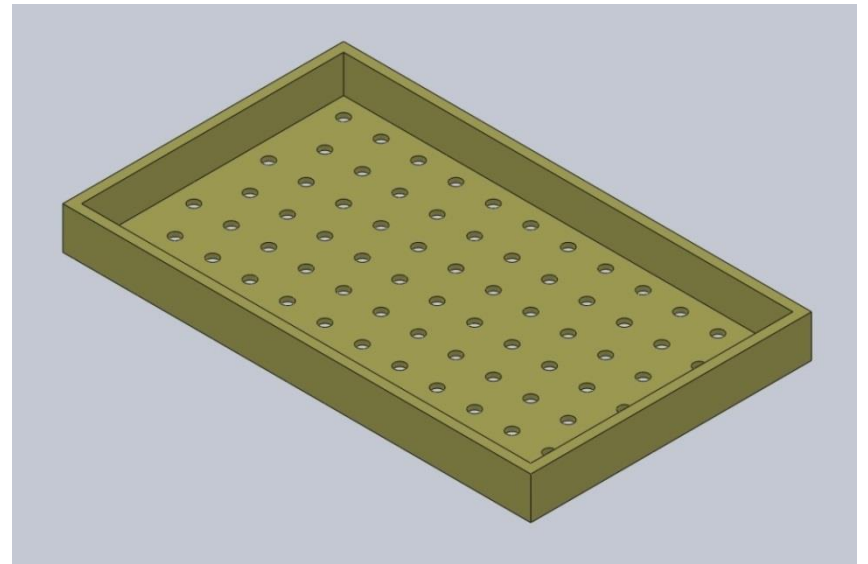
Second generation



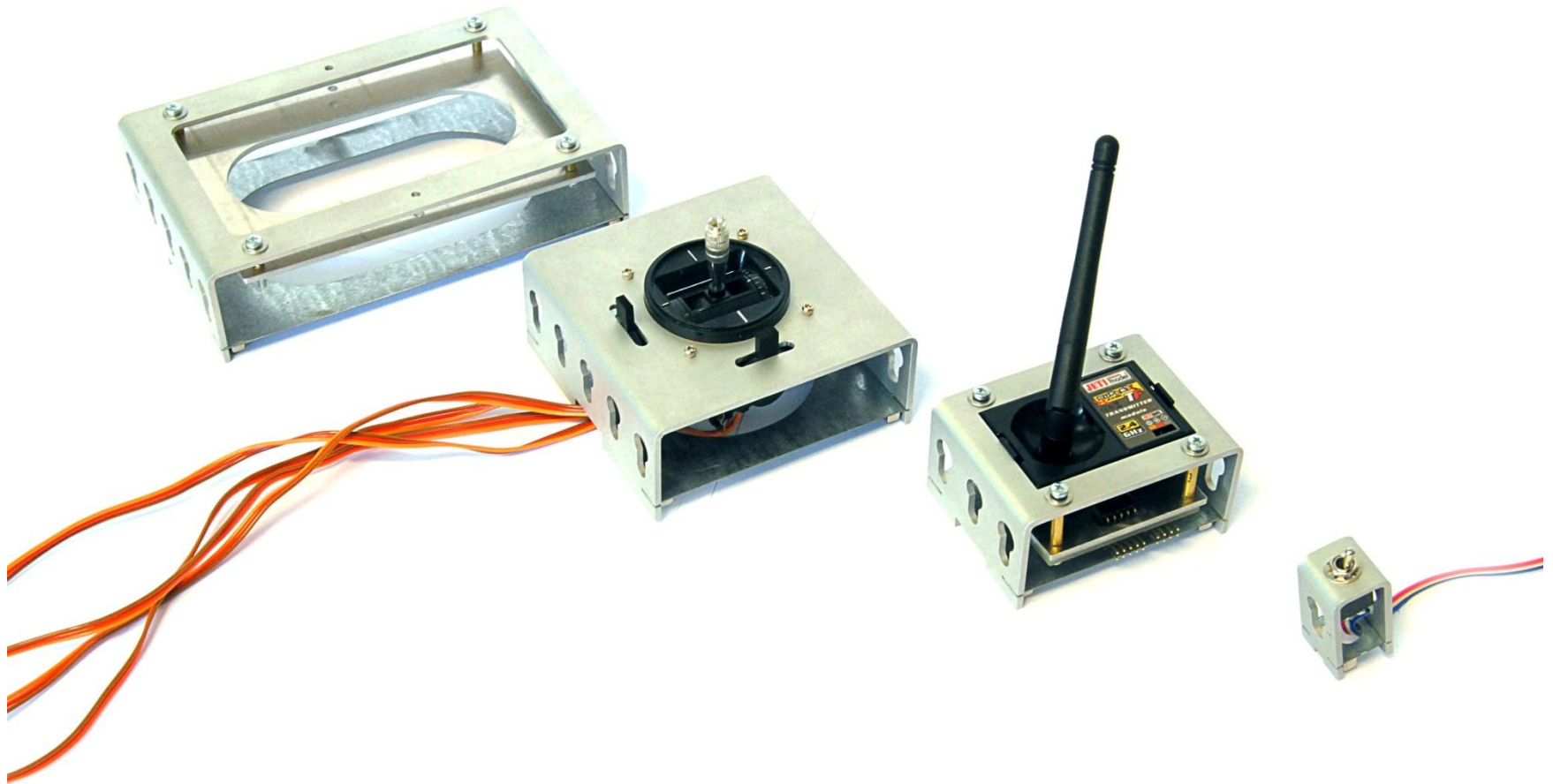
Construction

Mounting modules:

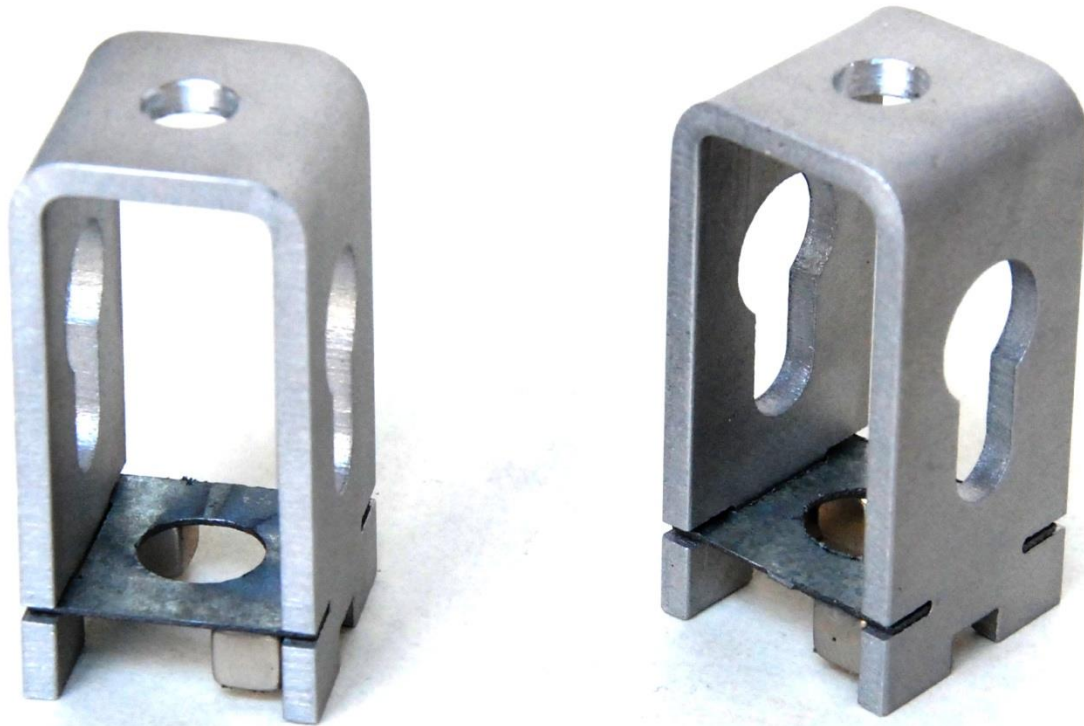
- milled grooves
- hollow screws
- magnets



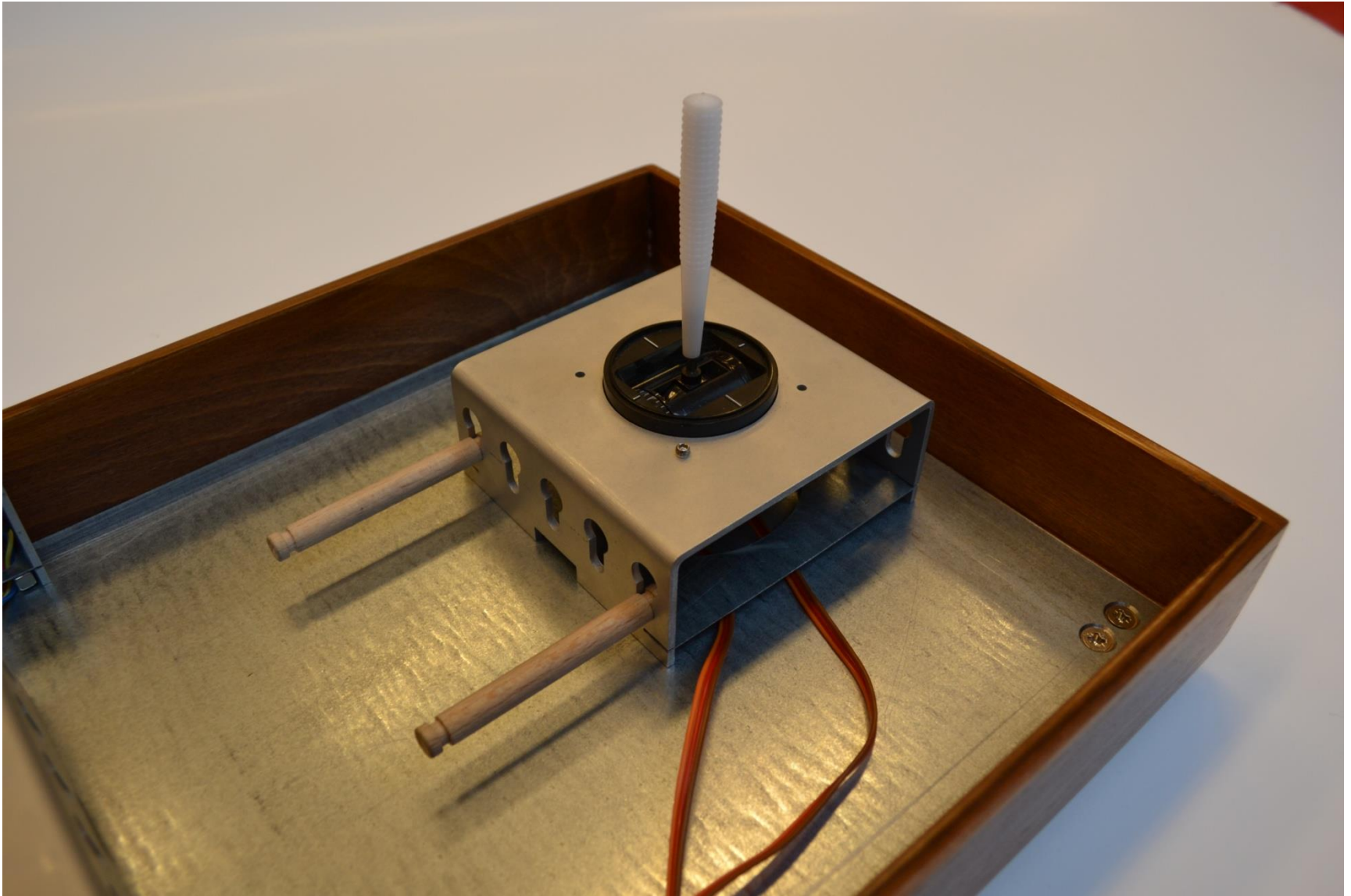
Moduls



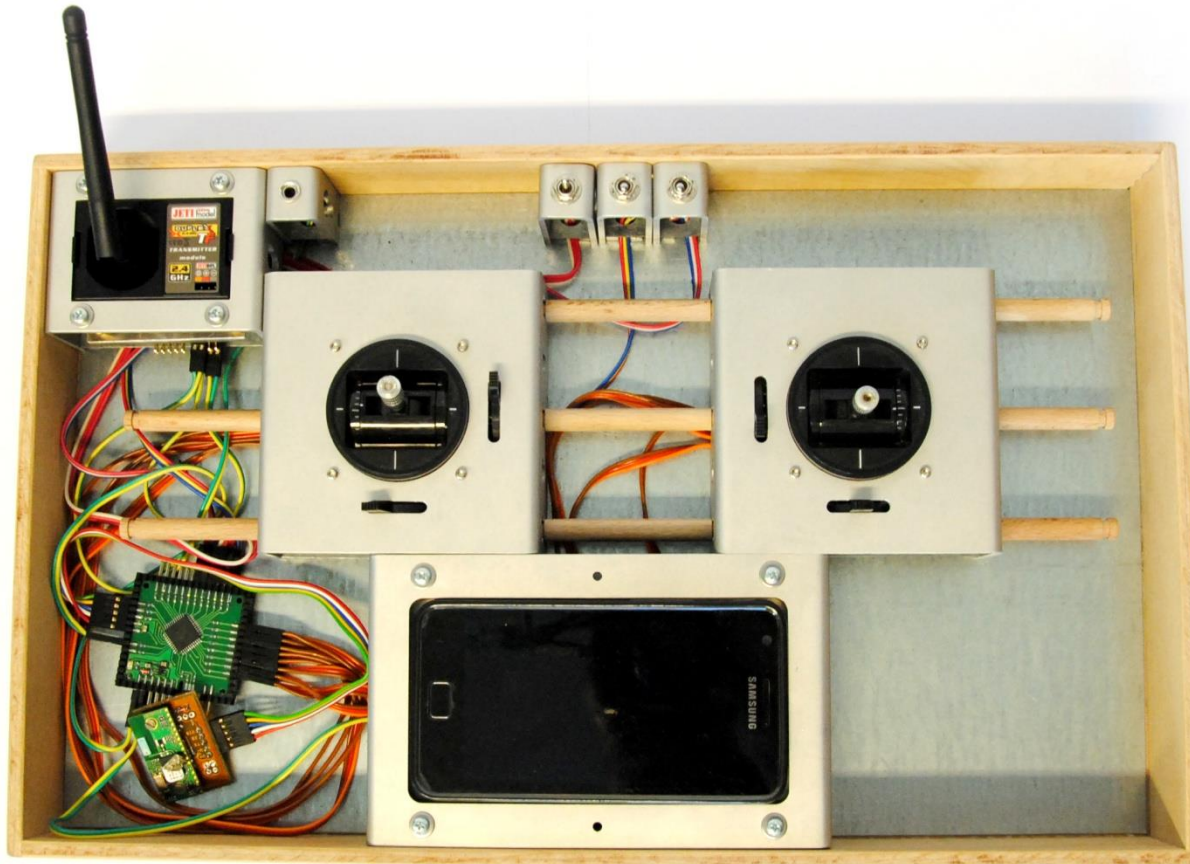
Solution construction (1)



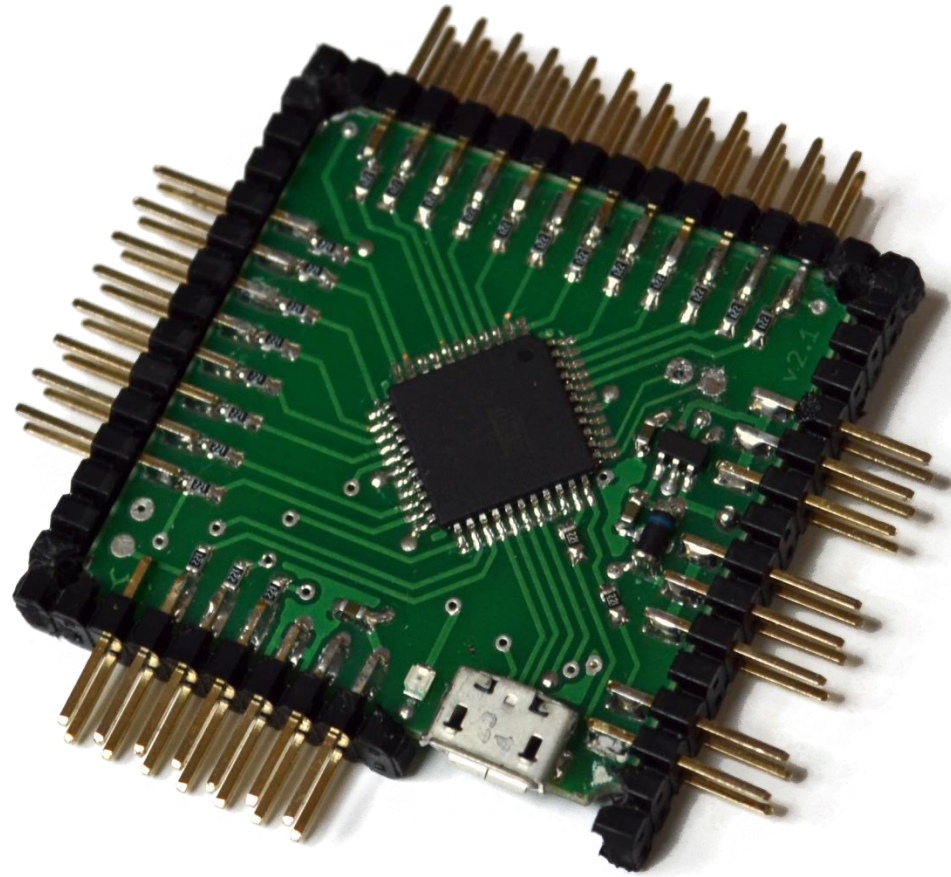
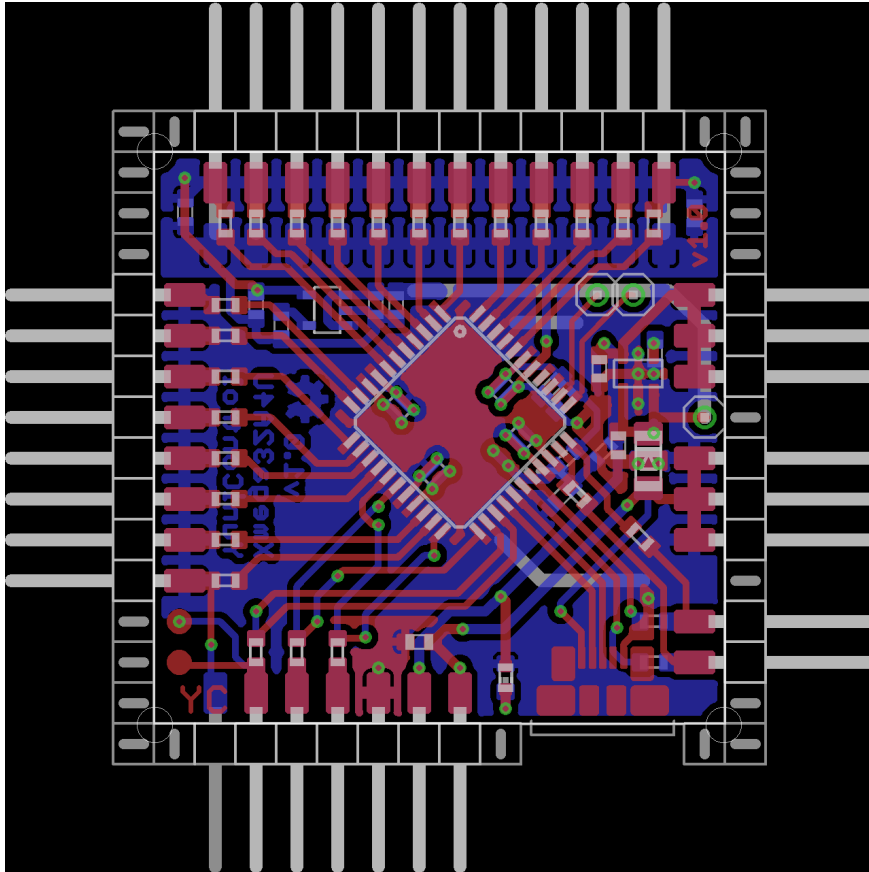
Solution construction (2)



Solution construction (3)



Control electronics



Different configuration (1)

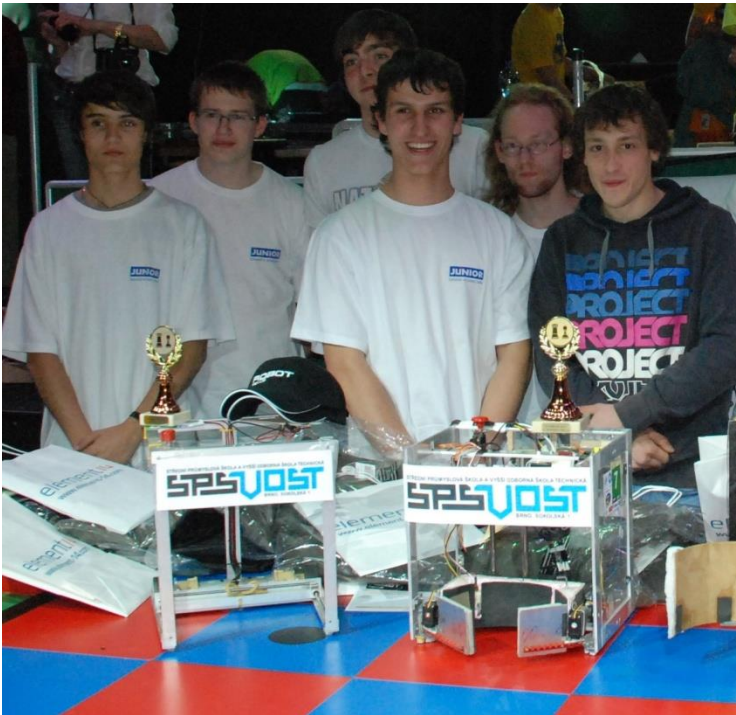


Different configuration (2)



Achievement

- Eurobot Starter 2011 – 1. place in national competition



Show and utilize



Results

- suitable for special applications
- great customization options
- opportunity of trying new ways of control (future studies)

Thank you for your attention



Jihomoravský kraj



Thank organization JCMM, Jakub Streit, Jiří Vácha, Luďek Kučera, Miroslav Burda and Jaroslav Hodál