

Using ECLIPSE + PyDEV and Pyjamas

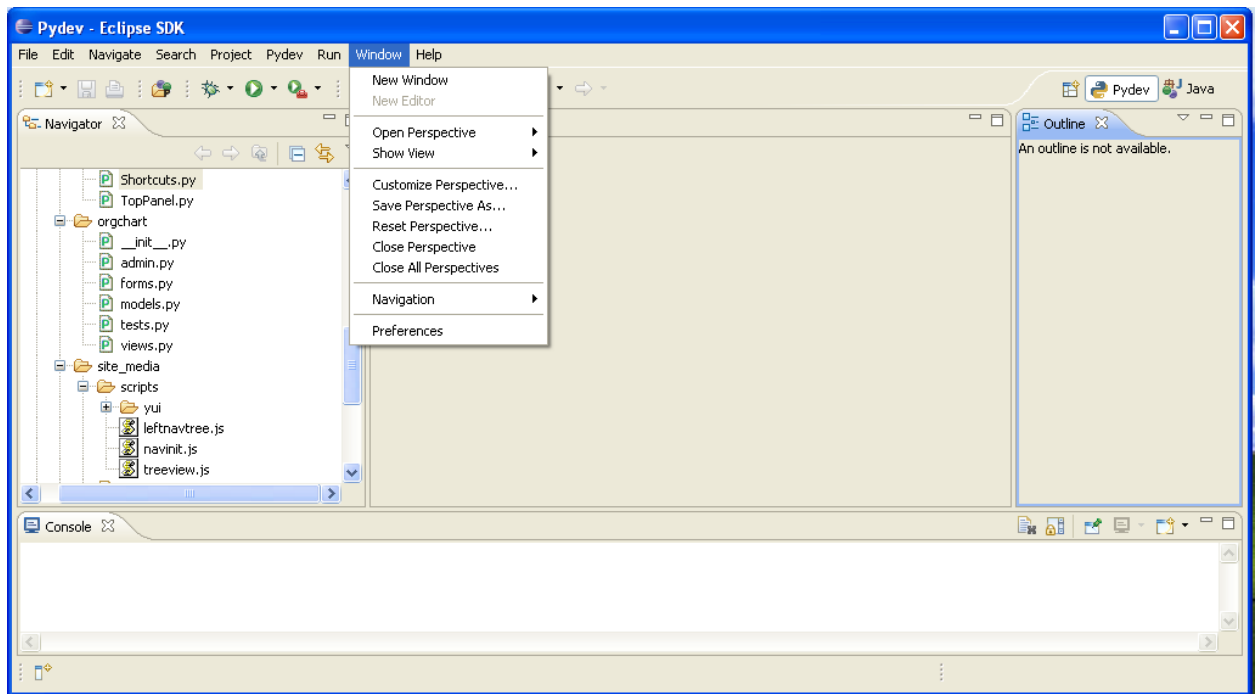
This document provides instructions to setup Pyjamas with ECLIPSE and PYDEV on a windows PC. However the principles can be employed to configure ECLIPSE to support Pyjamas code-completion etc on any platform

1. Download and install python <http://www.python.org/download/>
2. Install ECLIPSE IDE. It can be downloaded from <http://www.eclipse.org/downloads/>
3. Install Pydev: http://pydev.org/manual_101_install.html

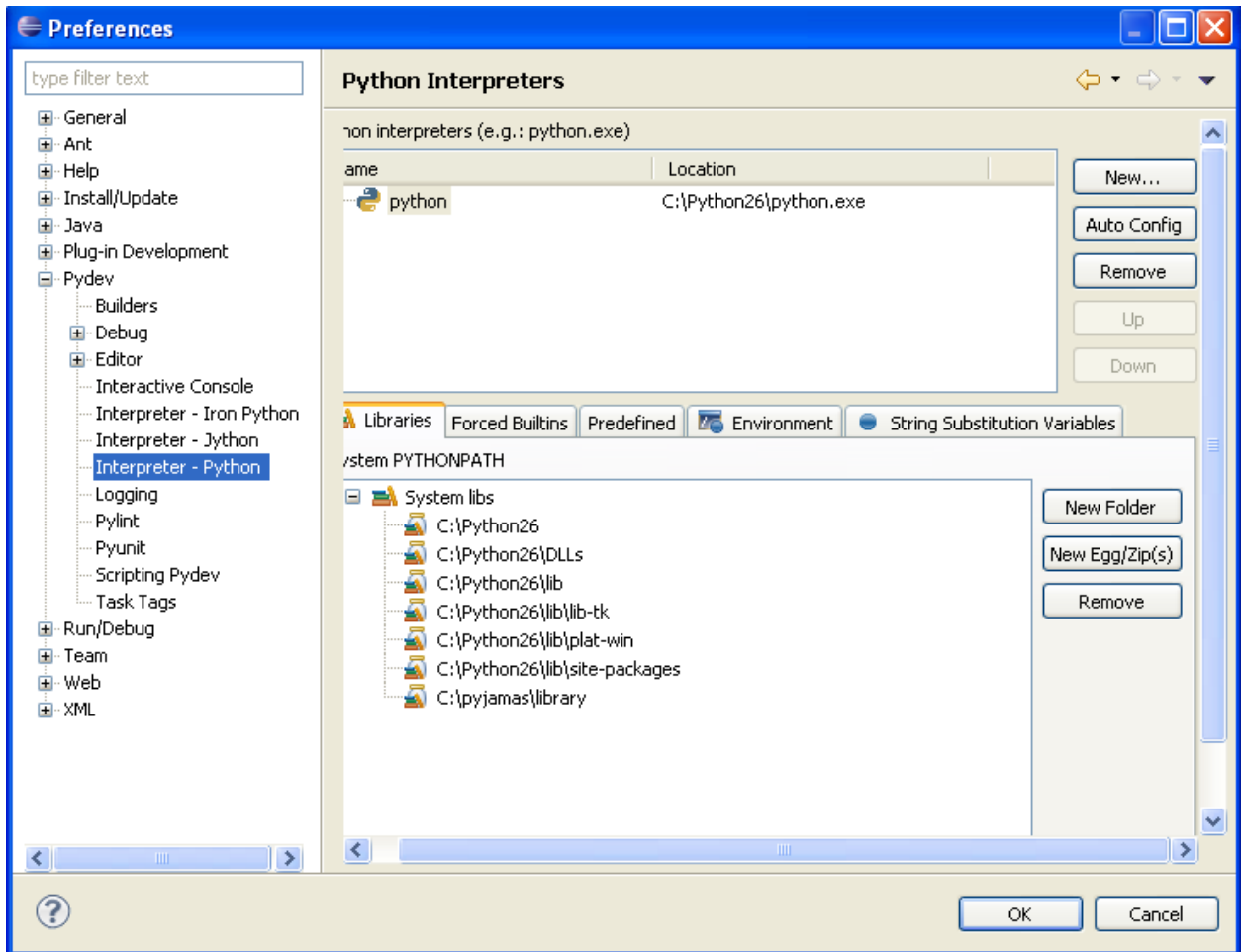
Once you have the ECLIPSE Python development environment setup and ready it's time to install Pyjamas. Remember Pyjamas does not provide a plugin for ECLIPSE so we have to manually add Pyjamas to our ECLIPSE's PYTHON PATH.

Caution: Do not try to add Pyjamas to your Systems. PYTHONPATH, as this might cause undesired results. Only add it to ECLIPSE PYTHONPATH. This way you can experiment with PYJAMAS command-line tools, which is important if you are just begging to explore PYJAMAS. This is also a recommended way of using the PYJS compiler by the Pyjamas team.

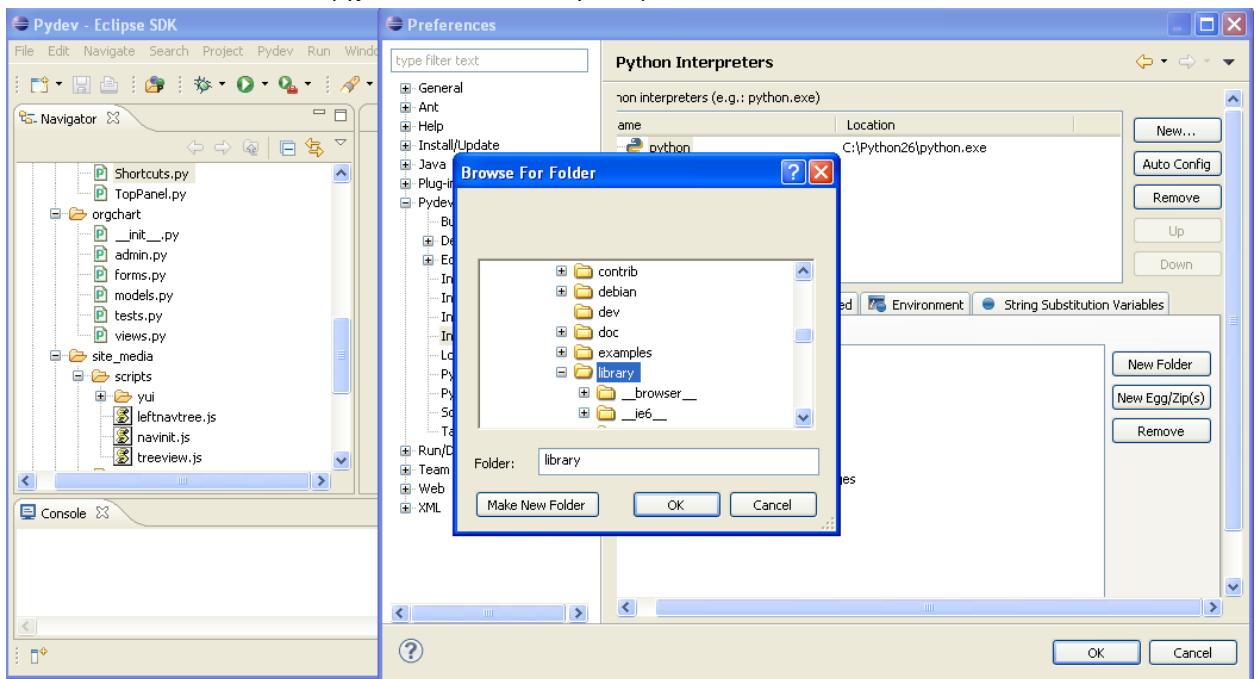
1. First Download Pyjamas from <http://sourceforge.net/projects/pyjamas/>
2. Untar and unzip the folder and save at a suitable location on your drive. For ex: c:\pyjamas, or on Unix
3. Now in you ECLIPSE IDE Menu click **window->preferences**



4. Navigate to pydev->Interpreter-Python



5. Press New Folder and add c:\<pyjamas-folder>\library and press ok.



6. Restart ECLIPSE and you're done. Now try any import statement such as

- a. From Pyjamas.ui.<ctrl-space> and ECLIPSE will give you the access to all of the Pyjamas modules

Enjoy Python, ECLIPSE and Pyjamas.