

DDKWizard v1.3.0a Manual

How to use DDKWizard

CREATED: 2016-04-05

AUTHOR: Oliver Schneider

Copyright © 2006-2016 Oliver Schneider (assarbad.net)

Trademarks appear throughout this text without any trademark symbol; they are the property of their respective trademark owner. There is no intention of infringement; the usage is to the benefit of the trademark owner.

Preface

DDKWizard was written **because I can be very lazy**, plain and simple!

It is a laziness that is so irrational if you think about it twice. Programmers tend to spend hours to solve a problem *generically*TM instead of solving it specifically and tailored to the specific problem within a few minutes (but potentially over and over again with only slight changes). I guess it is similar to proper code versus spaghetti code, writing and calling a function with parameters versus writing numerous similar functions.

When I started using OSRs `ddkbuild.bat` script¹ I soon thought I could rewrite it to make use of all these neat tricks that are allowed by the NT script interpreter² and also add some additional features. You can just download the original version (`.bat`) as well as the rewritten one (`.cmd`) from [OSR Online](#)³ or from the DDKWizard project page at [Bitbucket](#). Soon, however, the need for generic DDKBUILD project creation became “overwhelming” ...

As a side-note: There is another⁴ DDKBUILD script from Mark Roddy at [www.hollistech.com](#) that does mostly the same as the two scripts from OSR. However, I did not take the time to check the compatibility issues that may arise from usage of DDKWizard together with this DDKBUILD “flavor”. If someone ever does it, please let me know and I will probably modify DDKWizard to incorporate the necessary settings. Currently it relies on the fact that the batch and the NT script versions from OSR take the same arguments, so using it with “the other” DDKBUILD is not recommended, but of course you can try it if you are curious.

Compatibility

DDKWizard works with the DDKs of Windows XP, Windows 2003 Server and the Windows Vista/2008 and 7 WDKs⁵. This means all standalone DDKs and WDKs are supported. Starting with the Windows 8 WDK neither DDKBUILD nor DDKWizard would work.

It does not include any configurations for WDF projects and may never include them in future. I’ll just wait for feedback before deciding about it.

It is compatible with Visual Studio .NET, Visual Studio .NET 2003, Visual Studio 2005 and 2008 and the Express Editions of Visual C++ 2005 and 2008. The “normal” Visual C++ versions are supposed to work fine as well. Refer to section 2.5 and section 3.1 for some possible limitations depending on your Visual Studio version.

Visual Studio 2005 and 2008 (and their flavors) support all DDKWizard features!

¹Which was a traditional batch script.

²The NT script interpreter goes indeed far beyond what batch provides!

³You need to be logged on to download the files.

⁴... as far as I know the continuation of the very first DDKBUILD script.

⁵Tested up to and including the 7600.16385.1 WDK.

Prerequisites

DDKBUILD: First of all you need to set up your copy of DDKBUILD according to the version that you downloaded. It may sound strange (and “narcistic”), but I recommend to use the NT script (.cmd) version since it provides extra functionality (see subsection 1.2.1) which can be handy sometimes. Setup of the batch version is explained in section 1.1, while the NT script version is explained in section 1.2. Both require roughly the same steps.

Laziness: You need to be extraordinarily lazy⁶ to even install this wizard! If you are not lazy enough, that is below 7 on a laziness scale from 1 to 10, you must not use this wizard. **Warning: having this wizard installed on your workstation in your company will be a clear hint to your boss that you are lazy. So be careful when installing and using it ;-).**⁷

How to use this manual

If you are viewing this document in a PDF viewer, you can take advantage of the clickable elements such as links to external websites and links between chapters and sections - click the chapter, section or footnote numbers to see the referenced item. Also if you visit the *Contents* at the end of this document you can click the items there (not the page numbers, though). This should make it easier for you to navigate the document and follow back and forward references which occur every now and then — yet it leaves the document in a state where it can be printed out conveniently.

Kindly note that I use the terms WDK and DDK interchangeably, but unless I want to refer to a specific version, I try to stick to the traditional term DDK.

Do you like DDKWizard? Donations & contributions

If you like DDKWizard, please consider donating to any charity you like and trust. But don't feel forced, I wrote it primarily to satisfy my own laziness and the laziness of others ;-).

Also, you will certainly help a lot by providing feedback about possible bugs, feature requests and of course praise. **Contributions (new templates, better source files in existing templates) are very welcome.**

Website

The website of DDKWizard is at ddkwizard.assarbad.net, its project home at [Bitbucket](https://bitbucket.org/oliver-schneider/ddkwizard). There you will find this documentation for download as well as the latest version of the templates and their installer.

An advice

I'd just like to point out how much I liked the two seminars with Mark from OSR and send some greetings to him and the other guys over at OSR. I like the published books, the mailing lists, *The NT Insider* and their commitment to the NT driver community! If you have to work with drivers professionally you *have* to take at least one of their seminars⁸ - **you have to!**

⁶And for those who didn't get it just yet - yes, this is a joke.

⁷Luckily my current employer accepts this form of laziness in exchange for the increased productivity ;-).

⁸... and not be too shy to ask a lot of “stupid” questions ;-)

License

The following license applies to all parts of DDKWizard, *except for any actual project templates, which are released into the PUBLIC DOMAIN - see below.*

The MIT License (MIT)

Copyright (c) 2006-2016 Oliver Schneider (assarbad.net)

Permission is hereby granted, free of charge, to any person obtaining a copy of this software and associated documentation files (the "Software"), to deal in the Software without restriction, including without limitation the rights to use, copy, modify, merge, publish, distribute, sublicense, and/or sell copies of the Software, and to permit persons to whom the Software is furnished to do so, subject to the following conditions:

The above copyright notice and this permission notice shall be included in all copies or substantial portions of the Software.

THE SOFTWARE IS PROVIDED "AS IS", WITHOUT WARRANTY OF ANY KIND, EXPRESS OR IMPLIED, INCLUDING BUT NOT LIMITED TO THE WARRANTIES OF MERCHANTABILITY, FITNESS FOR A PARTICULAR PURPOSE AND NONINFRINGEMENT. IN NO EVENT SHALL THE AUTHORS OR COPYRIGHT HOLDERS BE LIABLE FOR ANY CLAIM, DAMAGES OR OTHER LIABILITY, WHETHER IN AN ACTION OF CONTRACT, TORT OR OTHERWISE, ARISING FROM, OUT OF OR IN CONNECTION WITH THE SOFTWARE OR THE USE OR OTHER DEALINGS IN THE SOFTWARE.

The *included* project templates are all in the PUBLIC DOMAIN, but the same disclaimer, as stated in the above license, applies:

This software is provided 'as-is', without any express or implied warranty. In no event will the authors be held liable for any damages arising from the use of this software.

Actually the files, once you create a project with DDKWizard, will contain your copyright if you configured the values for `Author` and `CompanyName` as described in subsection 3.2.3 and you have at least Visual Studio 2005. **No restrictions apply to created projects.**

Including DDKWizard in computer magazines, etc.

Apart from above license and disclaimers, there are no restrictions if you want to include DDKWizard in software collections or distribute it with computer magazines. If you include it in computer magazines I would like to hear from you and it'd be nice if you would send me an author's copy, but *neither is required.*

Along with this I should mention that you are of course allowed to redistribute DDKWizard on your websites as well. If you redistribute DDKWizard on your websites, please contact me if you are interested in serving always the latest version.

Chapter 1

Setup of DDKBUILD

1.1 ddkbuild.bat

This is the classic. `ddkbuild.bat` is easily installed by following these few steps:

1. Download `ddkbuild.bat` from [this page](#).
2. Copy `ddkbuild.bat` into a directory where you want it to reside. I usually choose a directory that can be accessed from anywhere else. Let us say you have the DDKs for Windows XP and 2003 installed and they are located in `C:\WINDDK\2600` and `C:\WINDDK\3790.1830` respectively. Now you *could* copy `ddkbuild.bat` into the common root folder of your DDKs, in your case `C:\WINDDK`.
3. Append the path of the directory where `ddkbuild.bat` resides to the `PATH` variable of either your user account or to the system-wide `PATH` variable. In either case right-click *My Computer* and choose *Properties*. Then go to the *Advanced* page and click *Environment Variables*. There you can add or edit the `PATH` variable of the system¹ or your user account. Figure 7.1 shows the dialog. Leave the dialog open for item 5.
Note: Leaving out this step will still enable you to use `ddkbuild.bat` from within your IDE but will prevent you from using it conveniently from the command line.
4. Start up your Visual Studio² IDE and from the *Tools* menu choose *Options* and in the left navigation pane choose the folder *Projects and Solutions* and then *VC++ Directories*. From the combobox *Show directories for* choose *Executable files* and add the path of the directory where `ddkbuild.bat` resides here as well. Figure 7.2 shows the dialog. This step is optional if you set the `PATH` according to the previous step.
5. Depending on the DDKs you have installed, you should set the variables³ (using the dialog opened before, in point 3) with the following names to point to the respective directories⁴:

- **Windows XP DDK:**

For this DDK set the variable `WXPBASE` to point to the base directory of your Windows XP DDK. A usual location is `C:\WINDDK\2600`.

¹... if you are an administrator.

²Referring to Visual Studio I mean specifically Visual C++.

³It is your choice whether you set the system-wide variables or those for your user account.

⁴For the NT4 DDK you can use the `NT4BASE` variable, for the Windows 2000 DDK the `W2KBASE` variable. However, this is not supported by DDKWizard, `W2KBASE` was supported before version 1.3.0.

- **Windows 2003 Server DDK:**

For this DDK set the variable `WNETBASE` to point to the base directory of your Windows 2003 Server DDK. A usual location is `C:\WINDDK\3790.1830` (for the 2003 SP1 DDK).

- **Windows Vista/Windows 2008 Server WDK:**

For this WDK (formerly LDK) set the variable `WLHBASE` to point to the base directory of your WDK. The builds 6000 and 6001.18000 through 6001.18002 are supported at the time of this writing.

- **Windows 7/Windows 2008 Server R2 WDK:**

For this WDK set the variable `W7BASE` to point to the base directory of your WDK.

The *exact* version of the DDK does not matter (i.e. 2003 SP1 DDK counts as 2003 DDK). Note that you can only use one environment variable setting per user/system. DDKWizard attempts to work around this problem, which will be covered in section 2.5. If you are curious which DDK supports which target platforms, take a look into the FAQ.

1.2 ddkbuild.cmd

To be honest the configuration of `ddkbuild.cmd` is almost identical to the one of `ddkbuild.bat` (covered in section 1.1) except for the name of the file. So to spare me the pain in my fingertips after too much typing, just imagine that I wrote `ddkbuild.cmd` instead of `ddkbuild.bat` and turn to section 1.1 for a reference how to install it.

1.2.1 But, ddkbuild.cmd is even cooler ;-)

Yeah, I know the guys at OSR are going to hate me for this, but since I never got `BINPLACE` to work properly⁵ I decided to add what I consider a very useful feature in `ddkbuild.cmd`: hook scripts.

Hook scripts? That is supposed to be something new? Well, no. Of course it is nothing revolutionary enough to be patented. I like it nevertheless and I hope so do you.

If you put the following three files into the directory where your `SOURCES/DIRS` file⁶ resides, they will be executed by `ddkbuild.cmd` automatically. If a file does not exist, the respective feature is being turned off. The files are:

- `ddkbldev.cmd` is being searched and started first. Use it to override any of the environment variables that `DDKBUILD` normally expects to be set! It is recommended you also read section 1.2.2.
- `ddkprebld.cmd` for any commands you'd like to execute before the `BUILD` utility of the used DDK is being called.
- `ddkpostbld.cmd` for any commands you'd like to execute after the `BUILD` utility of the used DDK has been called. One such thing could be code-signing the binaries.

As I said, it is not revolutionary, but since you can now use the variables declared by both `DDKBUILD`⁷ and `SETENV.BAT`⁸ you have a wealth of information at your hands that you can use to access the files that have been built - or modify header files in the pre-build step, e.g. to increase the build number of your binary.

⁵... even with the respective variables cleared.

⁶Only one set of these scripts is allowed per invocation of `DDKBUILD`.

⁷This part would be specific to the `DDKBUILD` you chose, currently only `ddkbuild.cmd` supports this, though.

⁸... the script used by the respective DDK to prepare a proper build environment with all the environment variables set ...

Set the variable `OSR_ERRCODE` inside one of these hook scripts to a value other than zero and `DDKBUILD` will abort the build, or in case of the post-build hook script at least return failure to the caller (e.g. Visual Studio).

1.2.2 Auto-detection and global variables in `ddkbuild.cmd`

Version 7.0 of `ddkbuild.cmd` and its numerous beta versions and release candidates had introduced a dumb auto-detection of the path to the requested DDK. As the DDK is defined by the first parameter to `DDKBUILD` it can start making some good guesses as to where it would possibly find the respective DDK. However, this allows only some rather primitive guesses. With version 7.1 of `ddkbuild.cmd`, I introduced a much enhanced version of this auto-detection mechanism. It works like this:

1. It detects whether `reg.exe` is available on the system⁹.
2. Now everything below this point applies only if you have not set the environment variable corresponding to the DDK base directory as described in section 1.1.
3. If `reg.exe` is available, it tries to find the install keys for the requested DDK in reverse order. This means that if you requested one of the `-WLH*` builds, it would first search for the latest version it is aware of and then for the next older one until it finds one. Once found, it returns the path of the newest DDK.
Note: the detection takes into account that there are 32bit and 64bit Windows editions and handles them properly.
4. If the auto-detection through registry didn't work out, `DDKBUILD` will fall back to the old "brute-force" detection method that had already been included before version 7.1.
5. If neither auto-detection worked, the script will kindly remind you to set the base directory variable and even point out which one to set for the build type you want.

If you want to make sure to use a particular build of the DDK(s) you installed, make sure to set the base directory environment variable corresponding to your DDK. The auto-detection feature is mainly there to help pinpoint the problem if you forgot to set the variable properly.

Base directory environment variables

If you don't like the idea of having a global environment variable that is supposed to cater all your projects, but instead want to be able to build, for example, one project with the WDK build 6000 and another one with build 6001.18000 without changing a global environment variable all the time, I suggest you really use `ddkbuild.cmd` over any other flavor and use the build script `ddkbldevn.cmd` (see subsection 1.2.1) in your projects to set this variable on a project-to-project basis.

Nothing keeps you from overriding the globally set environment variable inside `ddkbldevn.cmd` to get this level of customization. You can still keep your global variable pointing to the newest DDK (or whichever DDK you like) in parallel. `ddkbuild.cmd` is all about choices and versatility.

⁹Windows XP and newer seem to have it by default, on Windows 2000 without SP it doesn't seem to exist.

Chapter 2

Usage of the wizard

2.1 Installing the wizard

To install DDKWizard you should only need Windows 2000 or newer, Visual Studio .NET, .NET 2003, 2005 or 2008¹ and a few clicks. Since laziness is one of the pillars on which this software was built, the installer is as easy as can be. If the installer finds Visual Studio to be installed it will install the project wizard for the found version(s). As far as I know version 2003 and 2005 don't always go well together, but the installer is even prepared to handle that case.

The first page shows the license terms and a disclaimer to which you have to agree in order to proceed. The next page lets you choose the location to which the main files will be installed (usually `%ProgramFiles%\DDKWizard`). After clicking *Next* the installer will either quit with an error if no supported Visual Studio installation could be found or show the final page which offers you to edit the configuration file.

After these few steps you can start the VS IDE (actually it won't even hurt if it was already running) and try to create a new project. Depending on the version this is either `Shift+Ctrl+N` (2003) or `Ctrl+N` (2005 and 2008) as the default setting.

You will notice a new folder *DDK Project* in the left pane and you can choose the type of project you want to create. As of this writing the only supported project types are *Driver*, *NativeApp*, *EmptyDrv*², *Win32CUI* (for DDKBUILD Win32 console projects) and *Win32DLL*, although I already plan to include maybe two more specific driver types such as *Display Mirror Driver* and *FS Driver*. The biggest difference would be the contents of the files created for the project.

From the right pane choose the type of project to create and set the name of the project and solution as well as the other options at the bottom.

DDKWizard does not leave any footprint in the registry other than the entry into the *Add or Remove Programs* list.

2.2 Uninstalling the wizard

Who needs this anyway?

Okay, even if you choose this option, I am not going to cry, I promise ... ;). To uninstall DDKWizard

¹... only Visual C++ instead of the full-fledged Visual Studio suite will be enough as well.

²This is currently the only project type that cannot be build straight after creation because it creates just a skeleton project.

go to the *Control Panel* and from *Add or Remove Programs* choose DDKWizard to remove it from your system. The uninstaller should simply remove the copied files and quit.

Warning: If you ever store any files inside the directories that have been created by DDKWizard these files of yours are going to be deleted during removal of DDKWizard. So if you want to keep these files, create a backup of them manually beforehand!

2.3 Wizard project types

As of this writing the wizard for all project types provides the same options, except for *EmptyDrv* which ignores a few. But these options will not be shown/active anyway.

The configuration is very simple and I am just going through all the options and will give a brief description for every one of them:

- Choose the DDKBUILD you want to use (default: `ddkbuild.cmd`):
This option allows you to choose between `ddkbuild.bat` (section 1.1) and `ddkbuild.cmd` (section 1.2).
- Which DDK(s) do you want to use (default: Windows 2003 DDK + WDK):
This allows you to choose multiple DDKs from the list. A project will be created for every DDK you choose and prefixed with the handle of the DDK.
Value name: `listbox.DDK_CHOICE`
- Support 64bit builds (default: `off`):
This option allows you to create project configurations for 64bit build types. Note, that starting with version 1.0.3 you can choose which of the two 64bit processor platforms - AMD (default: `on`) and Intel (default: `on`) - you want to use.
Value name: `checkbox.SUPPORT64BIT`
Value name: `checkbox.SUPPORT64BIT_AMD64`
Value name: `checkbox.SUPPORT64BIT_IA64`
- Create PREfast configuration (default: `on`):
This option allows you to create cloned project configurations that are preconfigured for a PREfast³ build. Note, that starting with version 1.0.3 you have the option to create the PREfast clone project configuration only for checked build configurations (default: `on`).
Value name: `checkbox.PREFASTCONFIG`
Value name: `checkbox.PREFASTCONFIG_ONLYCHECKED`
- Stricter type checking (`.cpp`) (default: `on`):
This option allows you to create C++ files instead of C files. This causes the compiler to perform stricter type checking and allows to use the syntax of C++ (e.g. C++-style type-casts⁴, declare variables just before you use them or create typecast operators to convert between `WCHAR*` and `UNICODE_STRING`, for example).
Value name: `checkbox.STRICTERCPP`
- Auto-increment build number (default: `on`):
This feature is only available if you use the `ddkbuild.cmd` script.
It will create another `.cmd` script that will automatically increment the build number with every

³If you do not know PREfast, read on it. This is definitely a must-use for any driver writer. It is also available for user mode development starting with the Windows Vista SDK.

⁴... which I personally prefer ...

build. It is a matter of convenience so you can turn it on or off at will.

Value name: `checkbox.AUTOINCBUILDNR`

- Create pre/post build scripts (default: on):

This feature is only available if you use the `ddkbuild.cmd` script.

If you turn it on, three sample scripts will be created as described in subsection 1.2.1. This option is mandatory if you checked the previous option (“Auto-increment build number”).

Value name: `checkbox.BUILDSRIPTS`

- Create `makefile.inc` (default: off):

This will just include a `makefile.inc` into your `SOURCES` file into which you can place other custom build steps. The respective option in the `SOURCES` file is `NTTARGETFILES`.

Value name: `checkbox.MAKEFILEINC`

- Create message file (`.mc`) (default: off):

This creates a template message file which is integrated into the created project. That is, it will be built and linked into the binary once you build the project.

Value name: `checkbox.MESSAGEFILE`

- Use property sheet (default: on):

This option and the following ones are only available to users of Visual Studio 2005 (and later).

This option creates a property sheet that is being inherited by the projects created. This allows you to manipulate the behavior of the project by modifying some default options. Also environment variables can be declared. By default the variable `DDKBUILD_PATH` is declared.

Value name: `checkbox.PROPERTYSHEET`

- Override (full) `DDKBUILD` path (default: off):

Enabling this option, you can override the value of the environment variable `DDKBUILD_PATH` for the created projects. This allows you for example to customize `DDKBUILD` and point the projects to your own version of `DDKBUILD`⁵.

Note that you have to give the full path including the filename of your `DDKBUILD` script.

Value name: `checkbox.OVERRIDEDDKBUILD` and `text.OVERRIDEDDKBUILD`

- Override `WXPBASE` (default: off):

Similar to the previous option this allows you to override an environment variable. In this case the variable `WXPBASE` used by `DDKBUILD` to locate the Windows XP DDK.

Value name: `checkbox.OVERRIDEWXPBASE` and `text.OVERRIDEWXPBASE`

- Override `WNETBASE` (default: off):

Similar to the previous option this allows you to override an environment variable. In this case the variable `WNETBASE` used by `DDKBUILD` to locate the Windows 2003 Server DDK.

Value name: `checkbox.OVERRIDEWNETBASE` and `text.OVERRIDEWNETBASE`

- Override `WLHBASE` (default: off):

Similar to the previous option this allows you to override an environment variable. In this case the variable `WLHBASE` used by `DDKBUILD` to locate the Vista/2008 Server WDK.

Value name: `checkbox.OVERRIDEWLHBASE` and `text.OVERRIDEWLHBASE`

- Override `W7BASE` (default: off):

Similar to the previous option this allows you to override an environment variable. In this case

⁵DDKWizard still makes the assumption that the options are compatible with OSRs `DDKBUILD` versions.

the variable `W7BASE` used by `DDKBUILD` to locate the Windows 7/Windows 2008 Server R2 WDK.
Value name: `checkbox.OVERRIDEW7BASE` and `text.OVERRIDEW7BASE`

As you can see the last few *value names* appear in pairs. This is due to the fact that you have to check the checkbox in order to override one of the text fields in the dialog. So naturally the same holds for the customization of DDKWizard through the configuration file.

Note: the default paths given in the text fields are *not* the values of the environment variables or so. They are just an example of what is expected in those fields if you check the respective checkbox.

2.4 Projects and configuration created by the wizard

DDKWizard creates a project for each DDK you choose in the options. So if you choose to create configurations for the Windows XP DDKs, for example, DDKWizard will create a project with the name `<ProjectName>.WXP`⁶. Each of these created projects will contain the configurations for the specific DDK and the solution will contain a *solution configuration* for each of the *project configurations* in all projects.

The *solution configurations* are pre-configured to include only the project which is relevant to the current (solution) configuration. Therefore it is irrelevant which one of the projects you choose as startup project - the important setting is the *solution configuration* that you select⁷. The following solution configurations can be created depending on your choice of DDKs.

- **WXP free and WXP checked:**
Use the Windows XP DDK to build a 32bit driver with Windows XP as the target operating system platform.
- **WXP64 free and WXP64 checked** (only if 64bit support was activated):
Use the Windows XP DDK to build a 64bit (Intel Itanium) driver with Windows XP as the target operating system platform.
- **WXP2K free and WXP2K checked:**
Use the Windows XP DDK to build a 32bit driver with Windows 2000 as the target operating system platform.
- **WNET free and WNET checked:**
Use the Windows 2003 Server DDK to build a 32bit driver with Windows 2003 Server as the target operating system platform.
- **WNET64 free and WNET64 checked** (only if 64bit support was activated):
Use the Windows 2003 Server DDK to build a 64bit (Intel Itanium) driver with Windows 2003 Server as the target operating system platform.
- **WNETXP free and WNETXP checked:**
Use the Windows 2003 Server DDK to build a 32bit driver with Windows XP as the target operating system platform.
- **WNETXP64 free and WNETXP64 checked** (only if 64bit support was activated):
Use the Windows 2003 Server DDK to build a 64bit (Intel Itanium) driver with Windows XP as the target operating system platform.

⁶Where `<ProjectName>` is the name of the project you chose in the *New Project* dialog.

⁷Explicitly building the project that is not selected by the solution configuration (e.g. through right-click) results in undefined behavior. It isn't dangerous, but it is silly ;)

- **WNETAMD64 free and WNETAMD64 checked** (only if 64bit support was activated):
Use the Windows 2003 Server DDK to build a 64bit (AMD64, x64, EM64T) driver with Windows XP64/2003 Server as the target operating system platform.
- **WNET2K free and WNET2K checked**:
Use the Windows 2003 Server DDK to build a 32bit driver with Windows 2000 as the target operating system platform.
- **WLH free and WLH checked**:
Use the Vista/2008 Server WDK to build a 32bit driver with Windows Vista/2008 Server as the target operating system platform.
- **WLH2K free and WLH2K checked**:
Use the Vista/2008 Server WDK to build a 32bit driver with Windows 2000 as the target operating system platform.
- **WLHXP free and WLHXP checked**:
Use the Vista/2008 Server WDK to build a 32bit driver with Windows XP as the target operating system platform.
- **WLHXP64 free and WLHXP64 checked**:
Use the Vista/2008 Server WDK to build a 64bit (Intel Itanium) driver with Windows XP as the target operating system platform.
- **WLHNET free and WLHNET checked**:
Use the Vista/2008 Server WDK to build a 32bit driver with Windows 2003 Server as the target operating system platform.
- **WLHNETI64 free and WLHNETI64 checked** (only if 64bit support was activated):
Use the Vista/2008 Server WDK to build a 64bit (Intel Itanium) driver with Windows 2003 Server as the target operating system platform.
- **WLHNETX64 free and WLHNETX64 checked** (only if 64bit support was activated):
Use the Vista/2008 Server WDK to build a 64bit (AMD64, x64, EM64T) driver with Windows XP64/2003 Server as the target operating system platform.
- **WLHI64 free and WLHI64 checked** (only if 64bit support was activated):
Use the Vista/2008 Server WDK to build a 64bit (Intel Itanium) driver with Windows Vista/2008 Server as the target operating system platform.
- **WLHX64 free and WLHX64 checked** (only if 64bit support was activated):
Use the Vista/2008 Server WDK to build a 64bit (AMD64, x64, EM64T) driver with Windows Vista/2008 Server as the target operating system platform.
- **W7 free and W7 checked**:
Use the 7/2008 Server R2 WDK to build a 32bit driver with Windows 7/2008 Server R2 as the target operating system platform.
- **W7I64 free and W7I64 checked**:
Use the 7/2008 Server R2 WDK to build a 64bit (Intel Itanium) driver with Windows 7/2008 Server R2 as the target operating system platform.
- **W7X64 free and W7X64 checked**:
Use the 7/2008 Server R2 WDK to build a (AMD64, x64, EM64T) driver with Windows 7/2008 Server R2 as the target operating system platform.

- **W7LH free and W7LH checked:**
Use the 7/2008 Server R2 WDK to build a 32bit driver with Windows Vista/2008 Server as the target operating system platform.
- **W7LHI64 free and W7LHI64 checked:**
Use the 7/2008 Server R2 WDK to build a 64bit (Intel Itanium) driver with Windows Vista/2008 Server as the target operating system platform.
- **W7LHX64 free and W7LHX64 checked** (only if 64bit support was activated):
Use the 7/2008 Server R2 WDK to build a 64bit (AMD64, x64, EM64T) driver with Windows Vista/2008 Server as the target operating system platform.
- **W7NET free and W7NET checked** (only if 64bit support was activated):
Use the 7/2008 Server R2 WDK to build a 32bit driver with Windows 2003 Server as the target operating system platform.
- **W7NETI64 free and W7NETI64 checked** (only if 64bit support was activated):
Use the 7/2008 Server R2 WDK to build a 64bit (Intel Itanium) driver with Windows 2003 Server as the target operating system platform.
- **W7NETX64 free and W7NETX64 checked** (only if 64bit support was activated):
Use the 7/2008 Server R2 WDK to build a 64bit (AMD64, x64, EM64T) driver with Windows XP64/2003 Server as the target operating system platform.
- **W7XP free and W7XP checked** (only if 64bit support was activated):
Use the 7/2008 Server R2 WDK to build a 32bit driver with Windows XP as the target operating system platform.

As you can see these names follow the naming of the target platforms for DDKBUILD and the list of configurations can get quite long. Therefore I recommend to select only the DDKs which you are definitely going to use.

Please note as well that, depending on your selection to create **PREfast** configuration clones, one additional configuration will appear per above described configuration with the hint “PREfast” appended to its name.

2.5 Property sheets (VS 2005 or later)

With Visual Studio 2005 Microsoft introduced a neat feature called *Property Sheets*. This is no more than an XML file which provides default settings for the build tools of a project. The specific feature DDKWizard makes use of is the *Macros* setting. There you can set (or *override* global) environment variables for the current project. Now that I mentioned it, many of you are already saying ... “aha so I can ...” ... yep, you can do almost anything. Finally you can create custom projects for a DDK which is useful if the DDK is checked into your version control system. I had never before considered version control systems for such a use, but I was taught this approach at the NTDEV mailing list.

At least if you use Visual Studio 2005 or later I recommend you leave the respective checkbox checked to include support for *Property Sheets*. The property sheet that will be included in the project is named *ProjectName.vsprops* and contains just the declaration of a variable named DDKBUILD_PATH in the default configuration⁸.

⁸Yes, the variable DDKBUILD_PATH will be set even if you do not override the path to DDKBUILD. The default setting will just be `ddkbuild.bat` or `ddkbuild.cmd` according to the chosen version. This allows you to override this setting as well as others at a later point without changing too much in your project’s properties, since the property sheet is already included.

Leaving the option active will give you more flexibility during the course of your project. For example if you ever decide that you need to customize one of the environment variables you will be able to do so without much effort. The only thing you need to do is going to the *View* menu, choosing *Other Windows* and then *Property Manager* which provides a convenient way to customize the already-included property sheet.

This is the method used by DDKWizard to overcome certain limitations, e.g. that only one environment variable per user/system can be declared. The option to override the base directory variables also uses this method.

But I only have Visual C++/Studio .NET/2003?!

Worry not. Once again `ddkbuild.cmd` comes to the rescue. You can use `ddkbldenv.cmd` as described earlier in subsection 1.2.1 and section 1.2.2 to achieve similar results.

Also do not underestimate the use of this additional build script. While property sheets are a pretty powerful feature, they will only work *inside* Visual Studio. DDKBUILD on the other hand will work from the command line or other integrated development environments and consequently will make use of the build scripts such as `ddkbldenv.cmd`.

Of course, if you use neither a modern Visual C++/Studio *nor* `ddkbuild.cmd`, you are definitely not going to get far with property sheets or `ddkbldenv.cmd`. Nothing *I* could do about this, though.

Chapter 3

Configuration of the wizard

Starting with version 1.1.0 DDKWizard can be customized by the user. This works via the manipulation of an INI-style configuration file that is put into the installation directory of DDKWizard.

I found that it might be a bit strange to force users of DDKWizard to use *my* favorite settings. So I decided to let the users customize their settings. Even better, this will give you the power to customize the behavior of DDKWizard *per project type*.

3.1 Compatibility limitation(s)

There is a major caveat with this new feature when used with Visual Studio .NET and .NET 2003. If your Internet Explorer security zones are configured accordingly (i.e. the default), you will always get a nasty message box warning you of an ActiveX control being run¹. This can be a major nuisance, so I added the means to enable and disable this new feature easily and *it is by default disabled* for all Visual Studio versions prior to 2005! Visual Studio 2005 (or later) users can skip the rest of this section and proceed to the next one.

I am not willing to fix this in any way since Visual Studio 2005 fixed it already. Also I am not willing to include the means to adjust the security zones in the installer as it would not be right in my opinion ... and some system admins might decide to hunt me down and torture and kill me for doing it ;-) ... However, if you are a user of Visual Studio .NET or .NET 2003, you can easily enable the configuration file feature by changing the very last line of the script file “DDKWizIniFile.js” so that it reads:

```
var bOverrideOldVsConfig = true;
```

But again, be prepared to get the nasty warning message every time you use DDKWizard then. So to disable it again, replace “true” by “false” again or simply reinstall DDKWizard.

You find this script file in the installation folder of DDKWizard - which is by default in the program files folder (%ProgramFiles%\DDKWizard) but that can be overridden during the installation.

As you can see, the decision is up to you. I for one would *only* enable it if I really need the customization feature and leave it disabled otherwise. Usually DDKWizard would not be used on a daily basis, so, while being a major nuisance to me, it might be a very minor nuisance to you compared to the utility the fine-grained configuration of DDKWizard provides to you.

¹The control being run is `Scripting.FileSystemObject` which is required to read the configuration file that is the heart of this new feature. So sadly there is no way of replacing this particular code.

3.1.1 Workarounds?!

You might want to work around the problem with Visual Studio .NET and .NET 2003 by simply editing the file `default.htm` which exist in the subfolder of

```
%ProgramFiles%\DDKWizard\Wizards\\HTML\1033
```

for each of the project types “Driver”, “EmptyDrv”, “NativeApp”, “Win32CUI” and “Win32DLL”. Of course you should know best where you installed DDKWizard, so the path may vary depending on your choice (the sample path above is the default location).

The `default.htm` contains a number of `symbol`-tags at the beginning whose `value` can be adjusted according to your needs. Unlike customizations in the actual configuration file, reinstalling DDKWizard or upgrading/updating it will cause *these* adjustments in `default.htm` to be lost (see section 3.3). So use this method carefully!

3.2 The INI file explained

In section 2.3 you will find a comprehensive list of all options. Along with the explanation of every option, you will find its *value name* inside the configuration file given.

But let us start with the general overview of the INI file (this is how I will call the configuration file from now on). Here are a few simple hints.

- Any section name can occur more than once.
- Any *value name* that is not recognized will be ignored.
- The last value for a given *value name* will override any previous setting for this *value name* in the same section.
- Section names *are* case-sensitive!
- Comment lines start with a semi-colon: “;”. There may be an arbitrary number of blank spaces or tabs before that semi-colon for formatting purposes.
- There are no multi-line comments.
- The default INI file will give you an overview of all available *value names* and sections.
- Lines with empty values are ignored with the sole exception of string values!

3.2.1 Special values

There are special rules for the values. A value of “`default`” means that the respective setting will not be overridden! This also means that text fields or user variables can never be set to “`default`”².

3.2.2 Value types

There are four types of values:

- **The user variables** are simple text fields and can contain virtually any text. The same holds for values **whose value names start with “`text.`”**. For both of them, the leading and trailing

²Effectively yielding the same behavior as empty values.

blank spaces (as well as tabs) are removed from the value. This might be of importance for troubleshooting, but I consider it a minor nuisance, so this is a non-issue for me and needs no bug-reporting.

- **Value names that start with “checkbox.”** can have exactly three valid values: `default`, `true` and `false`. The first has been explained and the latter two are easily explained with the state of the checkbox which is being overridden. So `true` will cause the checkbox to become checked and `false` means the checkbox will be unchecked. Any other value will be ignored.
- **Value names that start with “listbox.”** can have special meanings, so each of the “listbox.” values will be separately explained in subsection 3.2.5 *ff.*

3.2.3 Section [General]

There is one INI section [General], which contains settings that override what I call “user variables”. These will be replaced in the template files when the new project is created. To give you an example - there is a value called `Author`, which will put the author’s name into the file headers of source files. The same holds for the `CompanyName`³, which will also replace the respective placeholder value in the file headers. `Website` allows you to give a website that will be used in the version resource of the created binaries.

Currently these are the only supported “user variables” inside this INI section.

3.2.4 [Project.*] sections

Each of the following section names is valid as well and overrides the default dialog settings for the respective project type:

- [Project.Driver]
- [Project.EmptyDrv]
- [Project.NativeApp]
- [Project.Win32CUI]
- [Project.Win32DLL]

Note, that the values you override here will have influence on the default settings of the DDKWizard dialog for the respective project types, but they will not allow to override “user variables” on a per-project-type basis. “User variables” are always global.

All the values and their meaning are explained in section 2.3. So once you start customization, the default values given there are nonsense, of course.

3.2.5 Value name listbox.DDK_CHOICE

This is one of the value names prefixed with “listbox.” and therefore needs further explanation. Note, that this will change over time if new DDKs get supported by DDKWizard.

Currently this value is a comma-separated list of numbers from zero to three. Each of these values stands for one of the supported DDKs, as follows:

³This is the value that appears right after the “by” in the copyright notice. So it is not necessarily a company name for you.

- 0 = Windows XP DDK
- 1 = Windows 2003 DDK
- 2 = Windows Vista/2008 Server WDK
- 3 = Windows 7/2008 Server R2 WDK

So if the following line appears for one of the project types “`listbox.DDK_CHOICE = 0,2`” this means that the Windows XP and Vista/2008 DDKs will be preselected for the respective project type. If you want DDKWizard to force none of the DDKs to be selected, use the following setting “`listbox.DDK_CHOICE = none`”. Practically any value that is not a valid comma-separated list of numbers and not empty or “`default`” will have the same effect as “`none`”. This is due to the fact that empty values are ignored by the INI parser code.

3.3 Is the configuration persistent?

Yes, once the INI file is being put into the installation folder, you will be asked the next time whether you want to overwrite your (possibly customized) INI file with a new default one or keep your (modified) version if you install a newer version of DDKWizard over an older one or reinstall the current version.

So don't be afraid, your settings will be preserved - given you choose to keep your modified file ;-) ... However, the uninstaller *will remove* the whole installation directory. So if you intend to install DDKWizard again, please make a manual backup of the configuration file in a safe place *before* you start the uninstaller!

Note: to upgrade your DDKWizard installation to a newer version, you do not have to uninstall the currently installed version. Simply starting the installer and installing “over” the existing installation will do the trick.

Chapter 4

Tech-speak ...

4.1 Custom wizards

Frankly speaking the custom wizard created by Visual Studio - if you choose a to create a new project of just this type - is horrible. The HTML that is being created is so ugly and so far from any standard that I basically replaced all of it except for the symbols in the beginning and the JScript parts. Check out chapter 5 to find out more on how to create own custom project templates.

4.2 `./HTML/1033/default.htm`

This is the HTML file which is being displayed if you choose to create one of the project types supplied by DDKWizard. It contains several symbols as well as all the logic of which options to enable/disable according to the version of the Visual Studio IDE and in relation to the other options.

Most symbols are *statically* defined. One which is added *dynamically* is `DDK_LISTBOX` because I found no other way that would allow me to provide a multiple choice listbox than to read the selected entries once the user clicks *Finish*. The other symbols match the options presented in section 2.3 for each project type.

4.3 `./Scripts/1033/default.js`

As all programmers do for their spare-time projects, I'll supply the comments if I ever find time :o) ... In fact you will find some comments in the source, already.

Chapter 5

Creating your own custom project templates

If you like to create custom project templates, the best starting point is to pick one of the existing templates from DDKWizard and modify them. In any case you will have to register the new templates with each version of Visual Studio or Visual C++. The steps should work for the versions 2003 through 2008.

5.1 Registration files

For the sake of brevity, I will assume you have Visual Studio 2005 and that it is installed inside `%ProgramFiles%\Microsoft Visual Studio 8`. The other versions of Visual Studio are very very similar in this respect, so you need no more than common sense to figure it out.

I will call the installation directory just `<VSDIR>` from now on to make it clearer where the respective *subfolders* are located.

5.1.1 YourTemplate.vsz - where are your template files?

Inside `<VSDIR>\VC\vcprojects\DDK Project` create a new `.vsz` file or copy an existing one. Inside there you will have to change the values `WIZARD_NAME` and `ABSOLUTE_PATH` to fit your environment (and taste, in case of the name). Here is how it looks for my `EmptyDrv.vsz`:

```
VSWIZARD 7.0
Wizard=VsWizard.VsWizardEngine.8.0
Param="WIZARD_NAME = EmptyDrv"
Param="ABSOLUTE_PATH = C:\Program Files (x86)\DDKWizard\Wizards\EmptyDrv"
Param="FALLBACK_LCID = 1033"
```

5.1.2 YourWizard.vmdir - registering with Visual Studio

Note: this refers to `<VSDIR>\VC\vcprojects\DDK Project` as well.

You will have to adjust the file `DDKWizard.vmdir` to contain some information to be shown in the project creation dialog. You will have to figure out the format of the file yourself, though.

5.2 Your templates

Now we come to the interesting parts. You may have guessed it already: templates are usually simple text files. However, there is more than simple copying involved. If you have some file(s) in the directory you specified as `ABSOLUTE_PATH`, as was described in subsection 5.1.1, you will have to navigate your file manager to this location. Otherwise it is now time to create the specified path and copy files from the existing DDKWizard template or create new ones.

Into this folder copy any files you want to have in the new projects created from your template (apart from `.vsproj` files, of course). There is only one thing to keep in mind. Whenever you call the file `PROJECT_NAME.something` it will be named after the project with the suffix (file extension) `“.something”`.

Furthermore, text files are subject to some pre-processing when being copied into the folder you selected for the project. See the following section.

5.3 The “user variables”

The pre-processing replaces certain variables which are all defined by DDKWizard or, in case of `DDKWIZ_USERVARIABLE_*` by you, with the content of the respective variables. To achieve this, give the variable in the following form

```
[!output VARIABLE_NAME]
```

Here the list of variables. Please note, that especially the ones starting with `OVERRIDE*` are really of limited use only.

- `DDKBUILD_COMBOBOX`
The *value* of the combo-box which offers the selection of `DDKBUILD` scripts. Currently only `ddkbuild.cmd` and `ddkbuild.bat`.
- `DDKWIZ_USERVARIABLE_AUTHOR` and `DDKWIZ_USERVARIABLE_AUTHOR_C`
`DDKWIZ_USERVARIABLE_COMPANY` and `DDKWIZ_USERVARIABLE_COMPANY_C`
`DDKWIZ_USERVARIABLE_WEBSITE` and `DDKWIZ_USERVARIABLE_WEBSITE_C`
Values of the respective user variables as defined in the INI file (if you have support for this enabled, i.e. by default not prior to VS 2005).
Note: the variables whose names end in `_C` contain a version of the value that can be used in macros and so on. It has certain characters escaped which would otherwise cause unintended behavior.
- `OVERRIDEDDKBUILD_TEXT`
Name (and optionally path) to `DDKBUILD`. Of course this could be just some third-party script with compatible command line options. It's up to you.
- `OVERRIDE*BASE_TEXT` where `*` may be `WXP`, `WNET`, `WLH` or `W7`
I can not imagine where these would be useful within the source files of a created project, but they will only be defined if you use Visual Studio 2005 or later and have support for property sheets.
They are the base directories for the DDKs/WDKs that can be overridden in the project creation dialog.
- `PROJECT_DATE` and `PROJECT_YEAR`
The date when the project was created in ISO format (`YYYY-MM-DD`) and the year from the date (useful for copyright notices).

- **PROJECT_FILENAME**
Name of the main source file, i.e. project name with ending `.c` or `.cpp`.
- **PROJECT_NAME**
Name of the project without `.vcproj`.
- **PROJECT_PREFIX**
A prefix that is all uppercase and has been derived from the project name. It will not contain any characters which would be unsuitable for function or variable names unless your project name starts with a number ;-). Thus they can be used for the named purposes.

5.4 Please contribute

If you have created your own custom project template and the policies of your company don't stand against it, please contribute them. However, I will only take contributions that will allow the users to do anything with the created projects, i.e. the finalized automatically created project files should be under public domain.

Of course due credit will be given to the contributor. If enough people come up with their own templates, I'm going to create an updater that will be able to offer a selection of available templates and download them from the DDKWizard website.

Chapter 6

Frequently Asked Questions (FAQ)

- **How to create browse information for a project?**

In the SOURCES file you will find the following line:

```
#BROWSER_INFO=1
```

Just uncomment this line to force BUILD to create the browse information for your project. To remove the comment, remove the hash mark (#).

- **How to override the browse file path?**

In your SOURCES file set the symbol BROWSERFILE to the path. Of course you can incorporate variables there (e.g. \$(0) - that is the letter "O").

- **How to override or set C defines?**

Nothing easier than that. Modify the line which starts with C_DEFINES in your SOURCES file to your liking. The syntax is the same as on the command line, i.e. to incorporate previous settings of C_DEFINES and define the symbols UNICODE and _UNICODE use this:

```
C_DEFINES=$(C_DEFINES) /DUNICODE /D_UNICODE
```

- **What is the advantage of using DDKWizard-created Win32 projects?**

The projects created by DDKWizard use a DDK compiler/linker. Luckily, although the newer "Visual" products from Microsoft don't support it anymore, the DDK can link Win32 applications against the MFC 4.x libraries and the original MSVCRT libraries. The advantage should be clear now. You will not have to deploy the newer DLLs for the new MFC versions and no updated CRT DLL either. Consequently any program built this way will run - without extra files - on many legacy systems and will also be smaller in size.

Trivia: the headers in the DDK take the improved standard compliance of the DDK compiler into account. Also a nice way to migrate or just recompile old VC6 projects.

Note: there is a caveat. Newer DDKs/WDKs set certain fields in the PE header of the built binaries strict enough to make those Windows versions that care refuse loading it. Although this only happens, if the target platform is newer than the operating system on which you run the binary, it can lead to some initial confusion.

- **What the heck is CUI?**

Some people know it as CLI or *Command Line Interface* - I personally prefer CUI or *Console User Interface* as opposed to GUI or *Graphical User Interface*.

- **I get strange errors, what can I do?**

The first thing to do would be to check whether you can find the cause yourself. However, if there are errors similar to "file not found" in the output of DDKBUILD, the cause could be, that one of

the scripts (your customized build scripts or those included in the DDK) don't like long path names. That is, path names which exceed the 8.3 DOS file naming conventions. The DDK tools do not like long file names and appear to get confused occasionally. `ddkbuild.cmd` addresses this issue with version 7.0RC2 and later. If all fails, you might want to consider contacting me ;-).

- **What DDK (WDK) should I use?**

In general I would recommend you use the latest available DDK, if possible. However, there are a few limitations. Let us consider your target platform is NT 4.0, your only choice for a DDK which supports it *officially*, would be the NT4 DDK. It is well possible to build drivers compatible with Windows NT 4.0 using a newer DDK and setting Windows 2000 as the target platform while being careful about the kernel functions being used.

Furthermore, all DDKs up to and including the Windows 2000 DDK, were dependent on an external compiler and linker. The Windows XP DDK was the first to address this issue. Neither DDKWizard nor DDKBUILD offer any ways to make this part easier. In fact the NT4 DDK is deprecated for the newest DDKBUILD and was never supported by DDKWizard anyway, the Windows 2000 DDK support has been dropped since DDKWizard 1.3.0.

Here is a list of targets supported *by the DDKs* along with the base directory environment variable as described in section 1.1:

- **Windows NT 4.0 DDK (NT4BASE)**

This DDK requires an external compiler and linker. It can be used to compile drivers targeted at the Windows NT 4.0 platform. As far as I am aware, support for all processor platforms that were officially supported by Windows NT 4.0 was included (e.g. PPC, Alpha ...).

- **Windows 2000 DDK (W2KBASE)**

This DDK requires an external compiler and linker. It can be used to compile drivers targeted at the Windows 2000 platform including x86 and IA-64 (“Itanium”).

Note: To compile drivers for Windows 2000 on IA-64 (“Itanium”), this is your only option.

- **Windows XP DDK (WXPBASE)**

This DDK can be used to compile drivers targeted at the Windows 2000 platform but only on x86 as well as drivers for Windows XP (x86 and IA-64).

Note: The Windows XP x64 edition is based on Windows 2003 Server and therefore not supported by this DDK.

- **Windows 2003 Server DDK (WNETBASE)**

This DDK can be used to compile drivers targeted at the Windows 2000 platform but only on x86 as well as drivers for Windows XP (x86, x64 and IA-64) and Windows 2003 Server (x86, x64 and IA-64).

Note: Use the x64 configuration type for Windows 2003 Server to build a driver compatible with Windows XP x64.

- **Windows Vista/Windows 2008 Server WDK (WLHBASE)**

With this WDK (formerly “Longhorn Driver Kit”) you can target almost all of the previously mentioned platforms. Support for Windows 2000 does not include IA-64 (“Itanium”).

Note: Use the x64 configuration type for Windows 2003 Server to build a driver compatible with Windows XP x64.

- **Windows 7/Windows 2008 Server R2 WDK (W7BASE)**

With this WDK you can target almost all of the previously mentioned platforms. Support for Windows 2000 was apparently dropped, though.

Note: Use the x64 configuration type for Windows 2003 Server to build a driver compatible with Windows XP x64.

- **Why are you so lazy, Oliver?**

You use DDKWizard and *still* complain? Tss tss ...

6.1 Important change in version 1.3.0

Support for the Windows 2000 DDK was dropped from DDKWizard.

6.2 Important change in version 1.1.1b

In previous versions (i.e. prior to 1.1.1b), projects created by DDKWizard contained a bug. This bug *could* cause a BSOD in the worst case. To make a long story short, I returned a value using the dereferenced pointer from a completed IRP. Not good ;-) ... this is fixed.

Please note that you have to fix the issue manually by yourself for older projects created with affected DDKWizard versions. To do this, check all the dispatch functions of your driver for the following line:

```
return Irp->IoStatus.Status;
```

Note that this `return` statement needs to reference a variable on the stack, not a completed IRP. So the correct version would look something like this:

```
NTSTATUS status; // = whatever default
// ... whatever actions
status = Irp->IoStatus.Status;
// Complete the IRP
return status;
```

Other variants are of course possible, but you get the point.

6.3 Build script use cases

In subsection 1.2.1, I introduced you to the build scripts that can be used with `ddkbuild.cmd`. Now let us discuss some use cases.

`ddkbldeenv.cmd` should be used to override any of the base directory variables, but in fact you could even override some DDKBUILD-internal variables. I cannot recommend this, though, since I may change the logic in the main script one day and your `ddkbldeenv.cmd` could break in that case.

Example (overrides `WLHBASE`):

```
@echo off
set WLHBASE=X:\WINDDK\6000
```

`ddkprebld.cmd` is being called just before the actual call to the `BUILD` utility of the DDK. Therefore you can inject any kind of actions that you need to have done at this point. If it doesn't matter whether at this point or earlier you *may choose between* this script and `ddkbldeenv.cmd`. Example (sets a variable used in `SOURCES`):

```
@echo off
set ENGINEBASE=X:\MyProduct\Engine
```

`ddkpostbld.cmd` could be used for any step after the build has finished. Typical tasks at this stage would be to move the binary files to some other location, to code-sign them or to perform other actions involving them.

Chapter 7

Figures

Figure 7.1: Dialog to set environment variables

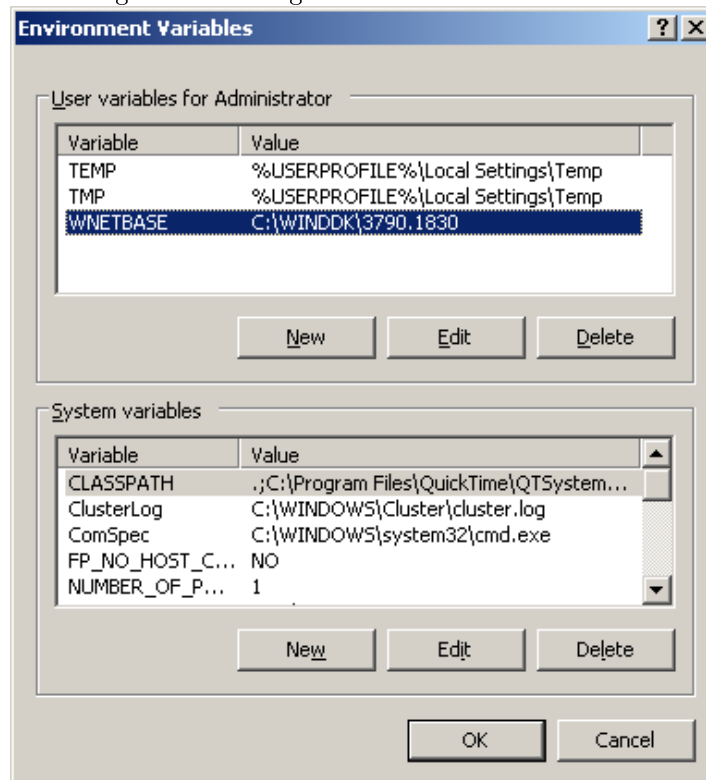
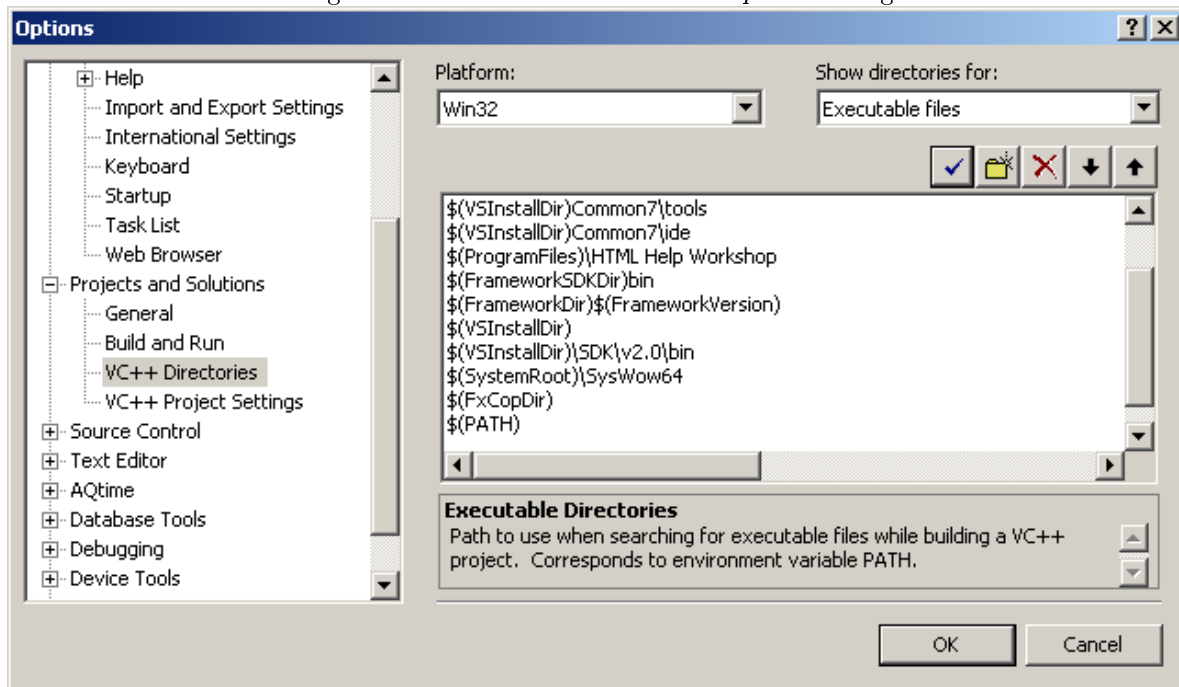


Figure 7.2: The Visual Studio 2005 *Options* dialog

Contents

Preface	1
Compatibility	1
Prerequisites	2
How to use this manual	2
Donations & contributions	2
Website	2
An advice	2
License	3
Redistributing DDKW ^{izard}	3
1 Setup of DDKBUILD	4
1.1 ddkbuild.bat	4
1.2 ddkbuild.cmd	5
1.2.1 But, ddkbuild.cmd is even cooler ;-)	5
1.2.2 Auto-detection and global variables in ddkbuild.cmd	6
2 Usage of the wizard	7
2.1 Installing the wizard	7
2.2 Uninstalling the wizard	7
2.3 Wizard project types	8
2.4 Projects and configuration created by the wizard	10
2.5 Property sheets (VS 2005 or later)	12
3 Configuration of the wizard	14
3.1 Compatibility limitation(s)	14
3.1.1 Workarounds?!	15
3.2 The INI file explained	15
3.2.1 Special values	15
3.2.2 Value types	15
3.2.3 Section [General]	16
3.2.4 [Project.*] sections	16

3.2.5	<i>Value name</i> listbox.DDK_CHOICE	16
3.3	Is the configuration persistent?	17
4	Tech-speak ...	18
4.1	Custom wizards	18
4.2	./HTML/1033/default.htm	18
4.3	./Scripts/1033/default.js	18
5	Creating your own custom project templates	19
5.1	Registration files	19
5.1.1	YourTemplate.vsz - where are your template files?	19
5.1.2	YourWizard.vmdir - registering with Visual Studio	19
5.2	Your templates	20
5.3	The “user variables”	20
5.4	Please contribute	21
6	Frequently Asked Questions (FAQ)	22
6.1	Important change in version 1.3.0	24
6.2	Important change in version 1.1.1b	24
6.3	Build script use cases	24
7	Figures	25
	Environment variables	25
	Options dialog	26