

Study Design:

Clusters:

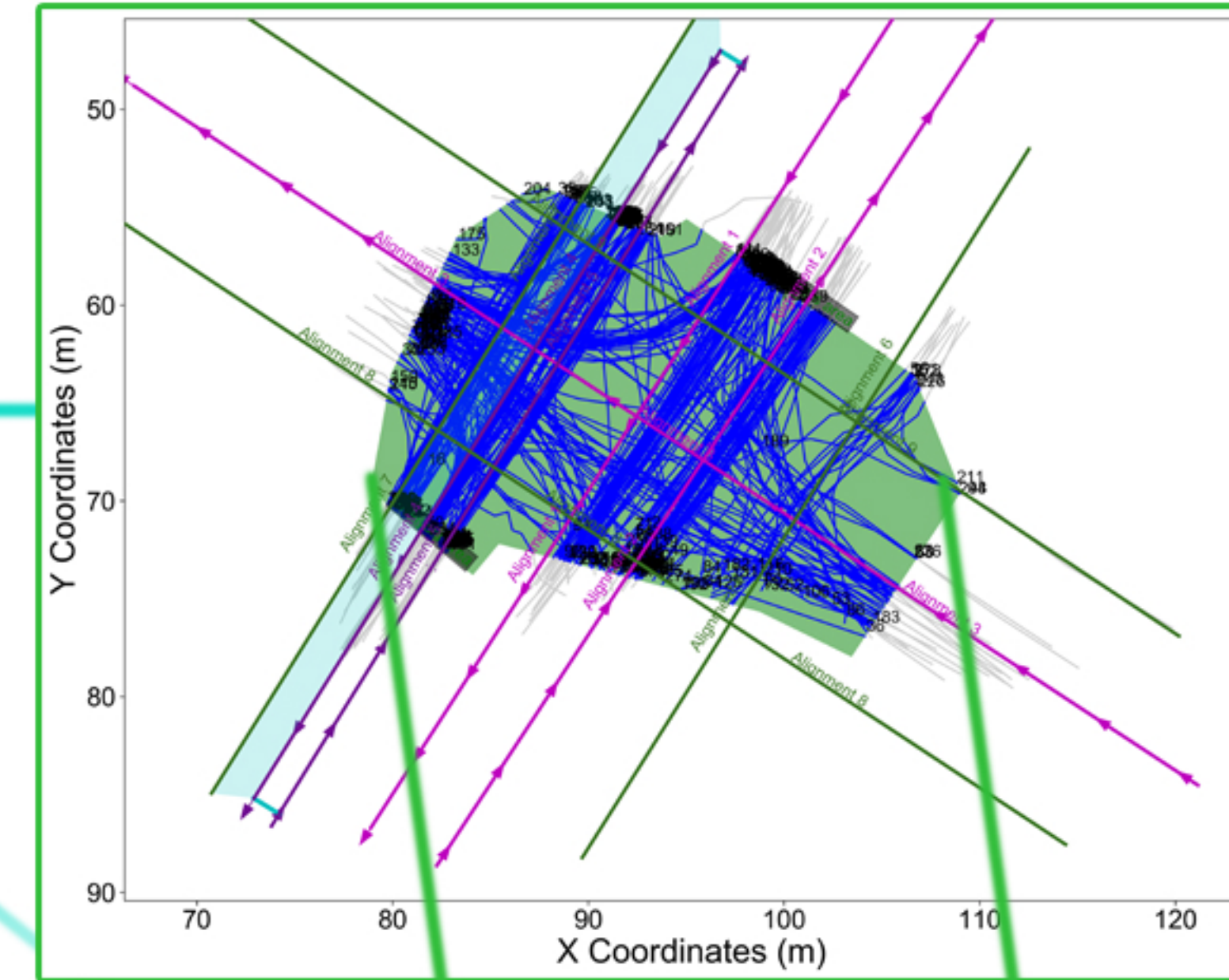
Selection of analyses for comparison *between* each other

tvaLib: --cluster

Analysis:

Groups multiple site-analysis together, i.e. analysis of behaviour as a whole across several sites

tvaLib: --analysis



Site-analysis:

Selects trajectories at a specific site to fulfill study's objectives

tvaLib: -b

Database Management:

GP0R0002.MP4	2016-06-14 8:19 PM	VLC media file (.mp4)	1,946,832 KB
GP010002.MP4	2016-06-14 8:36 PM	VLC media file (.mp4)	1,946,636 KB
GP020002.MP4	2016-06-14 8:54 PM	VLC media file (.mp4)	1,948,577 KB
GP030002.MP4	2016-06-14 9:11 PM	VLC media file (.mp4)	1,948,570 KB
GP040002.MP4	2016-06-14 9:29 PM	VLC media file (.mp4)	1,948,591 KB
GP050002.MP4	2016-06-14 9:47 PM	VLC media file (.mp4)	1,948,528 KB
GP060002.MP4	2016-06-14 10:05 PM	VLC media file (.mp4)	1,948,598 KB
GP070002.MP4	2016-06-14 10:22 PM	VLC media file (.mp4)	1,948,548 KB
GP080002.MP4	2016-06-14 10:40 PM	VLC media file (.mp4)	1,946,652 KB
GP090002.MP4	2016-06-14 10:57 PM	VLC media file (.mp4)	1,946,625 KB
GP100002.MP4	2016-06-14 11:15 PM	VLC media file (.mp4)	1,948,504 KB
GP110002.MP4	2016-06-14 11:33 PM	VLC media file (.mp4)	1,946,640 KB
GP120002.MP4	2016-06-14 11:50 PM	VLC media file (.mp4)	1,948,564 KB

Sequence:

Video file slice
Start time/Duration

tvaLib: -f



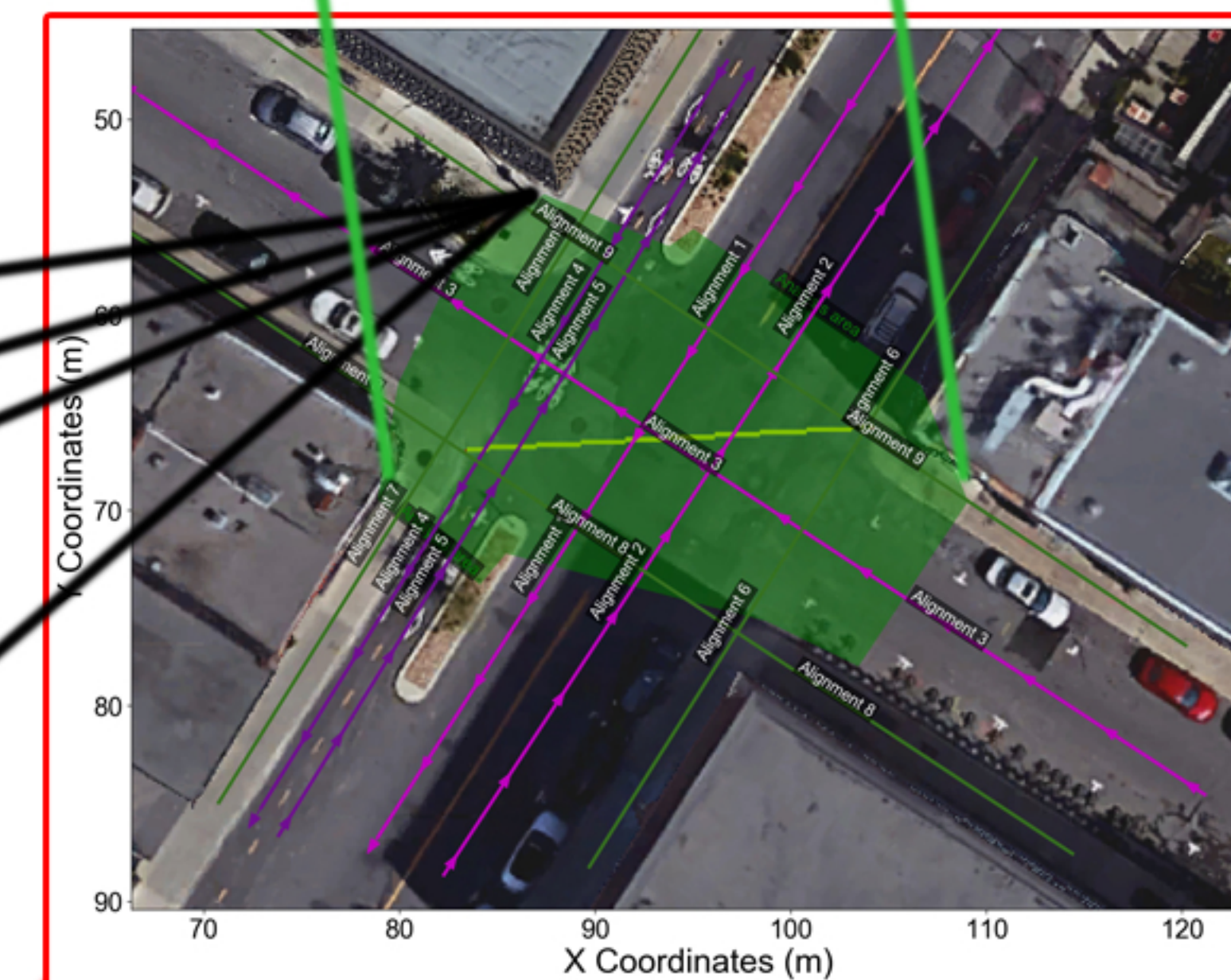
Camera-view:

Camera orientation
Camera instalation

tvaLib: -c

Camera type:

Resolution
Framerate
Distrotion/lens



Site:

Physical location
Alignments
Location-specific factors

tvaLib: -s

