

Magent for Year 10 Maths

RCM6842 Mid-Term Evaluation

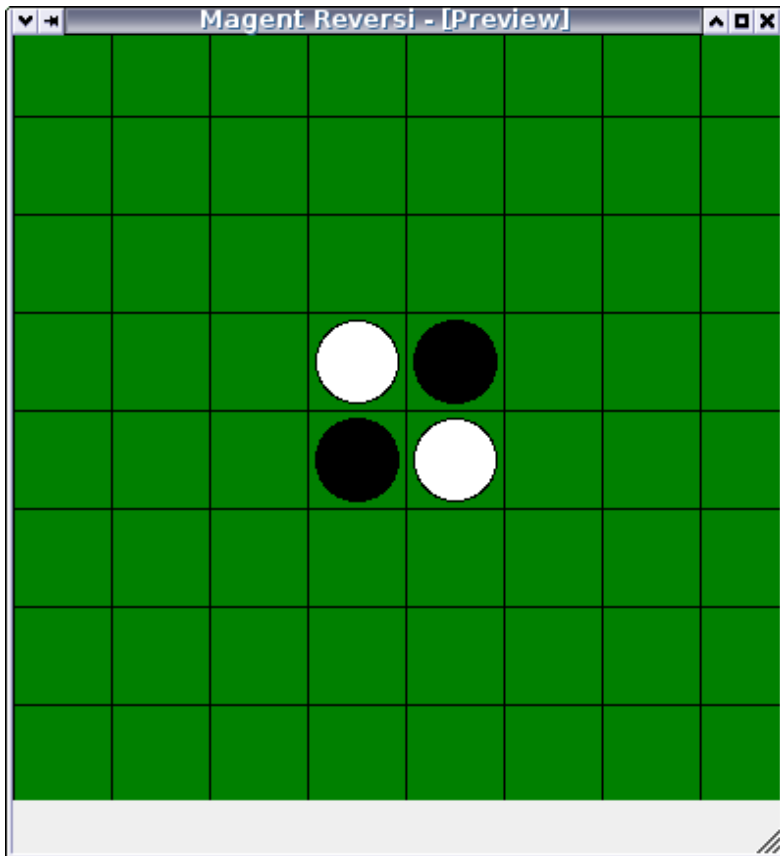
Minh Van Nguyen
nguyenminh2@gmail.com

2008-10-06

- Loading Magent



- First reversi game



Game Help

Consider the following figure:

A graph of a parabola opening upwards on a Cartesian coordinate system. The x and y axes are blue. The parabola is red and has its vertex in the lower half-plane, intersecting the x-axis at two points and the y-axis at a negative value.

The above figure is a graph of which function?

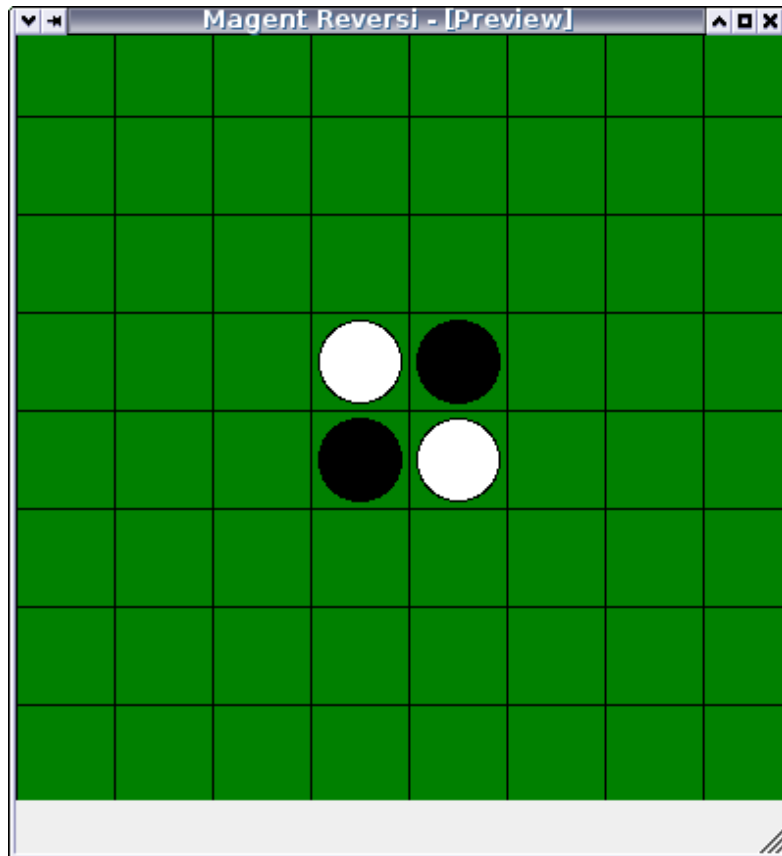
Choose an answer

- linear function
- quadratic function
- cubic function
- logarithmic function
- sine function
- cosine function

Submit

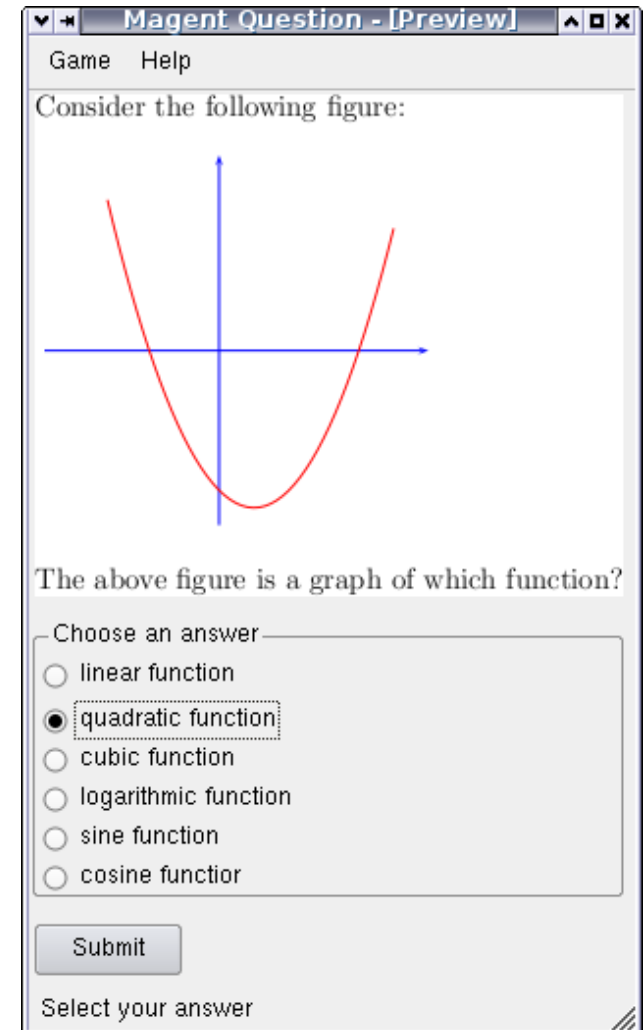
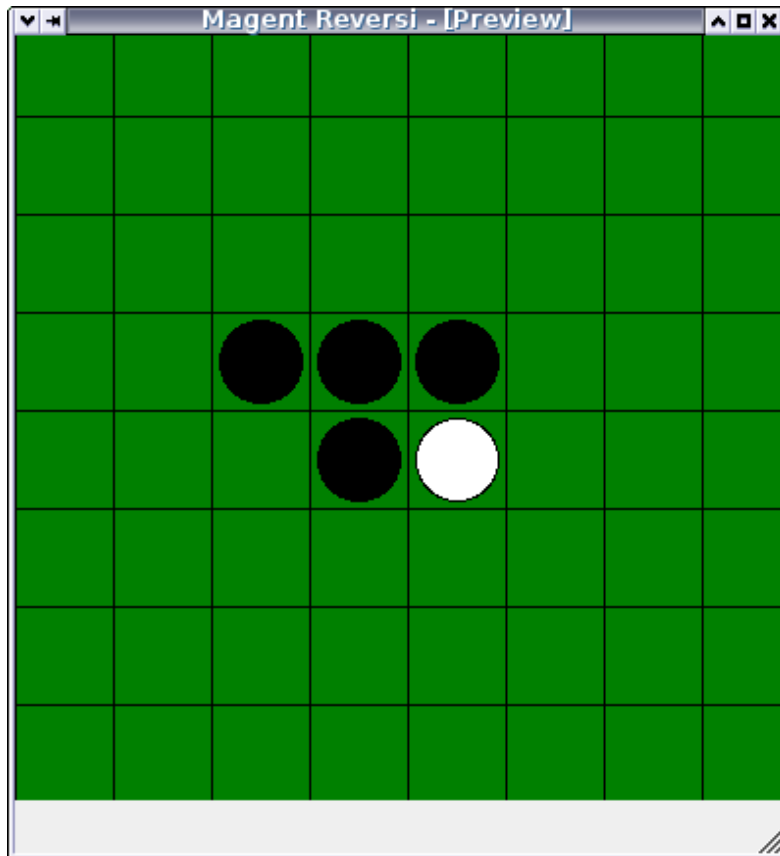
Select your answer

- Valid answer

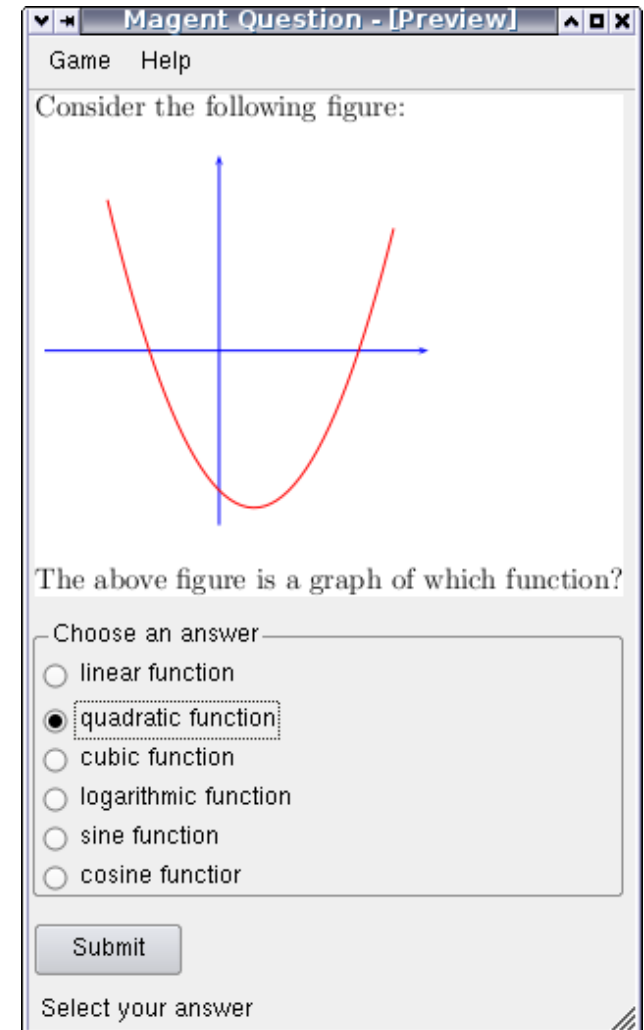
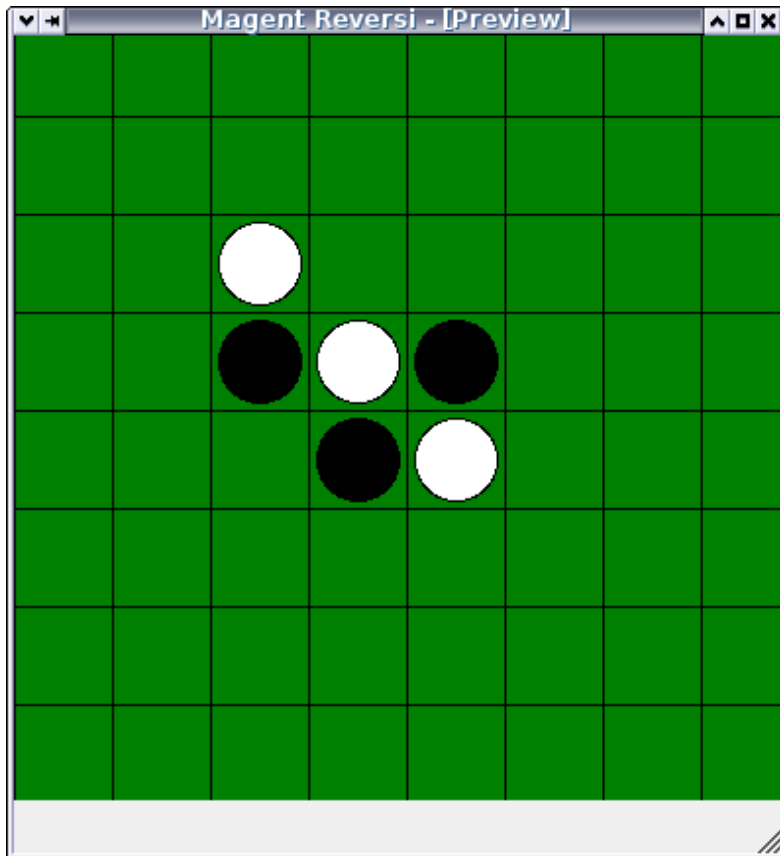


A screenshot of a math question interface titled "Magent Question - [Preview]". The interface includes a "Game" and "Help" menu. The text reads "Consider the following figure:" followed by a graph of a red parabola opening upwards on a blue coordinate system. Below the graph, the text asks "The above figure is a graph of which function?". A list of options is provided with radio buttons: "linear function", "quadratic function" (which is selected and highlighted with a dashed border), "cubic function", "logarithmic function", "sine function", and "cosine function". A "Submit" button is located below the list. At the bottom, it says "Select your answer".

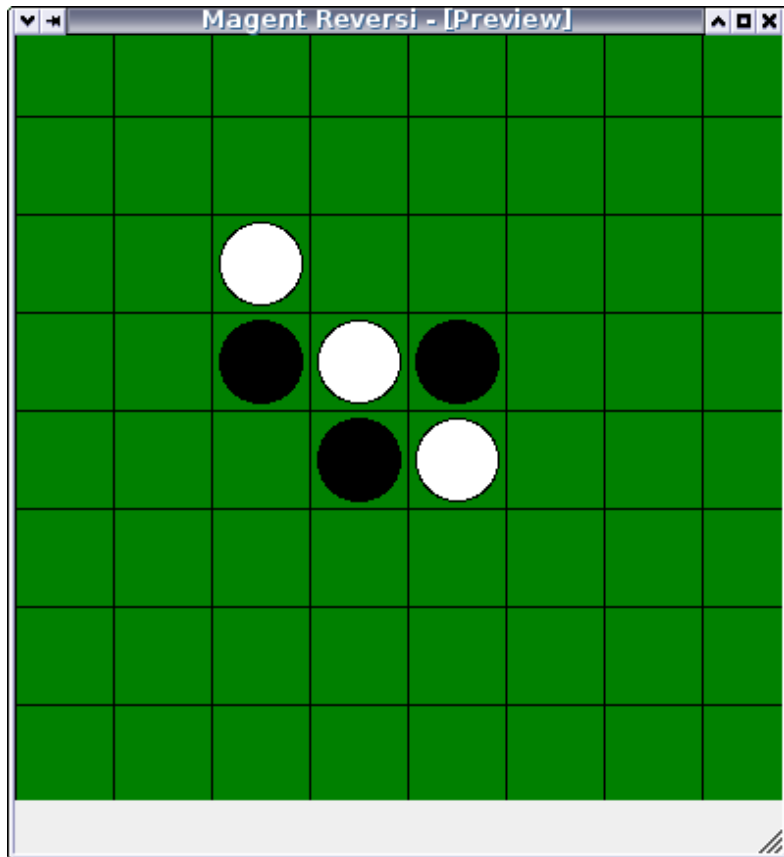
- Valid answer --- human move



- Valid answer --- computer move

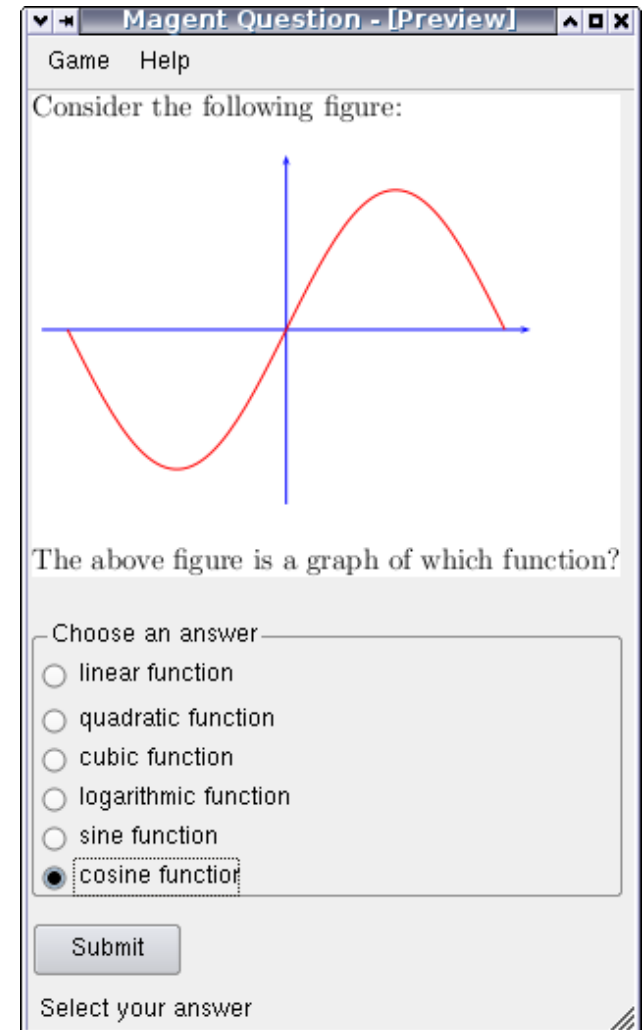
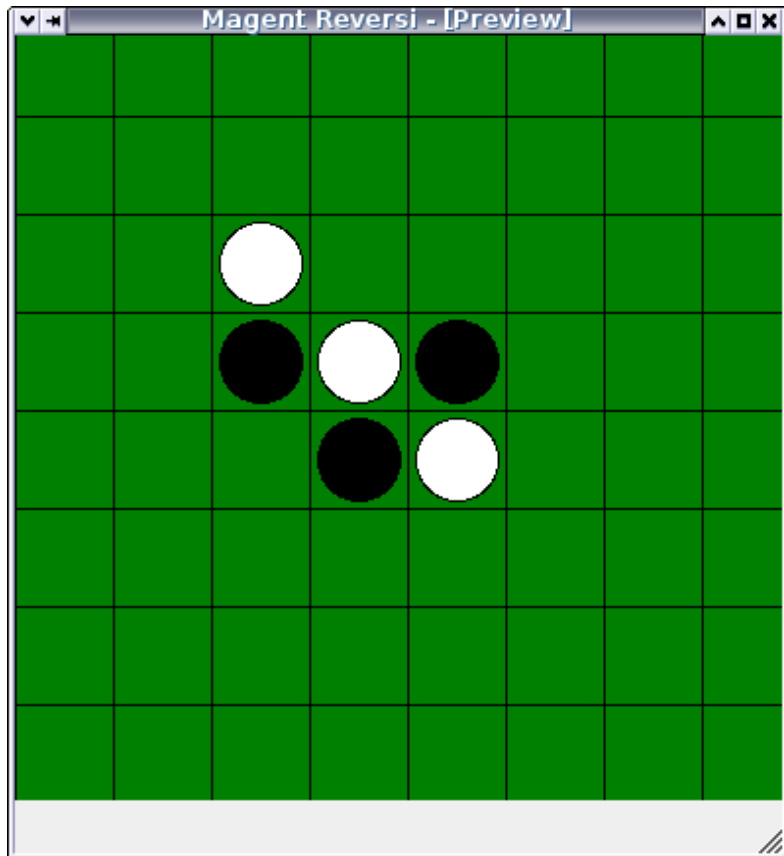


- Invalid answer

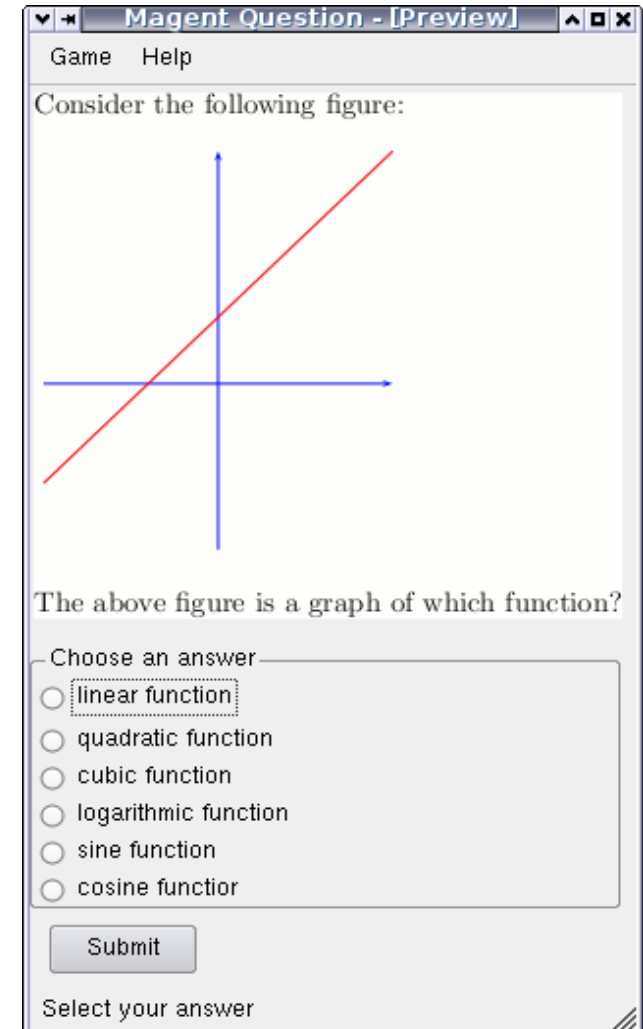
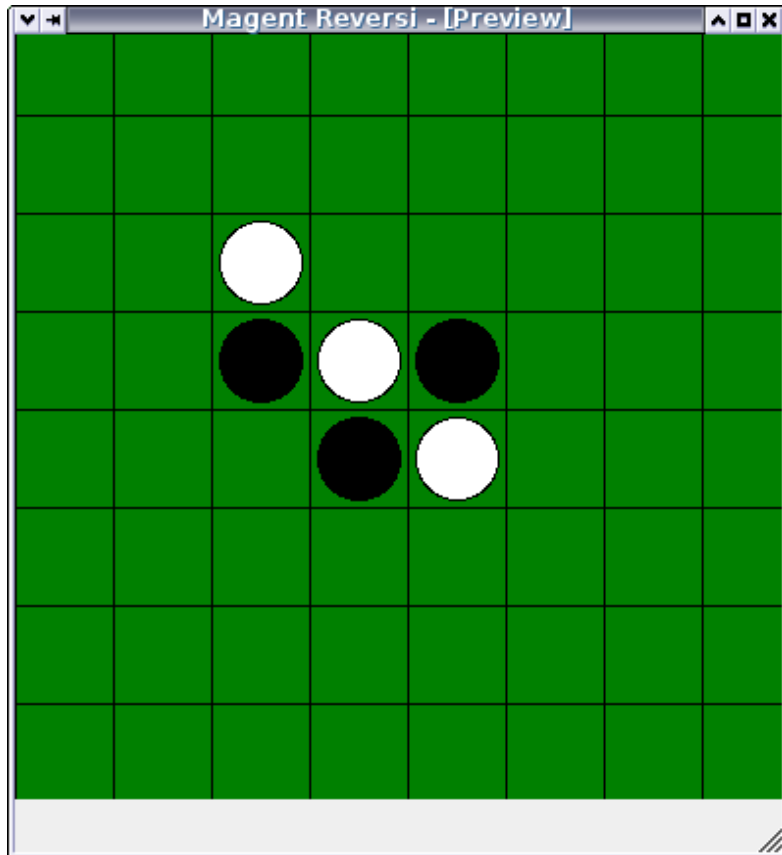


A screenshot of a math question interface titled "Magent Question - [Preview]". It includes a "Game" and "Help" menu. The text says "Consider the following figure:" followed by a graph of a red sine wave on a blue coordinate system. The wave passes through the origin (0,0), has a positive peak, and a negative trough. Below the graph, the text asks "The above figure is a graph of which function?". There are six radio button options: "linear function" (selected), "quadratic function", "cubic function", "logarithmic function", "sine function", and "cosine function". A "Submit" button is at the bottom, and the text "Select your answer" is at the bottom right.

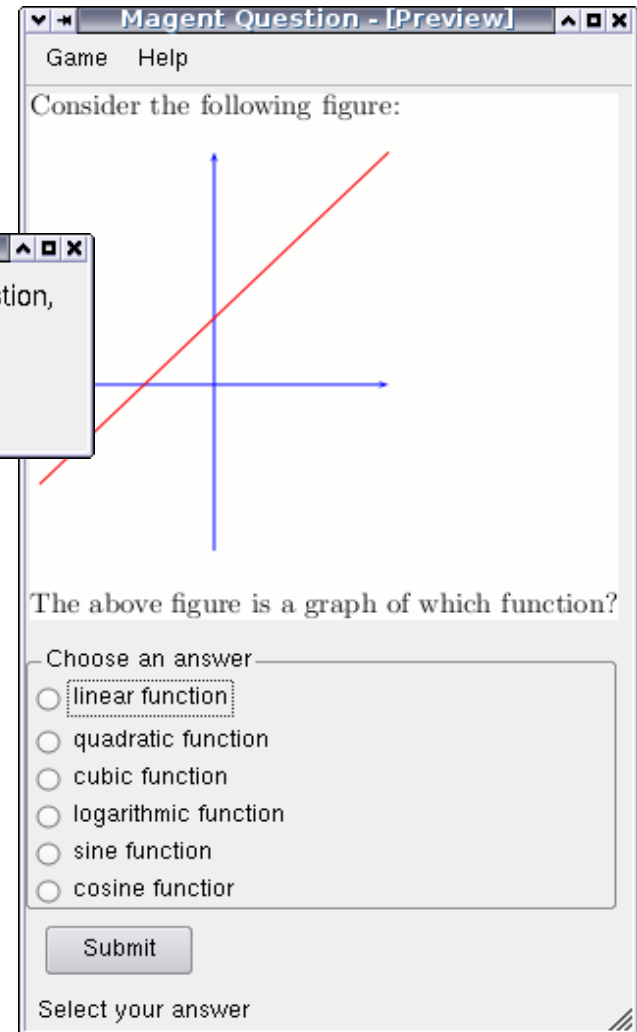
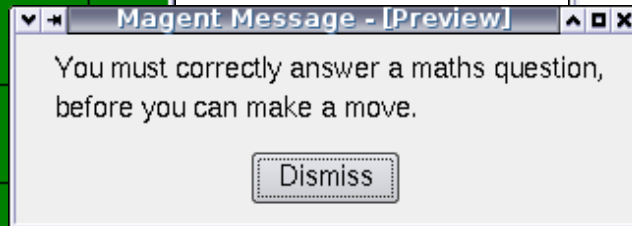
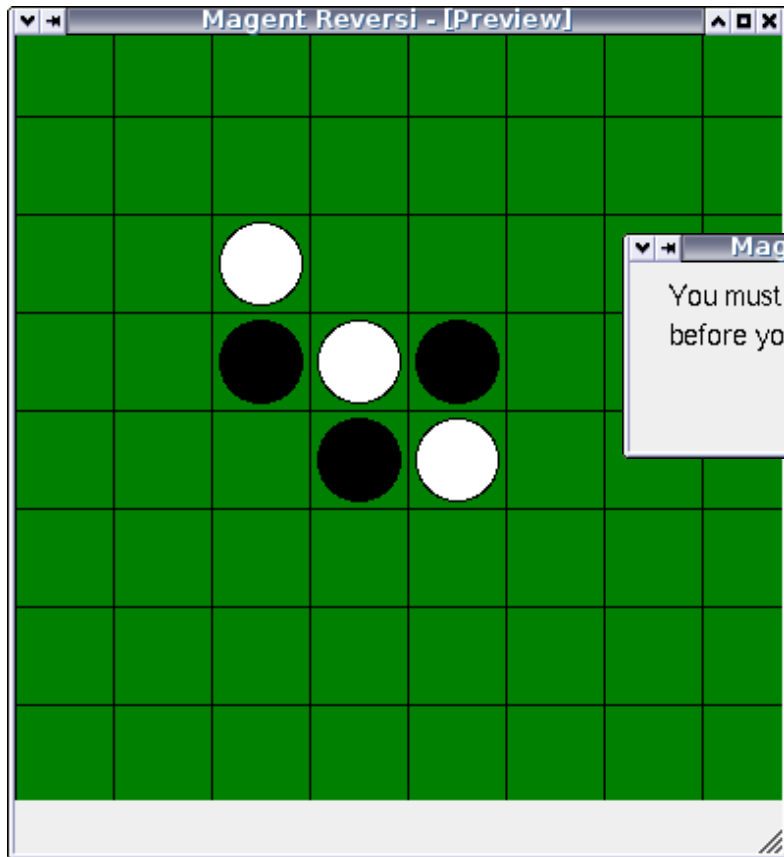
- Invalid answer --- submit answer



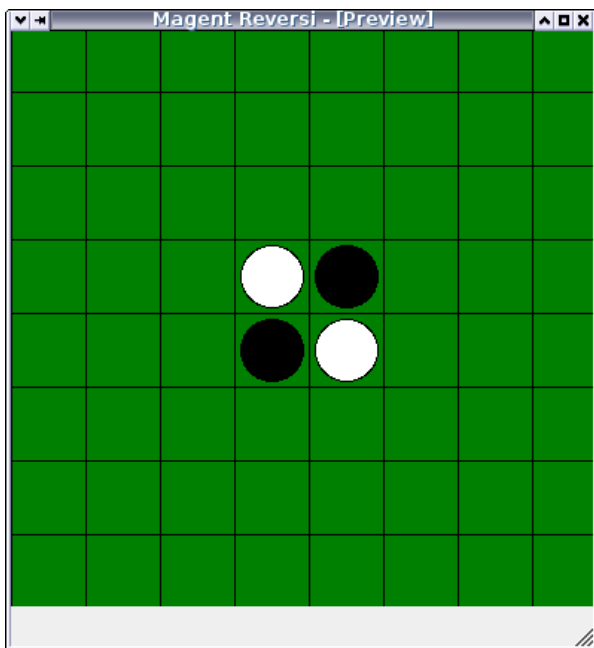
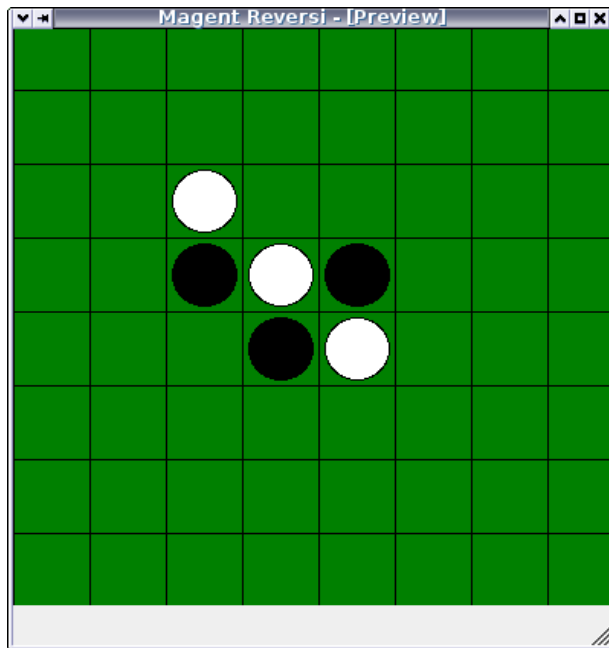
- Invalid answer --- new question



- Invalid answer --- new question



- New (reversi) game



Magent Question - [Preview]

Game Help

Consider the following figure:

The above figure is a graph of which function?

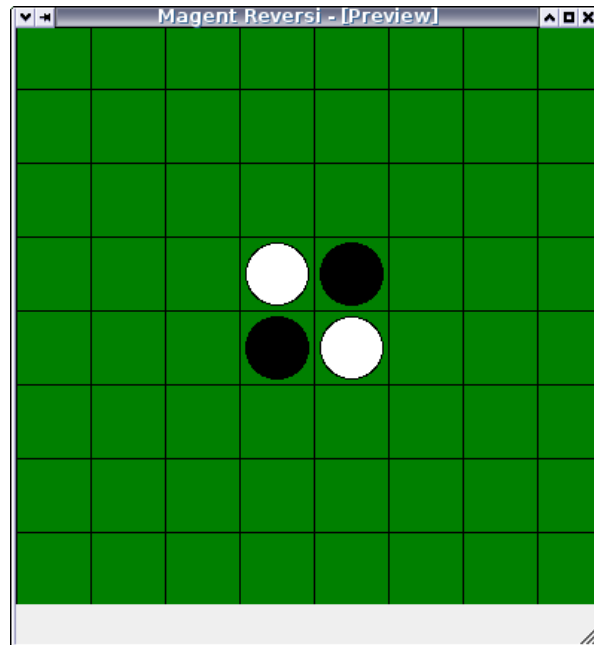
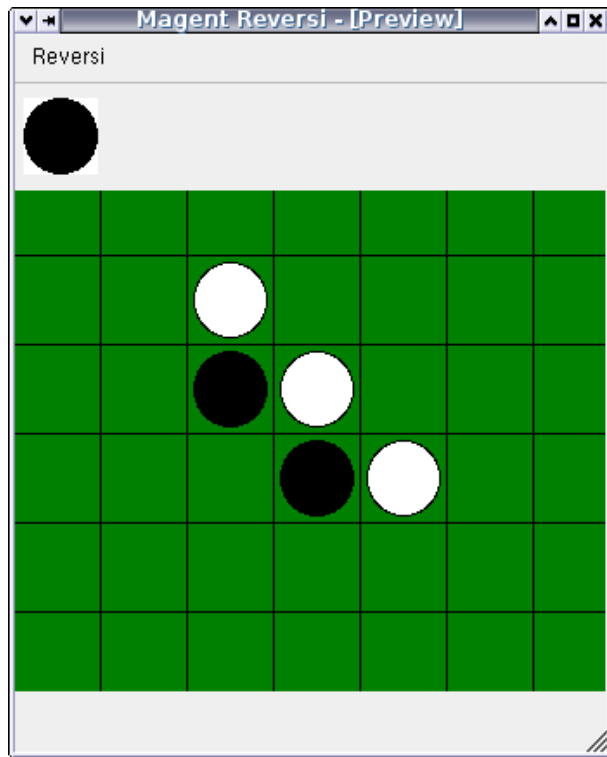
Choose an answer

- linear function
- quadratic function
- cubic function
- logarithmic function
- sine function
- cosine function

Submit

Select your answer

- Snatch token



Game Help

Consider the following figure:

The above figure is a graph of which function?

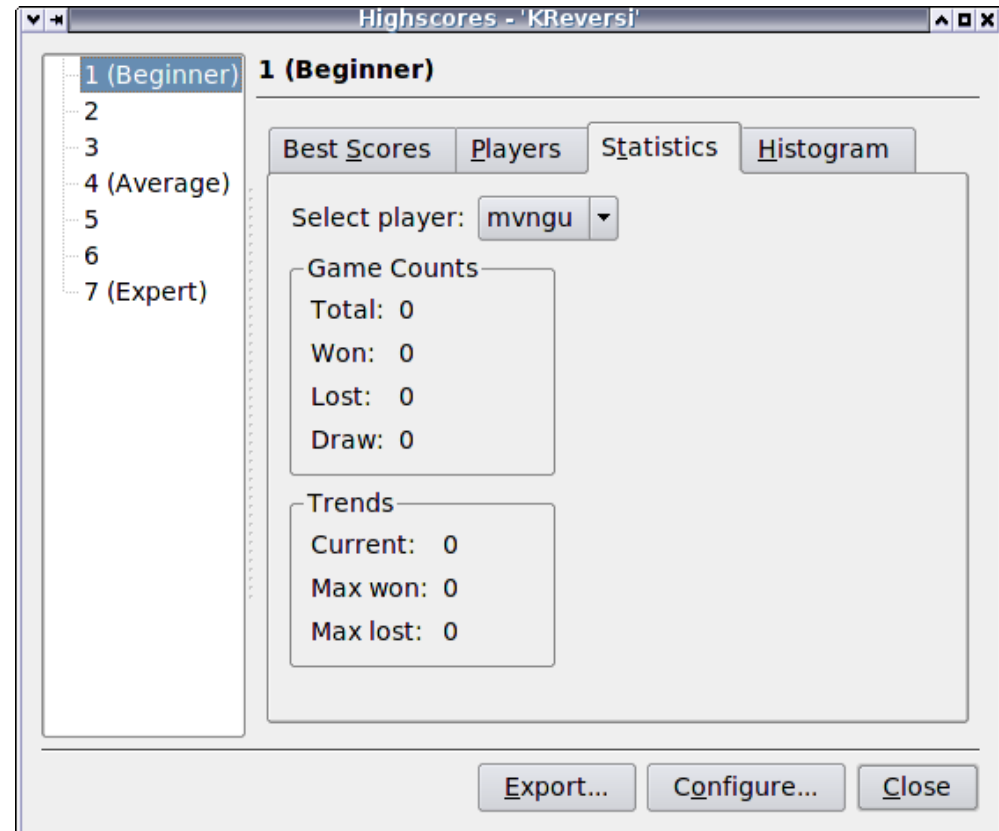
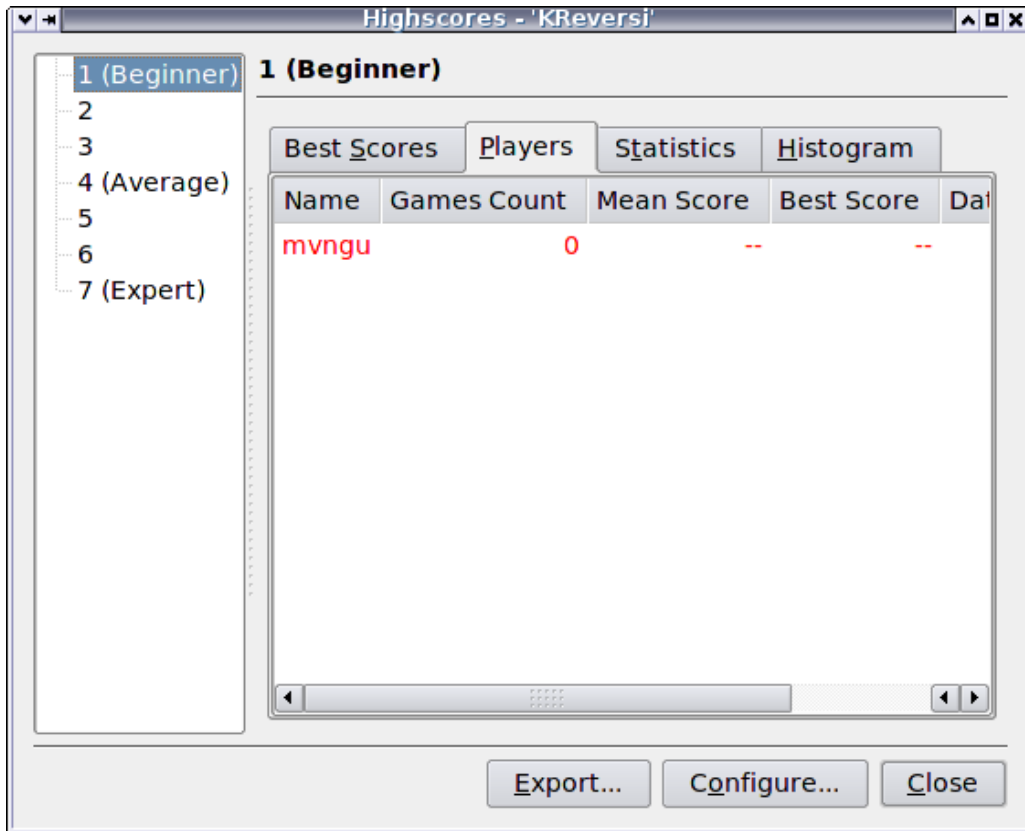
Choose an answer

- linear function
- quadratic function
- cubic function
- logarithmic function
- sine function
- cosine function

Submit

Select your answer

- Score board



Configuration file

- Token snatch interval
- Reversi GUI instances