

B2B API Mocking services

Environment : <http://localhost/b2b-mock>

WSDL : <http://localhost/b2b-mock?wsdl>

#	BOOKING FLOW STEP	Status	PARAMETER (XPATH expression)	VALUE	DESCRIPTION	RESULT
1	search	Deployed	//searchRequest/itinerarySearchRequest/segmentRequests[1]/departure[1]/@iataCode	SHA	Route SHA-MAD Round trip 1 ADULT CABIN CLASS = TOURIST date1 = 2014-03-25 date2 = 2014-06-04	currency = EUR locale = en searchId = 5093572865
2	search	Deployed	//searchRequest/itinerarySearchRequest/segmentRequests[1]/departure[1]/@iataCode	DUB	Route DUB-MAD Round trip 1 ADULT CABIN CLASS = TOURIST date1=2014-03-25 date2=2014-06-04	currency = EUR locale = en searchId = 5093572105
3	search	Deployed	//searchRequest/itinerarySearchRequest/segmentRequests[1]/departure[1]/@iataCode	PAR	Route PAR-BCN Round trip 1 ADULT CABIN CLASS = TOURIST date1=2014-03-25 date2=2014-06-04	currency = EUR locale = en searchId = 5093572333
4	search	Deployed	//searchRequest/itinerarySearchRequest/segmentRequests[1]/departure[1]/@iataCode	BCN	Route BCN-SHA One way 1 ADULT, 1 INFANT, 1 CHILD CABIN CLASS = TOURIST date1=2014-03-25	currency = EUR locale = en searchId = 5093582065
5	search	Deployed	//searchRequest/itinerarySearchRequest/segmentRequests[1]/departure[1]/@iataCode	LIS	Route BCN-LIS One way 1 ADULT, 1 INFANT, 1 CHILD	currency = EUR locale = en searchId = 6673015246

					CABIN CLASS = TOURIST	
6	createShoppingCart	Deployed	//selectionRequest/@searchId	6673015246	Route BCN-LIS One way 1 ADULT, 1 INFANT, 1 CHILD CABIN CLASS = TOURIST	shopping cart created successfully
7	addPersonalInfoToShoppingCart	Deployed	//personalInfo/@bookingId	428451819	Route BCN-LIS One way 1 ADULT, 1 INFANT, 1 CHILD CABIN CLASS = TOURIST	passenger info added successfully
8	confirmBooking	Deployed	//bookingId	428451819	Route BCN-LIS One way 1 ADULT, 1 INFANT, 1 CHILD CABIN CLASS = TOURIST	BOOKING_CONFIRMED using PREPAY collectionMethod
9	getBookingById	Deployed	//bookingId	428451819	Route BCN-LIS One way 1 ADULT, 1 INFANT, 1 CHILD CABIN CLASS = TOURIST	Booking retrieved correctly with bookingId bookingStatus="CONTRACT" bookingId="428451819" totalPrice="142.92"
10	getBookingByPartnerReference	Deployed	//partnerReferenceId	ctrip01	Route BCN-LIS One way	Booking retrieved correctly with partner referenceId bookingStatus="CONTRACT" bookingId="428451819" totalPrice="142.92"

HOW-TO use mocking services with SOAPUI

1. You can download SOAPUI from <http://sourceforge.net/projects/soapui/files/>

Enterprise / Business & Enterprise / Enterprise / Business Performance Management / SoapUI

SoapUI

★★★★★ (46) [Read Reviews](#) | Last Updated 2014-02-18

 [Download](#)

Windows | Mac | Linux

31.697 Downloads (This Week)

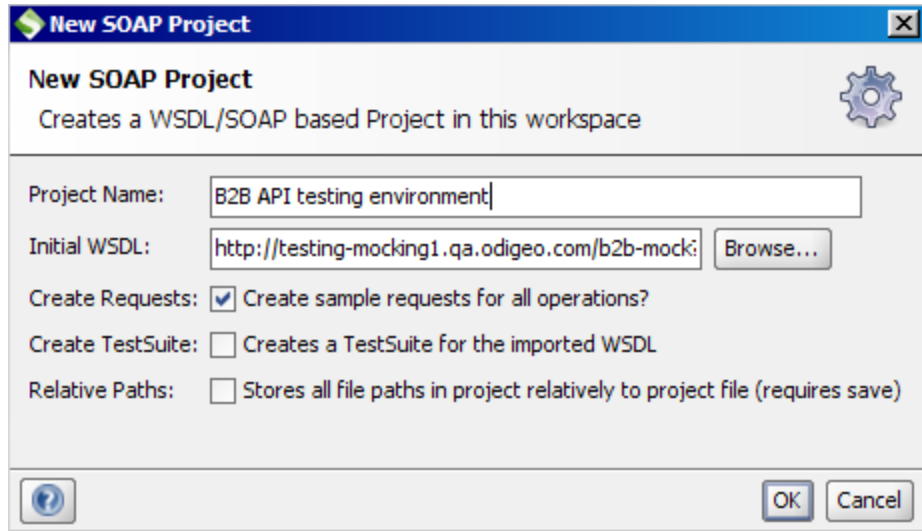
Summary | [Files](#) | Reviews | Support | Wiki | Mailing Lists | Tickets ▾ | News | Browse SVN

Looking for the latest version? [Download SoapUI-x32-4.6.4.exe \(148.6 MB\)](#)

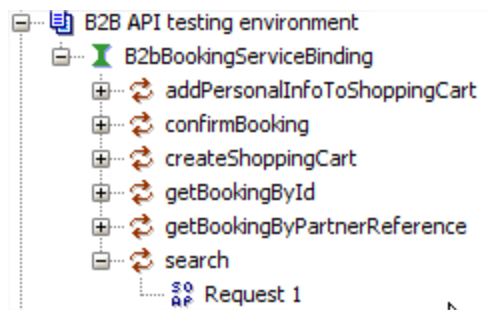
Home 

Name ▾	Modified ▾	Size ▾	Downloads / Week ▾
 soapui	2014-01-14		

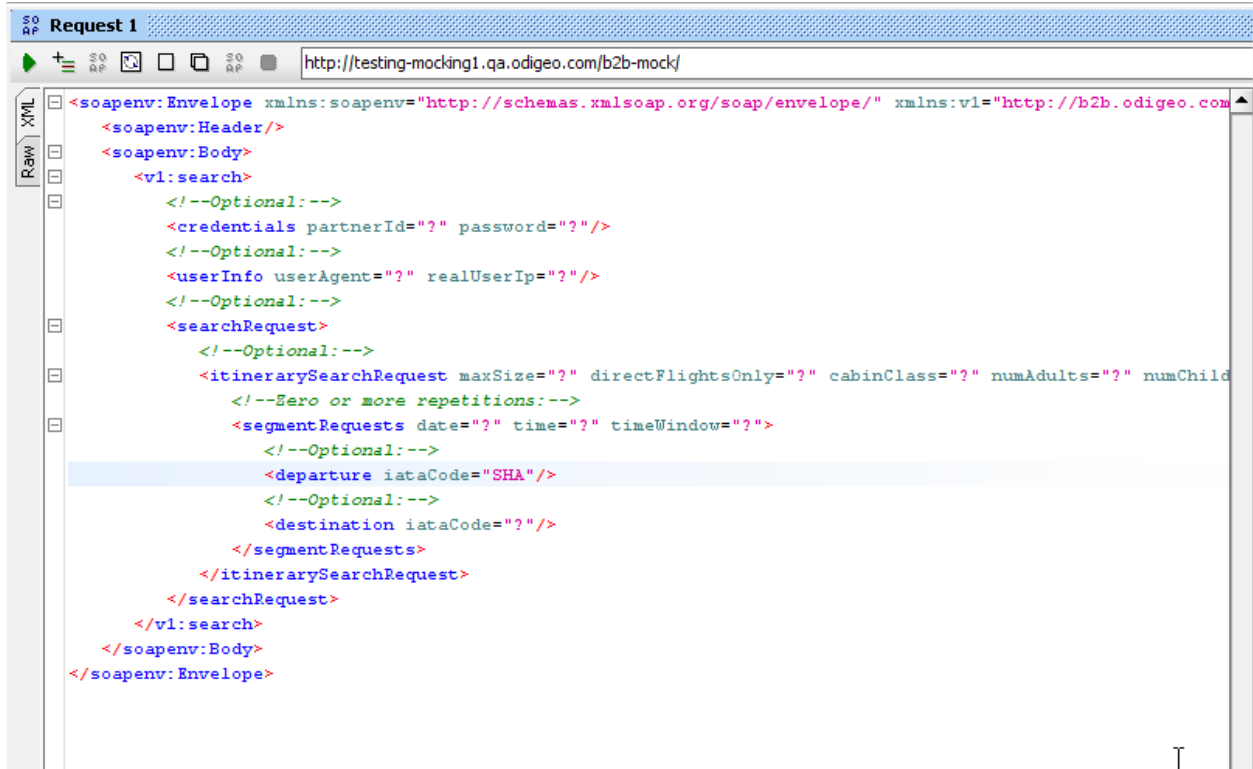
2. Create new SOAP PROJECT. File -> New SOAP Project



3. Create new Search request



4. Set value in departure iataCode



5. Submit request with play button



6. See response in the right panel



See attached request examples

#1

```
<soapenv:Envelope xmlns:soapenv="http://schemas.xmlsoap.org/soap/envelope/"
xmlns:v1="http://b2b.odigeo.com/b2b/ws/v1">
  <soapenv:Header/>
  <soapenv:Body>
    <v1:search>
      <!--Optional:-->
      <credentials partnerId="" password=""/>
      <!--Optional:-->
      <userInfo userAgent="" realUserIp=""/>
      <!--Optional:-->
      <searchRequest>
        <!--Optional:-->
        <itinerarySearchRequest maxSize="" directFlightsOnly="" cabinClass=""
numAdults="" numChildren="" numInfants="">
          <!--Zero or more repetitions:-->
          <segmentRequests date="" time="" timeWindow="">
            <!--Optional:-->
            <departure iataCode="SHA"/>
            <!--Optional:-->
            <destination iataCode=""/>
          </segmentRequests>
        </itinerarySearchRequest>
      </searchRequest>
    </v1:search>
  </soapenv:Body>
</soapenv:Envelope>
```

#2

```
<soapenv:Envelope xmlns:soapenv="http://schemas.xmlsoap.org/soap/envelope/"
xmlns:v1="http://b2b.odigeo.com/b2b/ws/v1">
  <soapenv:Header/>
  <soapenv:Body>
    <v1:search>
      <!--Optional:-->
      <credentials partnerId="" password=""/>
      <!--Optional:-->
      <userInfo userAgent="" realUserIp=""/>
      <!--Optional:-->
      <searchRequest>
        <!--Optional:-->
        <itinerarySearchRequest maxSize="" directFlightsOnly="" cabinClass=""
numAdults="" numChildren="" numInfants="">
          <!--Zero or more repetitions:-->
```

```

    <segmentRequests date="?" time="?" timeWindow="?">
      <!--Optional:-->
      <departure iataCode="DUB"/>
      <!--Optional:-->
      <destination iataCode="?"/>
    </segmentRequests>
  </itinerarySearchRequest>
</searchRequest>
</v1:search>
</soapenv:Body>
</soapenv:Envelope>

```

#3

```

<soapenv:Envelope xmlns:soapenv="http://schemas.xmlsoap.org/soap/envelope/"
xmlns:v1="http://b2b.odigeo.com/b2b/ws/v1">
  <soapenv:Header/>
  <soapenv:Body>
    <v1:search>
      <!--Optional:-->
      <credentials partnerId="?" password="?"/>
      <!--Optional:-->
      <userInfo userAgent="?" realUserIp="?"/>
      <!--Optional:-->
      <searchRequest>
        <!--Optional:-->
        <itinerarySearchRequest maxSize="?" directFlightsOnly="?" cabinClass="?"
numAdults="?" numChildren="?" numInfants="?">
          <!--Zero or more repetitions:-->
          <segmentRequests date="?" time="?" timeWindow="?">
            <!--Optional:-->
            <departure iataCode="PAR"/>
            <!--Optional:-->
            <destination iataCode="?"/>
          </segmentRequests>
        </itinerarySearchRequest>
      </searchRequest>
    </v1:search>
  </soapenv:Body>
</soapenv:Envelope>

```

#4

```

<soapenv:Envelope xmlns:soapenv="http://schemas.xmlsoap.org/soap/envelope/"

```

```

xmlns:v1="http://b2b.odigeo.com/b2b/ws/v1">
  <soapenv:Header/>
  <soapenv:Body>
    <v1:search>
      <!--Optional:-->
      <credentials partnerId="?" password="?"/>
      <!--Optional:-->
      <userInfo userAgent="?" realUserIp="?"/>
      <!--Optional:-->
      <searchRequest>
        <!--Optional:-->
        <itinerarySearchRequest maxSize="?" directFlightsOnly="?" cabinClass="?"
numAdults="?" numChildren="?" numInfants="?">
          <!--Zero or more repetitions:-->
          <segmentRequests date="?" time="?" timeWindow="?">
            <!--Optional:-->
            <departure iataCode="BCN"/>
            <!--Optional:-->
            <destination iataCode="?"/>
          </segmentRequests>
        </itinerarySearchRequest>
      </searchRequest>
    </v1:search>
  </soapenv:Body>
</soapenv:Envelope>

```

#5

```

<soapenv:Envelope xmlns:soapenv="http://schemas.xmlsoap.org/soap/envelope/"
xmlns:v1="http://b2b.odigeo.com/b2b/ws/v1">
  <soapenv:Header/>
  <soapenv:Body>
    <v1:search>
      <!--Optional:-->
      <credentials partnerId="?" password="?"/>
      <!--Optional:-->
      <userInfo userAgent="?" realUserIp="?"/>
      <!--Optional:-->
      <searchRequest>
        <!--Optional:-->
        <itinerarySearchRequest maxSize="?" directFlightsOnly="?" cabinClass="?"
numAdults="?" numChildren="?" numInfants="?">
          <!--Zero or more repetitions:-->
          <segmentRequests date="?" time="?" timeWindow="?">

```



```

    <!--Optional:-->
    <departure iataCode="LIS"/>
    <!--Optional:-->
    <destination iataCode="?" />
  </segmentRequests>
</itinerarySearchRequest>
</searchRequest>
</v1:search>
</soapenv:Body>
</soapenv:Envelope>

```

#6

```

<soapenv:Envelope xmlns:soapenv="http://schemas.xmlsoap.org/soap/envelope/"
xmlns:v1="http://b2b.odigeo.com/b2b/ws/v1">
  <soapenv:Header/>
  <soapenv:Body>
    <v1:createShoppingCart>
      <!--Optional:-->
      <credentials partnerId="?" password="?" />
      <!--Optional:-->
      <selectionRequest searchId="6673015246">
        <!--Optional:-->
        <itinerarySelection itineraryKey="?" segmentKeys="?" />
      </selectionRequest>
    </v1:createShoppingCart>
  </soapenv:Body>
</soapenv:Envelope>

```

#7

```

<soapenv:Envelope xmlns:soapenv="http://schemas.xmlsoap.org/soap/envelope/"
xmlns:v1="http://b2b.odigeo.com/b2b/ws/v1">
  <soapenv:Header/>
  <soapenv:Body>
    <v1:addPersonallInfoToShoppingCart>
      <!--Optional:-->
      <credentials partnerId="?" password="?" />
      <!--Optional:-->
      <personallInfo bookingId="428451819">
        <buyer name="?" lastNames="?" mail="?" identificationType="?" identification="?"
dateOfBirth="?" address="?" cityName="?" stateName="?" zipCode="?" countryCode="?">
          <!--Optional:-->
          <phoneNumber countryCode="?" number="?" />
          <!--Optional:-->

```

```

    <alternativePhoneNumber countryCode="?" number="?"/>
  </buyer>
  <!--1 or more repetitions:-->
  <travellerRequests dateOfBirth="?" identificationExpirationDate="?" travellerType="?"
titleName="?" name="?" firstLastName="?" secondLastName="?" middleName="?"
gender="?" nationalityCountryCode="?" countryCodeOfResidence="?" identification="?"
identificationType="?" identificationIssueCountryCode="?" numBags="?" mealName="?">
    <!--Zero or more repetitions:-->
    <frequentFlyerAirlineCodes carrierCode="?" passengerCardNumber="?"/>
  </travellerRequests>
</personalInfo>
</v1:addPersonalInfoToShoppingCart>
</soapenv:Body>
</soapenv:Envelope>

```

#8

```

<soapenv:Envelope xmlns:soapenv="http://schemas.xmlsoap.org/soap/envelope/"
xmlns:v1="http://b2b.odigeo.com/b2b/ws/v1">
  <soapenv:Header/>
  <soapenv:Body>
    <v1:confirmBooking>
      <!--Optional:-->
      <credentials partnerId="qa" password="prueba"/>
      <!--Optional:-->
      <bookingRequest collectionMethodType="PREPAY" bookingId="?"
partnerReferencId="?">
        <!--Optional:-->
        <prepayParametersRequest/>
        <!--Optional:-->
        <creditCardCollectionDetailsParametersRequest cardTypeCode="?" cardOwner="?"
cardNumber="?" cardSecurityNumber="?" cardExpirationMonth="?" cardExpirationYear="?"/>
      </bookingRequest>
      <bookingId>428451819</bookingId>
      <!--Optional:-->
      <partnerReferencId?</partnerReferencId>
    </v1:confirmBooking>
  </soapenv:Body>
</soapenv:Envelope>

```

#9

```

<soapenv:Envelope xmlns:soapenv="http://schemas.xmlsoap.org/soap/envelope/"
xmlns:v1="http://b2b.odigeo.com/b2b/ws/v1">
  <soapenv:Header/>
  <soapenv:Body>

```

```
<v1:getBookingById>
  <!--Optional:-->
  <credentials partnerId="?" password="?"/>
  <bookingId>428451819</bookingId>
</v1:getBookingById>
</soapenv:Body>
</soapenv:Envelope>
```

#10

```
<soapenv:Envelope xmlns:soapenv="http://schemas.xmlsoap.org/soap/envelope/"
xmlns:v1="http://b2b.odigeo.com/b2b/ws/v1">
  <soapenv:Header/>
  <soapenv:Body>
    <v1:getBookingByPartnerReference>
      <!--Optional:-->
      <credentials partnerId="?" password="?"/>
      <!--Optional:-->
      <partnerReferenceId>ctrip01</partnerReferenceId>
    </v1:getBookingByPartnerReference>
  </soapenv:Body>
</soapenv:Envelope>
```